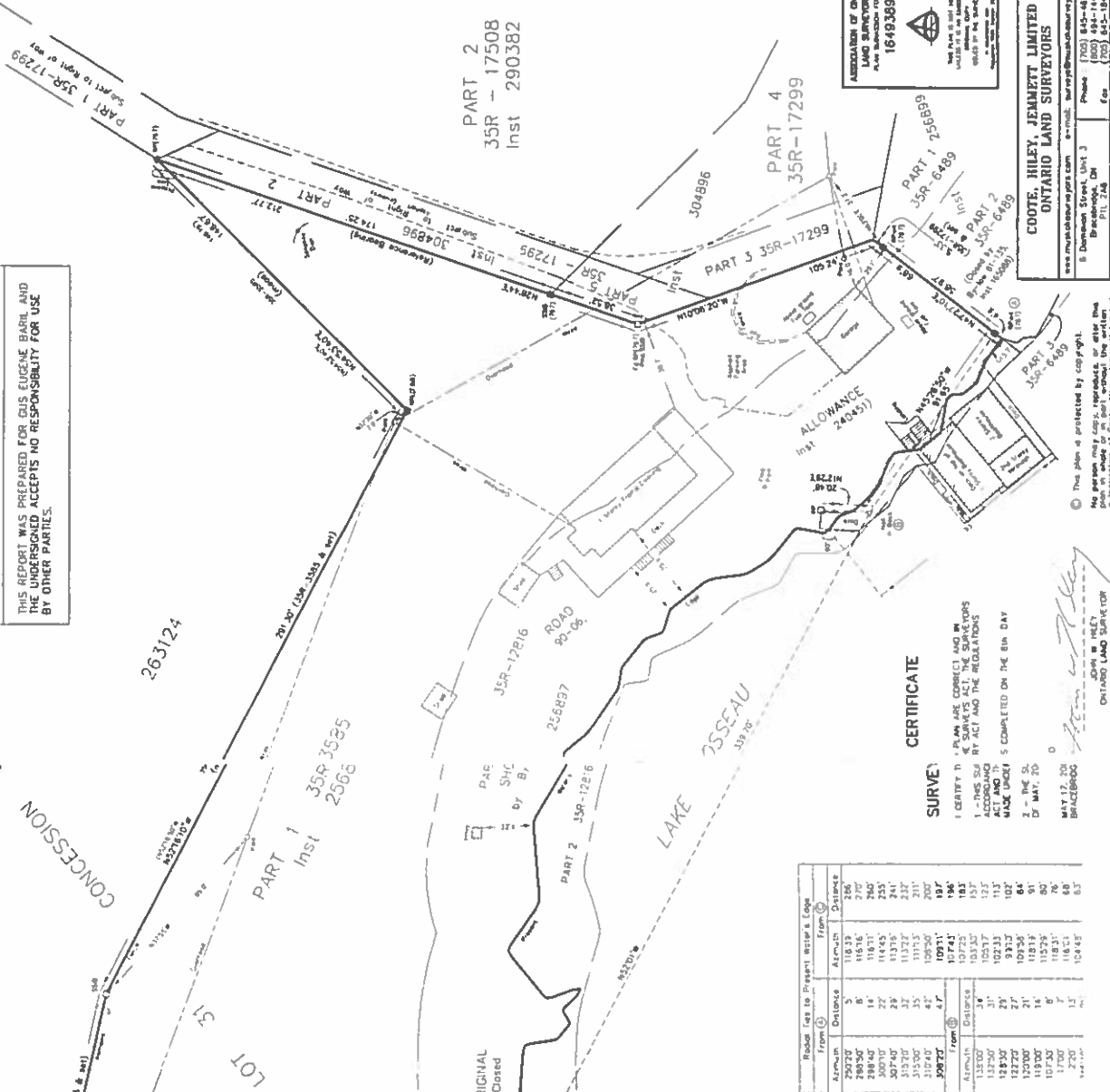


REVISION DATED MAY 17, 2007.

THIS REPORT WAS PREPARED FOR GUS EUGENE BARRI AND THE UNDERSIGNED ACCEPTS NO RESPONSIBILITY FOR USE BY OTHER PARTIES.



**SURVEYOR'S REAL PROPERTY REPORT (PART 1)**  
**PLAN OF SURVEY OF**  
**PART OF LOT 31, CONCESSION 3 and**  
**PART OF THE ORIGINAL SHORE ROAD**  
**ALLOWANCE IN FRONT THEREOF**  
 (Closed by By-law 90-06, Inst 240451)  
**GEOGRAPHIC TOWNSHIP OF WATT**  
**TOWN OF MUSKOKA LAKES**  
**DISTRICT MUNICIPALITY OF MUSKOKA**  
**COOTE, HILEY, JEMMETT LIMITED**

SCALE 1" = 30'



DISTANCES SHOWN ON THIS PLAN ARE IN FEET AND CAN BE CONVERTED TO METRES BY MULTIPLYING BY 0.3048

- LEGEND**
- BEARINGS ARE ASTROLOGIC AND ARE REFERRED TO THE WESTERN LIMIT OF PART 2 AS SHOWN ON PLAN 35R-17299 HAVING A BEARING OF N42°00'.
  - ALL BUILDING LINES SHOWN HEREON ARE TO THE FACE OF THE SIDING UNLESS OTHERWISE NOTED.
  - MONUMENT PLANTED
  - MONUMENT FOUND
  - MONUMENT REMOVED
  - IRON BAR
  - ROUND IRON BAR
  - WOOD PILE
  - WOOD POST
  - M.W. FITZPATRICK D.L.S.

Road (as to Present Water Edge)			
From (1)	To (2)	From (3)	To (4)
290207	5	116133	286
290207	8	116136	270
290207	14	116131	255
290207	29	116135	241
290207	37	116132	232
290207	35	116135	211
290207	35	116135	211
290207	47	116131	197
290207	47	116131	196
132000		116133	183
132000	14	116130	157
132000	31	116131	113
132000	29	116132	113
132000	21	116133	107
132000	14	116134	91
132000	17	116135	76
132000	17	116135	68
132000	17	116135	67
132000	17	116135	67

**CERTIFICATE**

PLAN AS SHOWN AND IN SURVEYOR'S ACT AND THE REGULATIONS MADE UNDER 5 COMPLETED ON THE 8th DAY OF MAY, 2007.

JOHN W. HILEY  
 ONTARIO LAND SURVEYOR

This plan is protected by copyright. No person may copy, reproduce or alter the contents hereof without the written consent of Coote, Hiley, Jemmett Limited.

**ASSOCIATION OF ONTARIO LAND SURVEYORS**  
 PLAN REGISTRATION DIVISION  
 1649389

**COOTE, HILEY, JEMMETT LIMITED**  
**ONTARIO LAND SURVEYORS**

www.cootehileyjemmett.com e-mail: survey@cootehileyjemmett.com  
 6 Devonport Street, Unit 3, Bracebridge, ON P1L 2A8  
 Phone: (705) 845-4811 Fax: (705) 845-1443  
 Toll Free: (800) 494-1443 Fax: (705) 845-1845

Drawn by: M.C. Date: 07/06