

5736

PLAN 35R-5736

RECEIVED AND DEPOSITED

DATE - 29 MAY 1978

Maurice W. Fitzmaurice
DEPUTY
LAND TITLES DIVISION OF SASKATCHEWAN

APPROVED - MAY 29 1978

ASSISTANT EXAMINER OF SURVEYS

PART 1, PART OF PARCEL 17770
PART 2, PART OF PARCEL 22940
PART 3, PART OF PARCEL 17772
PART 4, PART OF PARCEL 17773
PART 5, PART OF PARCEL 17771
PART 6, PART OF PARCEL 14214, SUBJECT
TO RIGHT-OF-WAY APPURTENANT TO
PARCELS 14215, 14300, 14326, 14328, 14329, 14346

MPS - 6984
2-A-3

I REQUIRE THIS PLAN TO BE DEPOSITED UNDER THE LAND TITLES ACT

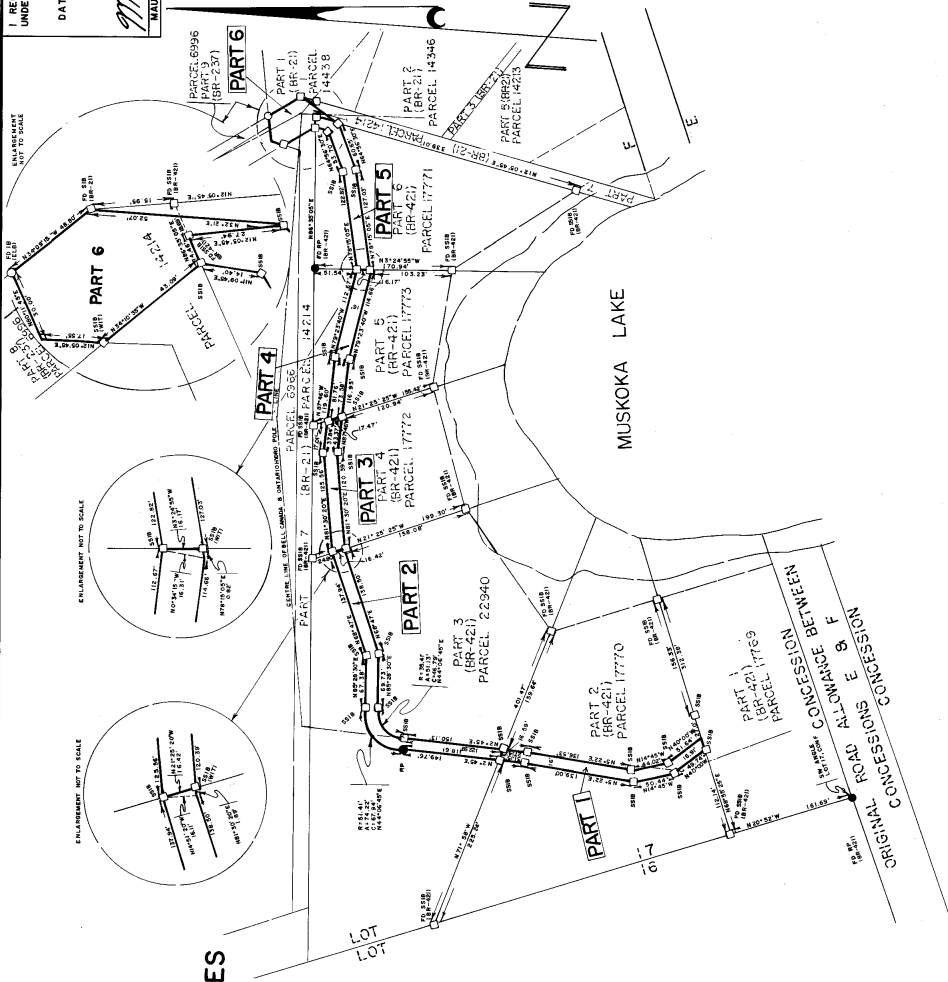
DATE - MAY 11, 1978

Maurice W. Fitzmaurice
MAURICE W. FITZMAURICE OLS

NOTES

- DISTANCES ARE IN FEET AND DECIMALS THEREOF
- ALL HANDING LINES HAVE BEEN VERIFIED
- BEARINGS ARE ASTROMONOMIC AND DERIVED FROM THE NORTH LIMIT OF PART 6, (BR-421), WHICH HAS AN ASSUMED BEARING OF N86°35'05"E AS SHOWN ON SMD PLAN
- SIB - DENOTES STANDARD IRON BAR (1" x 1/4" x 48")
- SSI B - II SHORT STANDARD IRON BAR (1" x 1/4" x 24")
- R.P. - II ROCK POST (1 1/8" Ø with cap and bolt)

MAURICE W. FITZMAURICE LTD.
ON-THE-SPOT LAND SURVEYOR
BRACEBRIDGE, ONTARIO
FILE - 12537



PLAN MATERIAL
DESCRIPTION
SCALE - 1" = 100'
MAURICE W. FITZMAURICE OLS 1978

PLAN AND FIELD NOTES OF SURVEY OF
PART OF LOT 17, CONCESSION F
TOWNSHIP OF MEDORA (NOW IN THE)
TOWNSHIP OF MUSKOKA LAKES
DISTRICT MUNICIPALITY OF MUSKOKA
SCALE 1" = 100'
MAURICE W. FITZMAURICE OLS 1978

SURVEYOR'S CERTIFICATE

- I HEREBY CERTIFY THAT THIS SURVEY AND PLAN ARE CORRECT AND IN ACCORDANCE WITH THE SURVEYS ACT AND THE LAND TITLES ACT AND THE REGULATIONS MADE THEREUNDER
- I WAS PRESENT AT AND DID PERSONALLY SUPERVISE THE SURVEY REPRESENTED BY THIS PLAN
- THIS PLAN CONTAINS A TRUE COPY OF THE FIELD NOTES OF SURVEY
- THE SURVEY WAS COMPLETED ON THE 3rd DAY OF MAY 1978

Maurice W. Fitzmaurice
MAURICE W. FITZMAURICE OLS

MAY 11, 1978