

I REQUIRE THIS PLAN TO BE DEPOSITED UNDER THE REGISTRY ACT.  
 DATE: MAY 16, 2006  
 JOHN W. HILEY O.L.S.

**PLAN 35R-11248**  
 RECEIVED AND DEPOSITED  
 DATE: MAY 30, 2006  
*Mary Christie*  
 ASST DEPUTY LAND REGISTRAR FOR THE REGISTRY DIVISION OF MUSKOKA

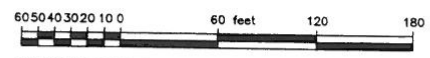
WHEN IMPRINTED IN RED INK THIS COPY IS AN OFFICE COPY AND MUST NOT BE REMOVED FROM REGISTRY OFFICE FILES

SCHEDULE			
PART	LOCATION	INST	AREA
1		Part of 286864 & Part of 286865	2.05 acres
2	Part of Beacon Island in Lake Rosseau	Part of 286864 & Part of 286865	2.42 acres
3		Part of 286864 & Part of 286865	2.40 acres

NOTE: Parts 1, 2 & 3 comprise all of Insts 286864 & 286865

**PLAN OF SURVEY OF PART OF BEACON ISLAND IN LAKE ROSSEAU**  
 GEOGRAPHIC TOWNSHIP OF MEDORA  
 TOWNSHIP OF MUSKOKA LAKES  
 DISTRICT MUNICIPALITY OF MUSKOKA  
 COOTE, HILEY, JEMMETT LIMITED

SCALE 1" = 60'



DISTANCES SHOWN ON THIS PLAN ARE IN FEET AND CAN BE CONVERTED TO METRES BY MULTIPLYING BY 0.3048.

**LEGEND**

BEARINGS ARE ASTRONOMIC AND ARE REFERRED TO THE EASTERLY LIMIT OF PART 3 AS SHOWN ON PLAN 35R-13903 HAVING A BEARING OF N35°15'10"E.

- ..... MONUMENT PLANTED
- ..... MONUMENT FOUND
- SSIB ..... SHORT STANDARD IRON BAR
- IR ..... IRON BAR
- RP ..... ROCK POST
- C&J ..... COOTE, HILEY, JEMMETT LIMITED
- F&B ..... FITZMAURICE & BOYER O.L.S.

**SURVEYOR'S CERTIFICATE**

I CERTIFY THAT:  
 1 - THIS SURVEY AND PLAN ARE CORRECT AND IN ACCORDANCE WITH THE SURVEYS ACT, THE SURVEYORS ACT AND THE REGISTRY ACT AND THE REGULATIONS MADE UNDER THEM.  
 2 - THE SURVEY WAS COMPLETED ON THE 3rd. DAY OF MAY, 2006.

MAY 16, 2006  
 BRACEBRIDGE, ONTARIO

*John W. Hiley*  
 JOHN W. HILEY  
 ONTARIO LAND SURVEYOR

Radial Ties to Water's Edge			
From (A)		From (B)	
Azimuth	Distance	Azimuth	Distance
155° 27'	45'	113° 54'	66'
238° 42'	18'	118° 50'	21'
215° 15'	15'	176° 00'	14'
247° 36'	15'	232° 45'	7'
275° 30'	25'	296° 00'	15'
286° 22'	63'	317° 30'	24'
289° 00'	83'	319° 10'	59'
		316° 23'	76'
		318° 10'	89'

Radial Ties to Water's Edge			
From (C)		From (D)	
Azimuth	Distance	Azimuth	Distance
98° 48'	204'	193° 48'	671'
89° 57'	194'	192° 48'	660'
85° 20'	195'	192° 21'	639'
79° 30'	207'	190° 05'	621'
		187° 57'	608'
		183° 10'	587'
		180° 06'	585'
		176° 46'	584'
		174° 31'	585'
		173° 03'	588'
		166° 42'	598'
		161° 58'	605'
		157° 13'	608'
		152° 12'	619'
		149° 49'	630'
		147° 54'	651'
		146° 34'	663'
		145° 13'	672'
		143° 38'	700'
		141° 40'	719'

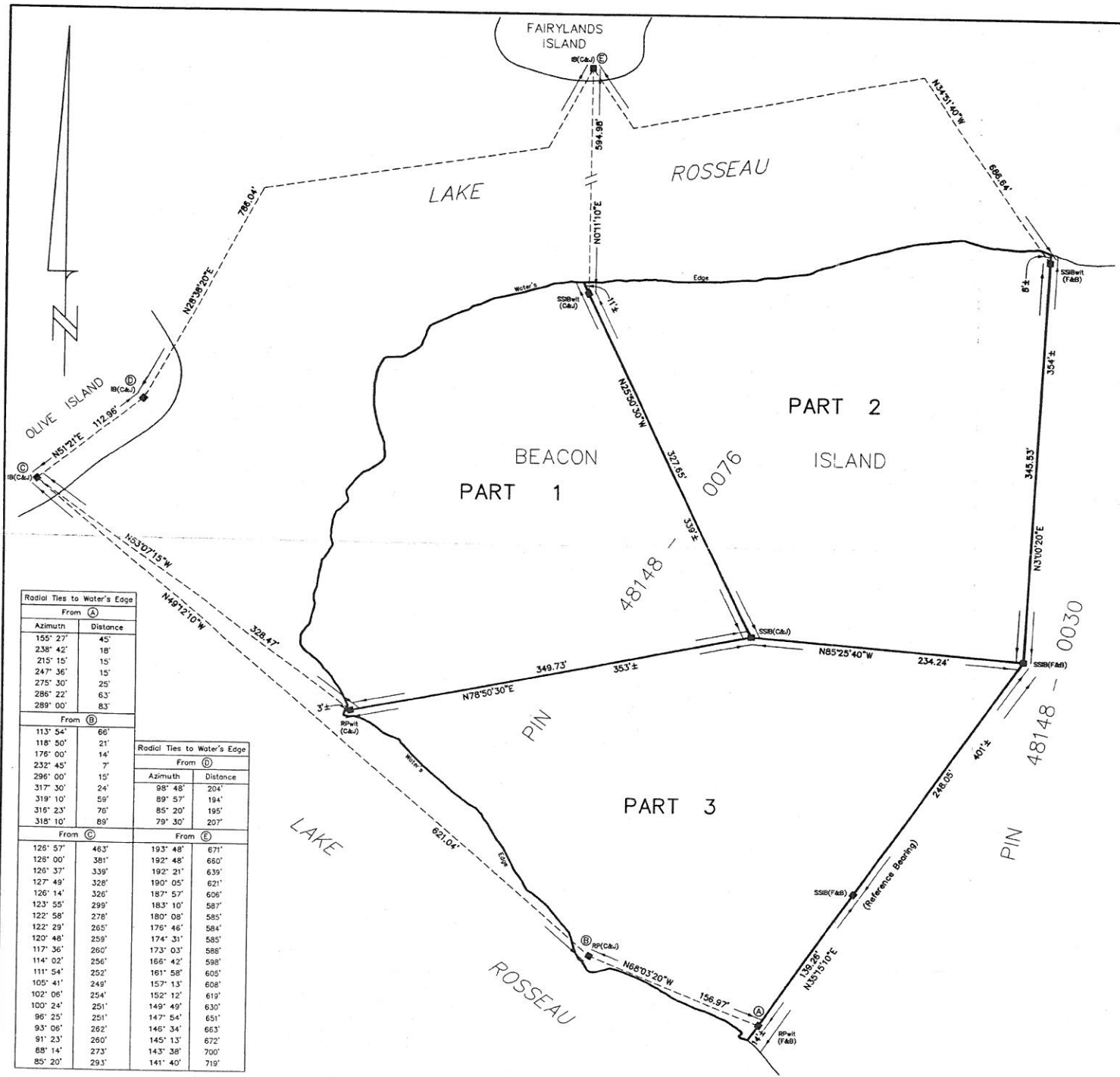
**COOTE, HILEY, JEMMETT LIMITED**  
 ONTARIO LAND SURVEYORS

www.muskokasurveyors.com e-mail: surveys@muskokasurveyors.com

6 Dominion Street, Unit 3  
 Bracebridge, ON P1L 2A6

Phone : (705) 645-4611  
 (800) 494-1443  
 Fax : (705) 645-1845

Drawn by: M.G. File: 21176 Plan: 35R-



I REQUIRE THIS PLAN TO BE DEPOSITED UNDER THE LAND TITLES ACT.  
 DATE: NOVEMBER 8, 2006  
*John W. Hiley*  
 JOHN W. HILEY O.L.S.

**PLAN 35R-21504**

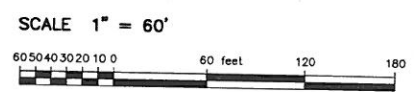
RECEIVED AND DEPOSITED  
 DATE: 29 November 2006  
*[Signature]*

DEPICTY LAND/REGISTRAR FOR THE LAND TITLES DIVISION OF MUSKOKA

WHEN IMPRINTED IN RED INK THIS COPY IS AN OFFICE COPY AND MUST NOT BE REMOVED FROM REGISTRY OFFICE FILES

SCHEDULE			
PART	LOCATION	PIN	AREA
1	Part of Beacon Island	All of 48148-0076	2.05 acres
2	Beacon Island in Lake Rosseau		2.42 acres
3			2.40 acres

PLAN OF SURVEY OF ALL MINES, ORES, MINERALS AND MINING RIGHTS IN, UPON AND UNDER PART OF BEACON ISLAND IN LAKE ROSSEAU GEOGRAPHIC TOWNSHIP OF MEDORA TOWNSHIP OF MUSKOKA LAKES DISTRICT MUNICIPALITY OF MUSKOKA COOTE, HILEY, JEMMETT LIMITED



DISTANCES SHOWN ON THIS PLAN ARE IN FEET AND CAN BE CONVERTED TO METRES BY MULTIPLYING BY 0.3048.

**LEGEND**  
 BEARINGS ARE ASTRONOMIC AND ARE REFERRED TO THE EASTERLY LIMIT OF PART 3 AS SHOWN ON PLAN 35R-21248 HAVING A BEARING OF N35°15'10"E.

- ..... MONUMENT PLANTED
- ..... MONUMENT FOUND
- SSIB ..... SHORT STANDARD IRON BAR
- IB ..... IRON BAR
- RP ..... ROCK POST
- C&J ..... COOTE, HILEY, JEMMETT LIMITED
- F&B ..... FITZMAURICE & BOYER O.L.S.

**SURVEYOR'S CERTIFICATE**  
 I CERTIFY THAT:  
 1 - THIS SURVEY AND PLAN ARE CORRECT AND IN ACCORDANCE WITH THE SURVEYS ACT, THE SURVEYORS ACT AND THE LAND TITLES ACT AND THE REGULATIONS MADE UNDER THEM.  
 2 - THE SURVEY WAS COMPLETED ON THE 3rd. DAY OF MAY, 2006.

NOVEMBER 8, 2006  
 BRACEBRIDGE, ONTARIO  
*John W. Hiley*  
 JOHN W. HILEY  
 ONTARIO LAND SURVEYOR

**COOTE, HILEY, JEMMETT LIMITED**  
 ONTARIO LAND SURVEYORS

www.muskokasurveyors.com e-mail: surveys@muskokasurveyors.com  
 6 Dominion Street, Unit 3 Phone: (705) 645-4611  
 Bracebridge, ON (800) 494-1443  
 P1L 2A6 Fax: (705) 645-1845

Drawn by: M.G. File: 21176 Plan: 35R-

Radial Ties to Water's Edge		From (A)	
Azimuth	Distance	Azimuth	Distance
155° 27'	45'		
238° 42'	18'		
215° 15'	15'		
247° 36'	15'		
275° 30'	25'		
286° 22'	63'		
289° 00'	83'		

From (B)		Radial Ties to Water's Edge	
Azimuth	Distance	Azimuth	Distance
113° 54'	66'		
118° 50'	21'		
176° 00'	14'		
232° 45'	7'		
296° 00'	15'		
317° 30'	24'		
319° 10'	59'		
316° 23'	76'		
318° 10'	89'		

From (C)		From (D)	
Azimuth	Distance	Azimuth	Distance
126° 57'	463'	193° 48'	671'
126° 00'	381'	192° 48'	660'
126° 37'	339'	192° 21'	639'
127° 49'	328'	190° 05'	621'
126° 14'	326'	187° 57'	606'
123° 55'	299'	183° 10'	587'
122° 58'	278'	180° 08'	585'
122° 29'	265'	176° 46'	584'
120° 48'	259'	174° 31'	585'
117° 36'	260'	173° 03'	588'
114° 02'	256'	166° 42'	598'
111° 54'	252'	161° 58'	605'
105° 41'	249'	157° 13'	608'
102° 06'	254'	152° 12'	619'
100° 24'	251'	149° 49'	630'
96° 25'	251'	147° 54'	651'
93° 06'	262'	146° 34'	663'
91° 23'	260'	145° 13'	672'
89° 14'	273'	143° 38'	700'
85° 20'	293'	141° 40'	719'