

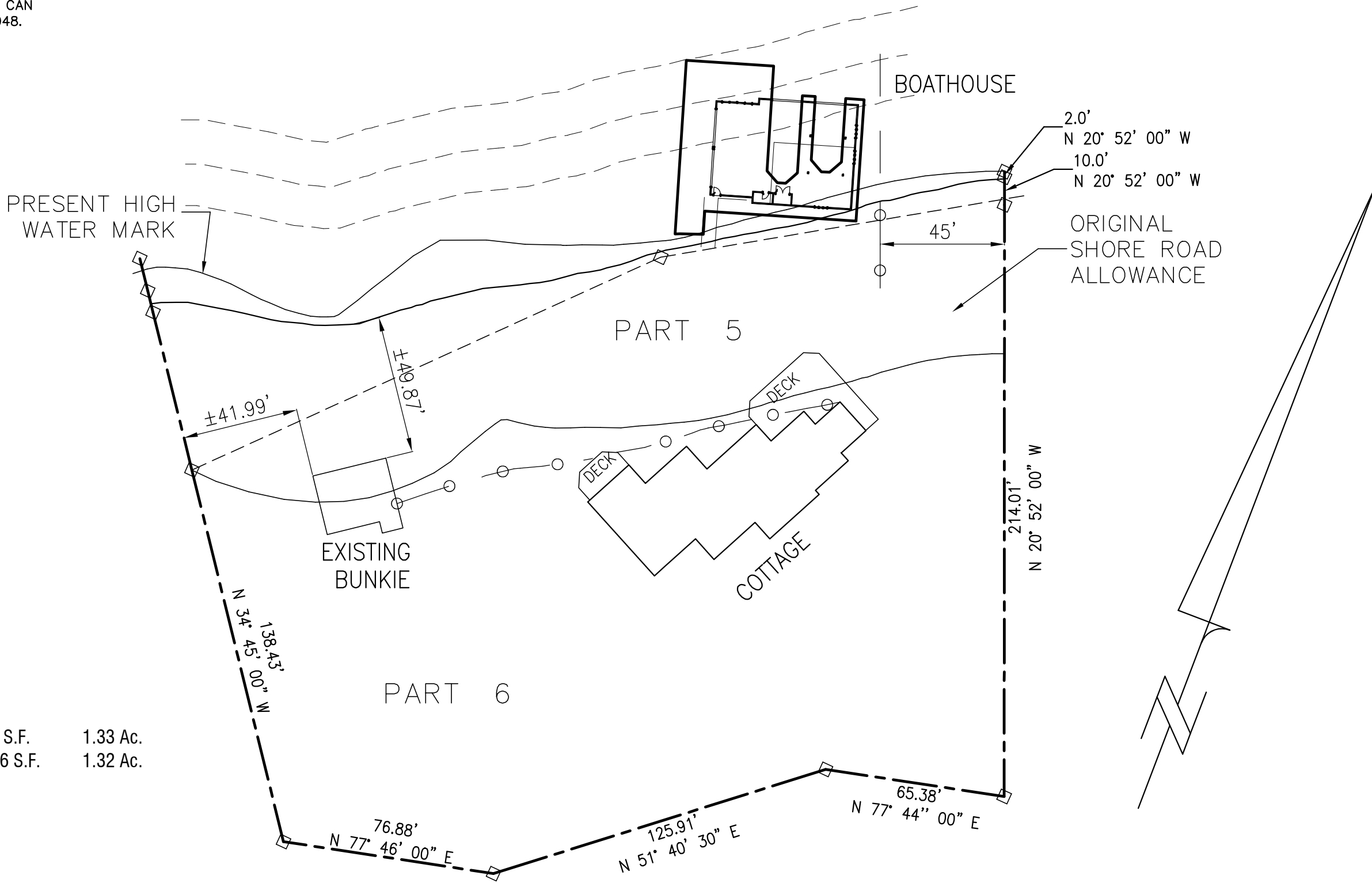
GEOGRAPHIC TOWNSHIP OF WATT TOWNSHIP OF MUSKOKA LAKES

SCALE 1" = 40'



DISTANCES SHOWN ON THIS PLAN ARE IN FEET AND CAN BE CONVERTED TO METRES BY MULTIPLYING BY 0.3048.

LAKE ROSSEAU



AREA ANALYSIS

TOTAL SITE AREA:	58006.29 S.F.	1.33 Ac.
LOT AREA WITHIN 200' OF SHORE	57334.46 S.F.	1.32 Ac.

1051 Montgomery Road Unit #4