

**PLAN 35R-24136**

I REQUIRE THIS PLAN TO BE DEPOSITED UNDER THE LAND TITLES ACT.

DATE: MARCH 8, 2013

RECEIVED AND DEPOSITED

DATE: *March 25 2013*

*[Signature]*  
DOUGLAS W. JEMMETT, O.L.S.

REPRESENTATIVE FOR THE LAND REGISTRAR FOR THE LAND TITLES DIVISION OF MUSKOKA

PART	LOT	CON.	PIN	AREA
1	Part of 34	13	All of 48159-0005(LT)	2532 m <sup>2</sup>
2	Part of the Original Shore Road Allowance in front of Lot 34,		No PIN	1658 m <sup>2</sup>
3	Concession 13			231 m <sup>2</sup>

**PLAN OF SURVEY OF PART OF LOT 34, CONCESSION 13 and PART OF THE ORIGINAL SHORE ROAD ALLOWANCE IN FRONT THEREOF GEOGRAPHIC TOWNSHIP OF MONCK TOWNSHIP OF MUSKOKA LAKES DISTRICT MUNICIPALITY OF MUSKOKA COOTE, HILEY, JEMMETT LIMITED**

SCALE 1 : 300



DISTANCES AND COORDINATES SHOWN ON THIS PLAN ARE IN METRES AND CAN BE CONVERTED TO FEET BY DIVIDING BY 0.3048.

**LEGEND**

- MONUMENT PLANTED
- MONUMENT FOUND
- ▣ STANDARD IRON BAR
- SSIB SHORT STANDARD IRON BAR
- IB IRON BAR
- RP ROCK POST
- RPL ROCK PLUG
- R11 N.P. LYNDON O.L.S.
- R12 D.B. CHAPPEL O.L.S.
- C&J COOTE, HILEY, JEMMETT LIMITED
- CGVD28 CANADIAN GEODETIC VERTICAL DATUM 1928 (PRE-1978 ADJUSTMENT)
- MTO MINISTRY OF TRANSPORTATION ONTARIO
- wit WITNESS

BEARINGS ARE UTM GRID DERIVED FROM SIMULTANEOUS GPS OBSERVATIONS (RTK) ON MONUMENTS (A) AND (B) AS SHOWN HEREON, HAVING A GRID BEARING OF N71°09'30"W, NAD83 (CSRS) (1997.0) AND ARE REFERRED TO THE CENTRAL MERIDIAN OF UTM ZONE 17 (81° W longitude).

DISTANCES ON THIS PLAN ARE HORIZONTAL GROUND DISTANCES AND CAN BE CONVERTED TO GRID DISTANCES BY MULTIPLYING BY THE AVERAGE COMBINED SCALE FACTOR OF 0.999732909.

FOR BEARING COMPARISONS, A COUNTERCLOCKWISE ROTATION OF 0°57'20" WAS APPLIED TO PLANS BR-840 & BR-1373 TO CONVERT TO UTM BEARINGS.

**SURVEYOR'S CERTIFICATE**

I CERTIFY THAT:

1 - THIS SURVEY AND PLAN ARE CORRECT AND IN ACCORDANCE WITH THE SURVEYS ACT, THE SURVEYORS ACT AND THE LAND TITLES ACT AND THE REGULATIONS MADE UNDER THEM.

2 - THE SURVEY WAS COMPLETED ON THE 3rd. DAY OF JANUARY, 2013.

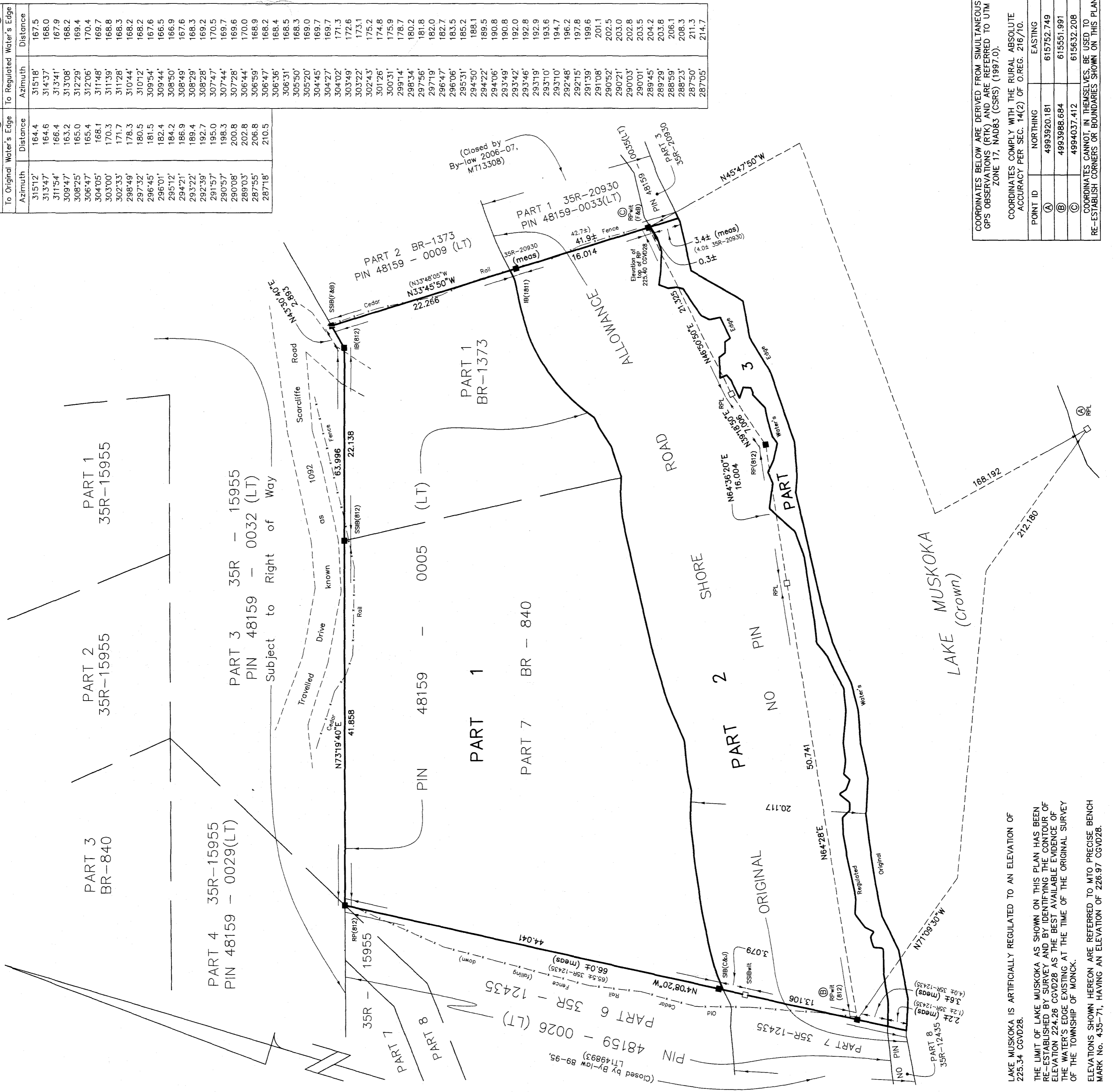
MARCH 8, 2013  
BRACEBRIDGE, ONTARIO

*[Signature]*  
DOUGLAS W. JEMMETT  
ONTARIO LAND SURVEYOR

**COOTE, HILEY, JEMMETT LIMITED**  
ONTARIO LAND SURVEYORS

Website: <a href="http://www.muskokasurveyors.com">www.muskokasurveyors.com</a>	Phone: 705-645-4611
E-mail: <a href="mailto:surveyors@muskokasurveyors.com">surveyors@muskokasurveyors.com</a>	800-494-1443
127 Keith Road Bracebridge, Ontario P1L 0A1	Fax: 705-645-1845
Drawn by: jg	File: 23240
Archived Survey Plans: <a href="http://www.landssurveyrecords.com">www.landssurveyrecords.com</a>	

Radial Ties from (A)		Radial Ties from (B)	
To Original Water's Edge	Distance	To Regulated Water's Edge	Distance
31512'	164.4	31518'	167.5
31437'	164.6	31437'	168.0
31154'	166.4	31341'	167.9
30947'	163.2	31308'	168.2
30825'	165.0	31229'	169.4
30647'	165.4	31206'	170.4
30405'	168.1	31148'	169.7
30300'	170.3	31139'	168.8
30233'	171.7	31128'	168.3
29849'	178.3	31044'	168.2
29732'	180.5	31012'	168.2
29645'	181.5	30954'	167.6
29501'	182.4	30944'	166.5
29512'	184.2	30850'	166.9
29421'	186.9	30849'	167.6
29322'	189.4	30829'	168.3
29259'	192.7	30828'	169.2
29157'	195.0	30747'	170.5
29057'	198.3	30744'	169.7
29008'	200.8	30728'	169.6
28903'	202.8	30644'	170.0
28755'	206.8	30659'	168.9
28718'	210.5	30647'	168.2
		30636'	168.4
		30631'	168.5
		30550'	168.3
		30520'	169.0
		30445'	169.7
		30427'	169.7
		30422'	171.3
		30349'	172.6
		30322'	173.1
		30243'	175.2
		30126'	174.8
		30031'	175.9
		29914'	178.7
		29834'	180.2
		29756'	181.8
		29719'	182.0
		29647'	182.7
		29606'	183.5
		29531'	185.2
		29450'	188.1
		29422'	189.5
		29406'	190.8
		29349'	190.8
		29342'	192.0
		29346'	192.8
		29319'	192.9
		29310'	193.6
		29310'	194.7
		29248'	196.2
		29215'	197.8
		29139'	199.6
		29108'	201.1
		29052'	202.5
		29021'	203.0
		29003'	202.8
		29001'	203.5
		28945'	204.2
		28929'	203.8
		28859'	206.1
		28823'	208.3
		28750'	211.3
		28705'	214.7



COORDINATES BELOW ARE DERIVED FROM SIMULTANEOUS GPS OBSERVATIONS (RTK) AND ARE REFERRED TO UTM ZONE 17, NAD83 (CSRS) (1997.0).

COORDINATES COMPLY WITH THE RURAL ABSOLUTE ACCURACY PER SEC. 14(2) OF O.REG. 216/10.

POINT ID	NORTHING	EASTING
(A)	4993920.181	615752.749
(B)	4993988.684	615551.991
(C)	4994037.412	615632.208

COORDINATES CANNOT, IN THEMSELVES, BE USED TO RE-ESTABLISH CORNERS OR BOUNDARIES SHOWN ON THIS PLAN.

LAKE MUSKOKA IS ARTIFICIALLY REGULATED TO AN ELEVATION OF 225.34 CGVD28.

THE LIMIT OF LAKE MUSKOKA AS SHOWN ON THIS PLAN HAS BEEN RE-ESTABLISHED BY SURVEY AND BY IDENTIFYING THE CONTOUR OF ELEVATION 224.26 CGVD28 AS THE BEST AVAILABLE EVIDENCE OF THE WATER'S EDGE EXISTING AT THE TIME OF THE ORIGINAL SURVEY OF THE TOWNSHIP OF MONCK.

ELEVATIONS SHOWN HEREON ARE REFERRED TO MTO PRECISE BENCH MARK No. 435-71, HAVING AN ELEVATION OF 226.97 CGVD28.