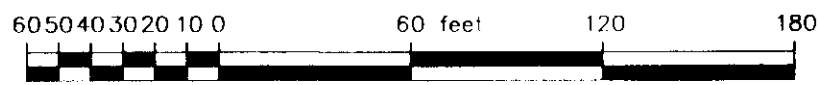


PLAN OF SURVEY OF
 PART OF THE ORIGINAL SHORE ROAD ALLOWANCE
 IN FRONT OF LOT 10, CONCESSION 12
 (Closed by By-law 88-140, Registered as Inst. 226949)
 GEOGRAPHIC TOWNSHIP OF MUSKOKA
 TOWN OF BRACEBRIDGE
 DISTRICT MUNICIPALITY OF MUSKOKA
 COOTE, HILEY, JEMMETT LIMITED

SCALE 1" = 60'



DISTANCES SHOWN ON THIS PLAN ARE IN FEET AND CAN BE CONVERTED TO METRES BY MULTIPLYING BY 0.3048.

LEGEND

BEARINGS ARE ASTRONOMIC AND ARE REFERRED TO THE SOUTHWESTERLY LIMIT OF PART 3 AS SHOWN ON PLAN 35R-14721 HAVING A BEARING OF N65°22'10"W.

- MONUMENT PLANTED
- MONUMENT FOUND
- SIB STANDARD IRON BAR
- SSIB SHORT STANDARD IRON BAR
- IB IRON BAR
- RP ROCK POST
- 812 N.P. LYNDON O.L.S.
- C&J COOTE, HILEY, JEMMETT LIMITED
- GSC GEODETIC SURVEY OF CANADA
- MTO MINISTRY OF TRANSPORTATION ONTARIO

RADIAL TIES FROM (A)			
To Present Water's Edge		To Original Water's Edge	
Azimuth	Distance	Azimuth	Distance
345° 33'	64'	215° 30'	66.3'
186° 58'	106'	213° 54'	598'
183° 24'	289'	213° 38'	558'
192° 30'	334'	210° 58'	480'
200° 06'	390'	206° 39'	419'
202° 51'	428'	201° 57'	376'
205° 13'	447'	198° 29'	350'
208° 12'	472'	197° 20'	284'
209° 32'	499'	202° 28'	219'
211° 21'	537'	221° 48'	138'
		304° 13'	111'

I REQUIRE THIS PLAN TO BE DEPOSITED UNDER THE REGISTRY ACT.

DATE: DECEMBER 18, 2002

John W. Hiley
 JOHN W. HILEY O.L.S.

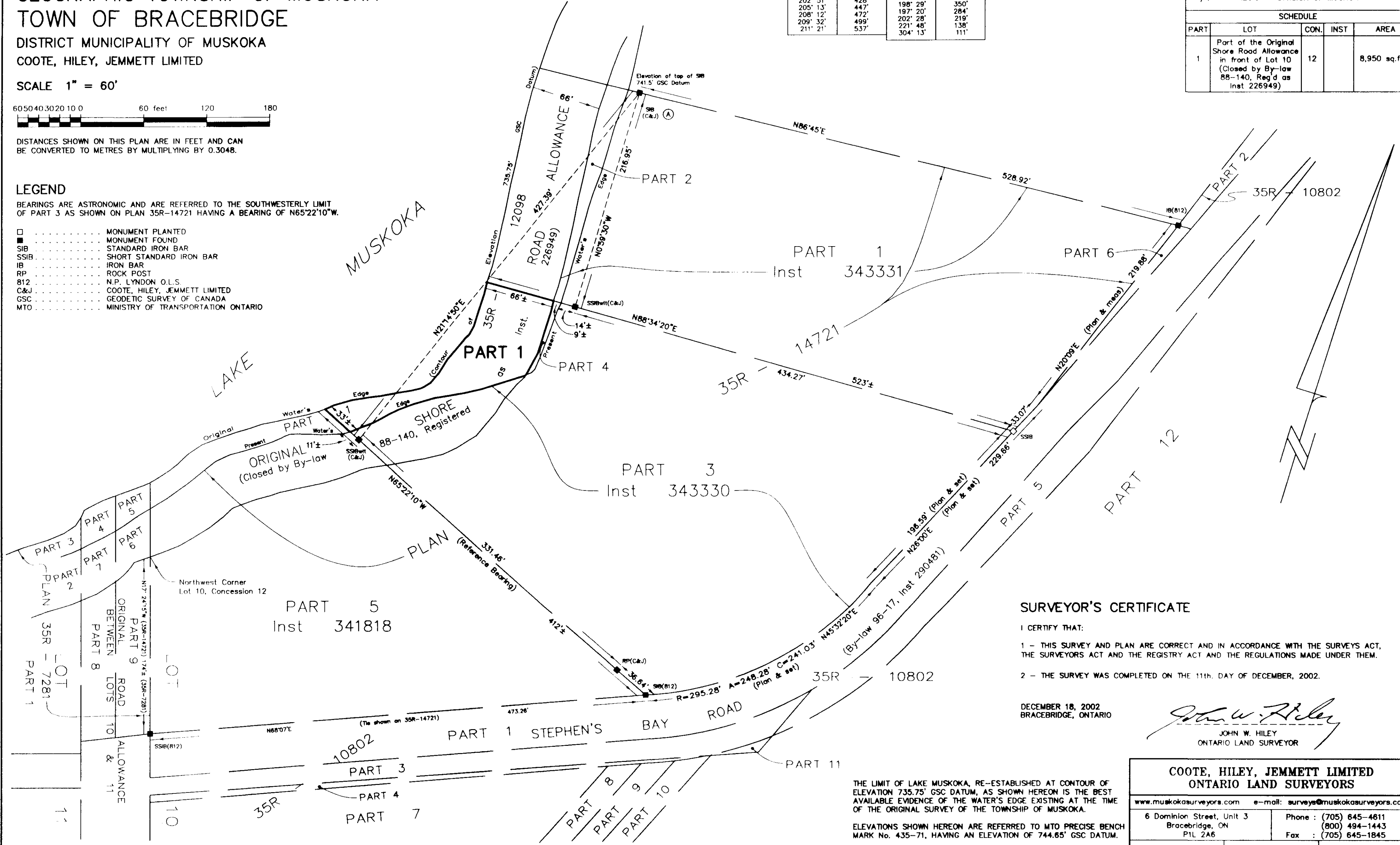
PLAN 35R-19706

RECEIVED AND DEPOSITED

DATE: JANUARY 10, 2003

Mary C. Christie
 ASST. DEPUTY LAND REGISTRAR FOR THE
 REGISTRY DIVISION OF MUSKOKA

SCHEDULE				
PART	LOT	CON.	INST	AREA
1	Part of the Original Shore Road Allowance in front of Lot 10 (Closed by By-law 88-140, Reg'd as Inst 226949)	12		8,950 sq. ft. ±



SURVEYOR'S CERTIFICATE

I CERTIFY THAT:

- THIS SURVEY AND PLAN ARE CORRECT AND IN ACCORDANCE WITH THE SURVEYS ACT, THE SURVEYORS ACT AND THE REGISTRY ACT AND THE REGULATIONS MADE UNDER THEM.
- THE SURVEY WAS COMPLETED ON THE 11th. DAY OF DECEMBER, 2002.

DECEMBER 18, 2002
 BRACEBRIDGE, ONTARIO

John W. Hiley
 JOHN W. HILEY
 ONTARIO LAND SURVEYOR

THE LIMIT OF LAKE MUSKOKA, RE-ESTABLISHED AT CONTOUR OF ELEVATION 735.75' GSC DATUM, AS SHOWN HEREON IS THE BEST AVAILABLE EVIDENCE OF THE WATER'S EDGE EXISTING AT THE TIME OF THE ORIGINAL SURVEY OF THE TOWNSHIP OF MUSKOKA.

ELEVATIONS SHOWN HEREON ARE REFERRED TO MTO PRECISE BENCH MARK No. 435-71, HAVING AN ELEVATION OF 744.65' GSC DATUM.

COOTE, HILEY, JEMMETT LIMITED
 ONTARIO LAND SURVEYORS

www.muskokasurveyors.com e-mail: surveys@muskokasurveyors.com

6 Dominion Street, Unit 3
 Bracebridge, ON
 P1L 2A6

Phone : (705) 645-4611
 (800) 494-1443
 Fax : (705) 645-1845

Drawn by: M.G. File: 20647 Plan: 35R-

19706