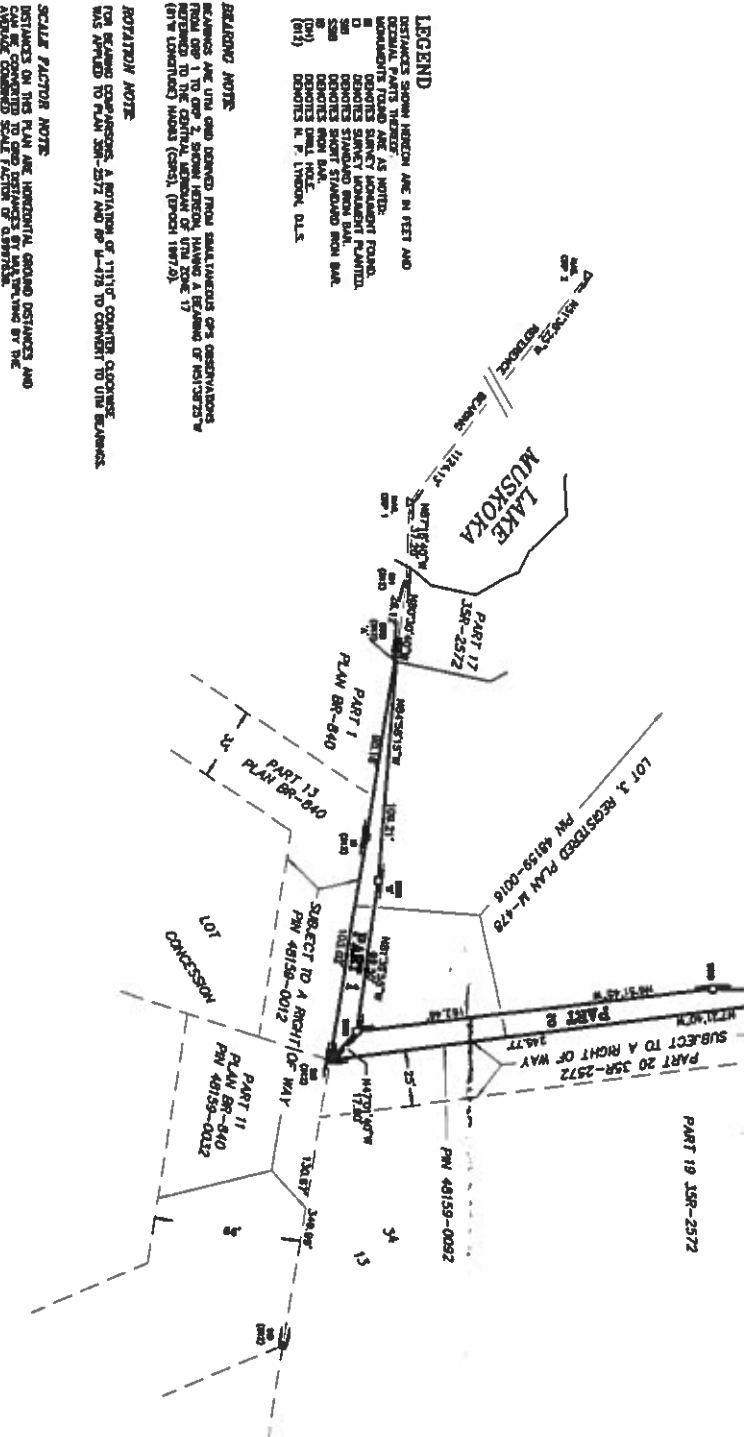


IMPORTANT
 DISTANCES AND COORDINATES SHOWN ON THIS PLAN ARE IN FEET AND CAN BE CONVERTED TO METRES BY MULTIPLYING BY 0.3048.

COORDINATES ARE DERIVED FROM QUADRANTAL STARS OF OBSERVATIONS AND ARE REFERRED TO THE CENTRAL MERIDIAN OF THE ZONE 17N, HORIZONTAL DATUM OF 1983, NORTH AMERICAN DATUM OF 1983 (NAD 83). LOCAL CORRECTIONS TO THE NATIONAL DATUM OF 1983 (NAD 83) HAVE BEEN APPLIED TO THE COORDINATE VALUES AND TO BEAL, ACCORDANCE WITH SECTION 14 (2) OF CAPS 219/70.

COORDINATES CANNOT, IN THEMSELVES, BE USED TO RE-ESTABLISH CORNERS OR BOUNDARIES ON THIS PLAN.



LEGEND
 DISTANCES SHOWN HEREON ARE IN FEET AND DECIMAL PARTS THEREOF.
 BOUNDARY TOWNS ARE AS NOTED.
 CONVEYED SURVEY MONUMENT PLANTS:
 S.M. DENOTES SURVEY MONUMENT PLANT.
 S.S.M. DENOTES SHORT STANDARD IRON BAR.
 S.P. DENOTES SPERM CAN.
 S.P. DENOTES S.P. LINDEN, O.L.S.
 (S.P.) DENOTES S.P. LINDEN, O.L.S.

BEARING NOTE
 BEARINGS ARE TRUE AND DERIVED FROM QUADRANTAL STARS OF OBSERVATIONS REFERRED TO THE CENTRAL MERIDIAN OF THE ZONE 17N (19N LOMBURD) MAGN. (GEOID 1987.0).

ROTATION NOTE
 THE BEARING SPECIFICATIONS, A ROTATION OF 1/16TH CIRCLE, COUNTERCLOCKWISE WAS APPLIED TO PLAN BR-2572 AND P-1-17S TO CORRECT TO THE BEARINGS.

SCALE FACTOR NOTE
 DISTANCES ON THIS PLAN ARE HORIZONTAL GROUND DISTANCES AND CAN BE CONVERTED TO GRID DISTANCES BY MULTIPLYING BY THE ABOVE STATED SCALE FACTOR OF 0.999999.

PLAN OF SURVEY
 OF PART OF
LOT 3, REGISTERED PLAN M-478
TOWNSHIP OF MUSKOKA LAKES
DISTRICT MUNICIPALITY OF MUSKOKA

SCALE: 1 INCH = 40 FEET

CHAPPLE, GALBRAITH SURVEYORS LTD.
 ONTARIO LAND SURVEYORS

SURVEYOR'S CERTIFICATE

I CERTIFY THAT:
 (1) THIS SURVEY AND PLAN ARE CORRECT AND IN ACCORDANCE WITH THE SURVEY ACT AND THE LAND SURVEY REGULATIONS AND THE REGULATIONS MADE UNDER THEM;
 (2) THE SURVEY WAS COMPLETED ON THE 22ND DAY OF JUNE, 2017.

DATED: 22 JUNE 2017
 D.B. CHAPPLE
 ONTARIO LAND SURVEYOR

PLAN 36R-25548

REGISTERED AND RECORDED
 DATE: NOVEMBER 30, 2017

DATE: NOVEMBER 14, 2017

SCHEDULE

PART	PART LOT	REGISTERED PLAN	PLAN
1	3	M-478	PART OF 48159-0016
2			

CHAPPLE, GALBRAITH SURVEYORS LTD.
 ONTARIO LAND SURVEYORS
 2 BAILEY STREET
 P.O. BOX 498, PORT CARLING, ONTARIO, POB 110.
 (705) 760-3678 info@chapplegalbraithsurveyors.com

DRAWN BY: [Name] SCALE: 1 inch = 40 feet
 CHECKED BY: [Name] DATE: [Date]