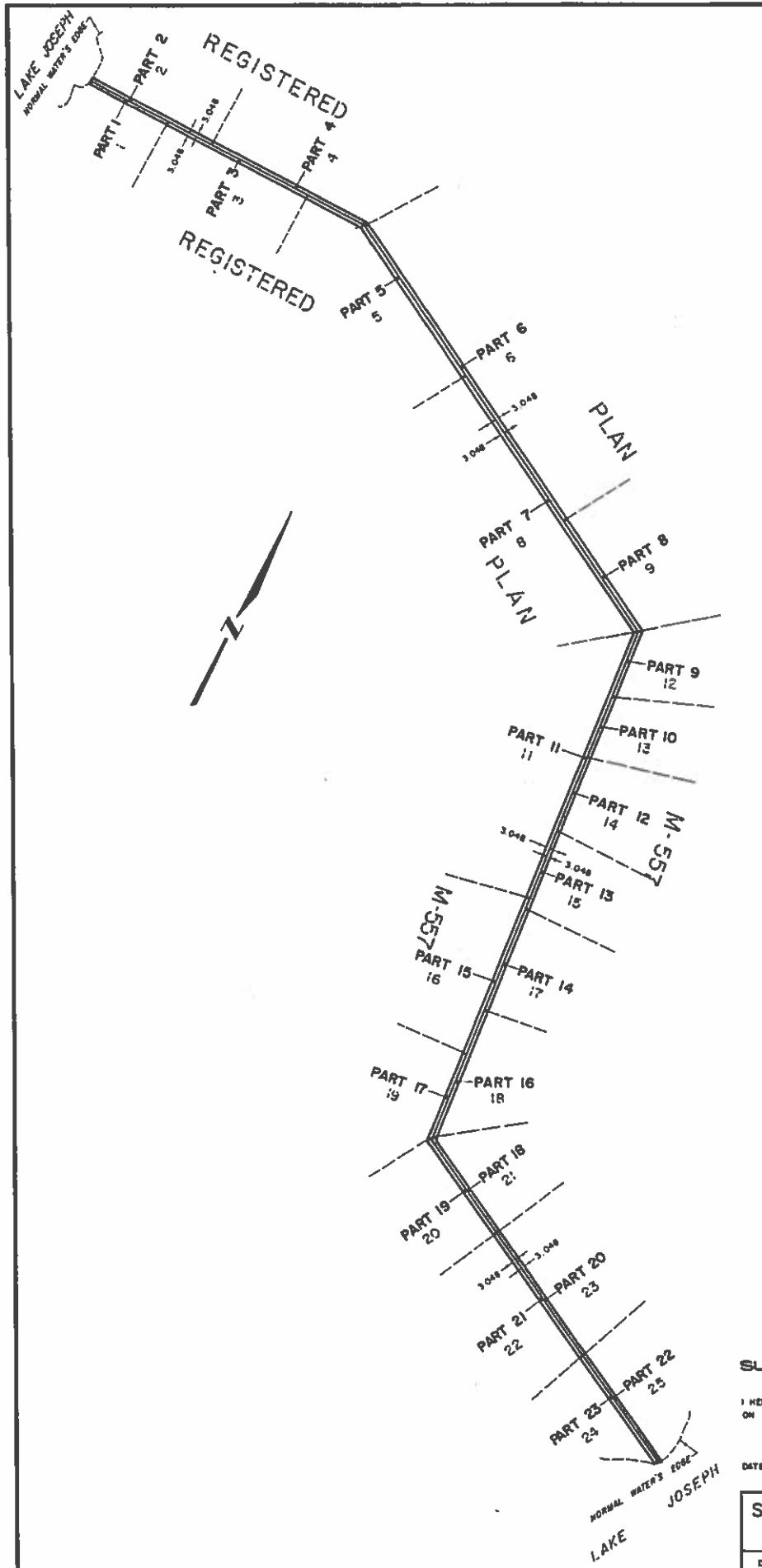




10538



I REQUIRE THIS PLAN TO BE DEPOSITED UNDER THE LAND TITLES ACT.

DATE FEB. 18, 1986

B. Agume  
D. SQUARE O.L.S.

PLAN 35R-10538

RECEIVED AND DEPOSITED

DATE MAR. 5, 1986

Abolis  
DEP. LAND REGISTRAR FOR THE LAND TITLES DIVISION OF THE DISTRICT OF MUSKOKA (NR 35)

CAUTION: THIS PLAN IS NOT A PLAN OF SUBDIVISION WITHIN THE MEANING OF THE PLANNING ACT

PARTS 1, 3, 5, 7, 11, 15, 17, 19, 21 (23) Comprise all of PART 3, PLAN 35R-6900  
PARTS 2, 4, 6, 8, 9, 10, 12, 13, 14, 16, 18, 20 (22) Comprise all of PART 4, PLAN 35R-6900

COMPILED PLAN OF PARTS OF LOTS 1, 2, 3, 4, 5, 6, 8, 9, 11, 12, 13, 14, 15, 16, 17, 18, 19, 20, 21, 22, 23, 24 AND 25.

REGISTERED PLAN M-557  
TOWNSHIP OF MUSKOKA LAKES  
DISTRICT MUNICIPALITY OF MUSKOKA

SCALE 1:4000

SPEIGHT AND VAN NOSTRAND LIMITED  
Ontario Land Surveyors - 1986

METRIC:  
DISTANCES SHOWN ON THIS PLAN ARE IN METRES AND CAN BE CONVERTED TO FEET BY DIVIDING BY 0.3048

NOTE:  
ALL PARTS SHOWN HEREON HAVE PERPENDICULAR WIDTHS AS SHOWN IN THE SCHEDULE AND ARE WHOLLY CONTAINED WITHIN THE LIMITS OF THE UNDERLYING LOTS

SCHEDULE				
PART	LOT	PERPENDICULAR WIDTHS	PART OF PARCELS	SECTION
1	1	3.048	1-1	M-557
2	2	3.048	2-1	M-557
3	3	3.048	1-1	M-557
4	4	3.048	4-1	M-557
5	5	3.048	2-1	M-557
6	6	3.048	4-1	M-557
7	8	3.048	7-1	M-557
8	9	3.048	4-1	M-557
9	12	3.048	2-1	M-557
10	13	3.048	2-1	M-557
11	11	3.048	1-1	M-557
12	14	3.048	2-1	M-557
13	15	3.048	15-1	M-557
14	17	3.048	17-1	M-557
15	16	3.048	1-1	M-557
16	18	3.048	2-1	M-557
17	19	3.048	1-1	M-557
18	21	3.048	1-1	M-557
19	20	3.048	1-1	M-557
20	23	3.048	1-1	M-557
21	22	3.048	1-1	M-557
22	25	3.048	1-1	M-557
23	24	3.048	1-1	M-557

**SURVEYOR'S CERTIFICATE**

I HEREBY CERTIFY THAT THIS IS AN ACCURATE COMPILATION BASED ON DATA DERIVED FROM REGISTERED PLAN M-557

DATE FEB. 18, 1986

B. Agume  
D. SQUARE  
ONTARIO LAND SURVEYOR

**SPEIGHT AND VAN NOSTRAND LIMITED**  
ONTARIO LAND SURVEYORS  
METROPOLITAN TORONTO, ONTARIO

DRAWN: G.D.S.      JOB NO: 86-3047  
CHECKED: B.S.      REF NO: 1/M-557