

OBSERVED REFERENCE POINTS (ORP) DERIVED FROM REAL TIME KINEMATIC (RTK) GPS OBSERVATIONS UTM ZONE 17, NAD83 (CSRS) (1997.0).

COORDINATES TO RURAL ACCURACY PER SECTION 14(2) OF ONTARIO REGULATION 218/10.

POINT ID	NORTHING	EASTING
ORP (A)	4993981.10	807478.41
ORP (B)	4993836.83	807443.82
ORP (C)	7993877.74	807481.38

COORDINATES CANNOT, IN THEMSELVES, BE USED TO RE-ESTABLISH CORNERS OR BOUNDARIES SHOWN ON THIS PLAN.

I REQUIRE THIS PLAN TO BE DEPOSITED UNDER THE LAND TITLES ACT.
 DATE: AUGUST 22, 2014
John W. Hiley
 JOHN W. HILEY, O.L.S.

PLAN 35R-2412

RECEIVED AND DEPOSITED
 DATE: September 15th 2014
John W. Hiley
 REPRESENTATIVE FOR THE LAND REGISTRAR FOR THE LAND TITLES DIVISION OF MUSKOKA

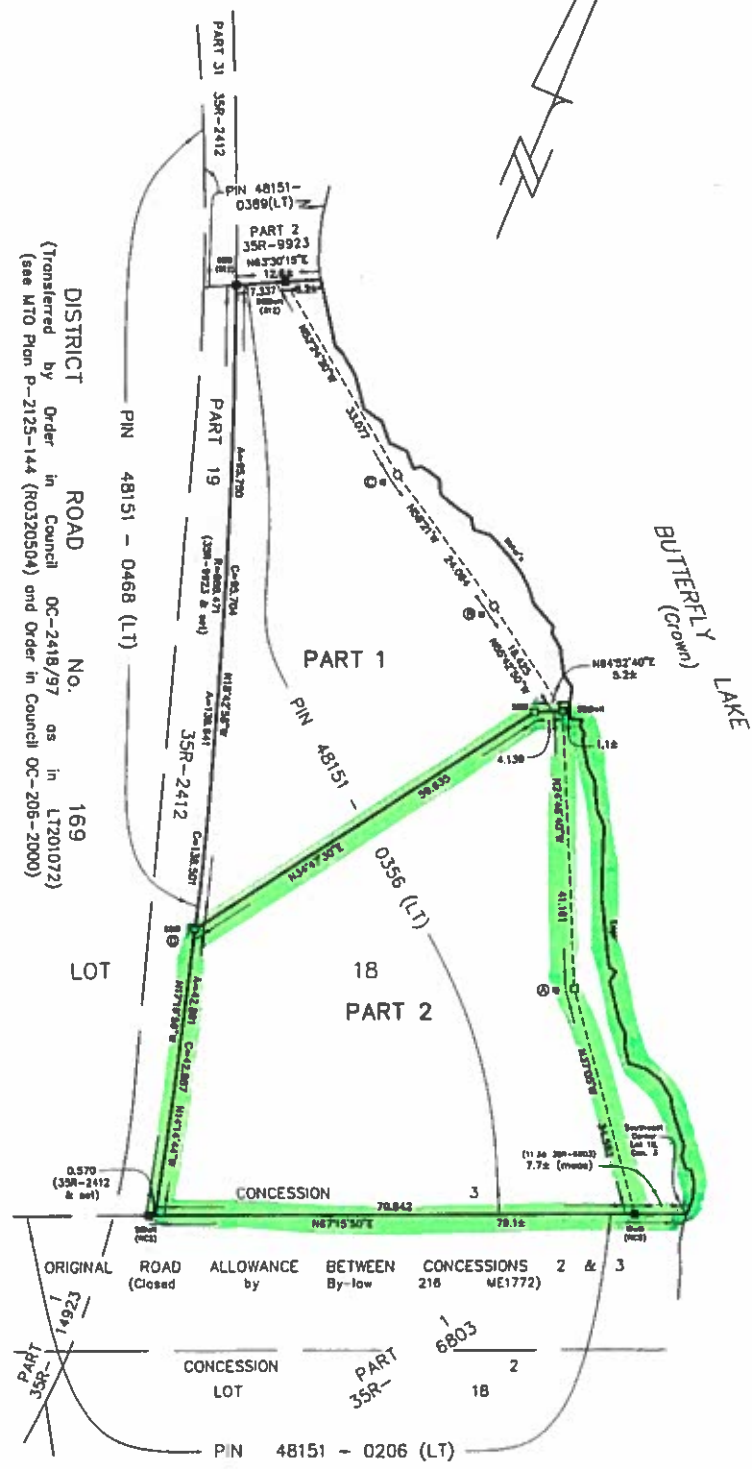
SCHEDULE				
PART	LOT	CON.	PIN	AREA
1	Part of 18	3	All of 48151-0356(LT)	2814 m ²
2				4047 m ²

PLAN OF SURVEY OF
 PART OF LOT 18, CONCESSION 3
 GEOGRAPHIC TOWNSHIP OF MEDORA
 TOWNSHIP OF MUSKOKA LAKES
 DISTRICT MUNICIPALITY OF MUSKOKA
 COOTE, HILEY, JEMMETT LIMITED

SCALE 1 : 500



DISTANCES AND COORDINATES SHOWN ON THIS PLAN ARE IN METRES AND CAN BE CONVERTED TO FEET BY DIVIDING BY 0.3048.



DISTRICT ROAD NO. 169
 (Transferred by Order in Council OC-2418/97 as in LT2010172)
 (see MTO Plan P-2125-144 (R0320504) and Order in Council OC-205-2000)

Radial Ties from (A)		Radial Ties from (B)		Radial Ties from (C)	
To Water's Edge		To Water's Edge		To Water's Edge	
Bearing	Distance	Bearing	Distance	Bearing	Distance
132°35'	38.7	131°02'	38.7	81°58'	7.0
128°28'	35.6	130°30'	33.8	73°17'	6.1
126°06'	33.8	127°44'	29.8	48°18'	3.7
123°04'	31.8	127°25'	27.8	47°35'	2.8
125°58'	31.2	123°54'	23.5	357°43'	3.8
125°13'	29.4	122°04'	23.1	323°21'	5.0
122°58'	28.4	121°58'	21.7	321°07'	8.3
119°33'	24.3	119°38'	21.2	310°33'	11.1
118°04'	22.5	123°24'	20.0	314°50'	18.1
118°08'	21.5	120°22'	18.5	313°21'	18.9
114°18'	18.4	117°48'	16.8	311°57'	21.2
115°32'	15.8	112°10'	14.4	314°54'	26.9
121°36'	13.6	100°01'	11.8	318°21'	31.4
118°58'	11.5	82°03'	8.3		
108°43'	10.0	88°28'	8.3		
103°30'	8.2	83°25'	5.8		
98°07'	5.4	41°58'	5.8		
49°41'	6.6	15°58'	6.5		
35°33'	4.1	353°04'	8.0		
8°03'	8.6	334°58'	10.6		
353°38'	14.2	329°03'	11.1		
348°31'	20.1	322°47'	11.8		
		321°18'	13.6		
		317°48'	15.4		

LEGEND

- MONUMENT PLANTED
- MONUMENT FOUND
- SBP STANDARD IRON BAR
- SSP SHORT STANDARD IRON BAR
- IB IRON BAR
- B12 H.P. LYDON O.L.S.
- RCS R.C. STEWART O.L.S.
- WT WITNESS

BEARINGS ARE UTM GRID, DERIVED FROM OBSERVED REFERENCE POINTS (A) AND (B), BY REAL TIME KINEMATIC (RTK) OBSERVATIONS, UTM ZONE 17, NAD83 (CSRS) (1997.0).

DISTANCES ON THIS PLAN ARE HORIZONTAL GROUND DISTANCES AND CAN BE CONVERTED TO GRID DISTANCES BY MULTIPLYING BY THE AVERAGE COMBINED SCALE FACTOR OF 0.99971123.

FOR BEARING COMPARISONS, THE FOLLOWING ROTATIONS WERE APPLIED TO CONVERT TO UTM BEARINGS

PLAN	ROTATION	DIRECTION
35R-2412	1°00'15"	COUNTERCLOCKWISE
35R-6803	0°46'10"	COUNTERCLOCKWISE
35R-8923	1°00'15"	COUNTERCLOCKWISE

SURVEYOR'S CERTIFICATE

I CERTIFY THAT:
 1 - THIS SURVEY AND PLAN ARE CORRECT AND IN ACCORDANCE WITH THE SURVEYS ACT, THE SURVEYORS ACT AND THE LAND TITLES ACT AND THE REGULATIONS MADE UNDER THEM.
 2 - THE SURVEY WAS COMPLETED ON THE 20th DAY OF AUGUST, 2014.

AUGUST 22, 2014
 BRACEBRIDGE, ONTARIO

John W. Hiley
 JOHN W. HILEY
 ONTARIO LAND SURVEYOR

COOTE, HILEY, JEMMETT LIMITED
 ONTARIO LAND SURVEYORS

Website: www.muskokasurveyors.com
 E-mail: survey@muskokasurveyors.com

127 Keith Road
 Bracebridge, Ontario
 P1L 0A1

Phone: 705-645-4811
 Fax: 800-494-1443
 705-645-1845

Drawn by: JH File: 32548

Archived Survey Plans: www.landsurveyrecords.com