

PLAN 35R - 24489  
RECEIVED AND DEPOSITED  
DATE: April 29th 2014

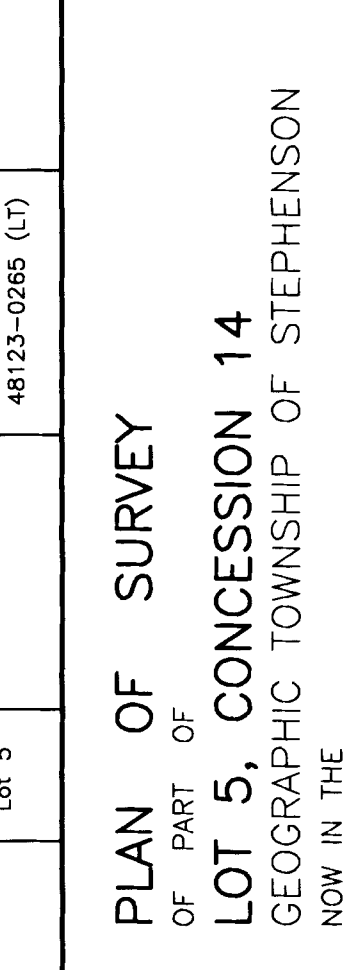
I REQUIRE THIS PLAN TO BE DEPOSITED UNDER THE LAND TITLES ACT.  
DATE: MARCH 31st, 2014  
E. J. WILLIAMS  
ONTARIO LAND SURVEYOR

REPRESENTATIVE FOR THE LAND REGISTRAR OF THE LAND TITLES DIVISION OF MUSKOKA  
E. J. WILLIAMS  
ONTARIO LAND SURVEYOR

SCHEDULE OF PARTS

PART	LOT	CONCESSION	PIN	AREA
1	Part of Lot 5	Concession 14	Part of PIN 48123-0265 (LT)	1.069± ha.

PLAN OF SURVEY  
OF PART OF  
**LOT 5, CONCESSION 14**  
GEOGRAPHIC TOWNSHIP OF STEPHENSON  
NOW IN THE  
TOWN OF HUNTSVILLE  
DISTRICT MUNICIPALITY OF MUSKOKA  
SCALE 1 : 500 (Metric)



E. J. WILLIAMS O.L.S.

LEGEND  
SIB DENOTES STANDARD IRON BAR  
SSIB DENOTES SHORT STANDARD IRON BAR  
IB DENOTES IRON BAR  
RIB DENOTES 0.019 Dia. ROUND IRON BAR  
RP DENOTES ROCK POST  
WIT. DENOTES WITNESS  
M DENOTES MONUMENT PLANTED  
(C&I) DENOTES COOTE, JACKSON AND HILEY LTD. O.L.S.  
(EJW) DENOTES E. J. WILLIAMS SURVEYING LTD. O.L.S.  
(MNR) DENOTES MINISTRY OF NATURAL RESOURCES  
(812) DENOTES N. P. LYNDON O.L.S.  
(951) DENOTES K. I. BEACON O.L.S.  
P DENOTES PLAN 35R-16218  
CLC DENOTES CENTRELINE OF CREEK  
PWE DENOTES PRESENT WATER'S EDGE  
OWE DENOTES ORIGINAL WATER'S EDGE  
M DENOTES MEASURED

SURVEYOR'S CERTIFICATE  
I CERTIFY THAT:  
1. THIS SURVEY AND PLAN ARE CORRECT AND IN ACCORDANCE WITH THE SURVEY ACT, THE SURVEYORS ACT AND THE LAND TITLES ACT AND THE REGULATIONS MADE UNDER THEM.  
2. THE SURVEY WAS COMPLETED ON THE 3rd DAY OF MARCH, 2014.

MARCH 31st, 2014  
Huntsville, Ontario  
E. J. WILLIAMS  
ONTARIO LAND SURVEYOR

METRIC: DISTANCES AND COORDINATES SHOWN ON THIS PLAN ARE IN METRES AND CAN BE CONVERTED TO FEET BY DIVIDING BY 0.3048.

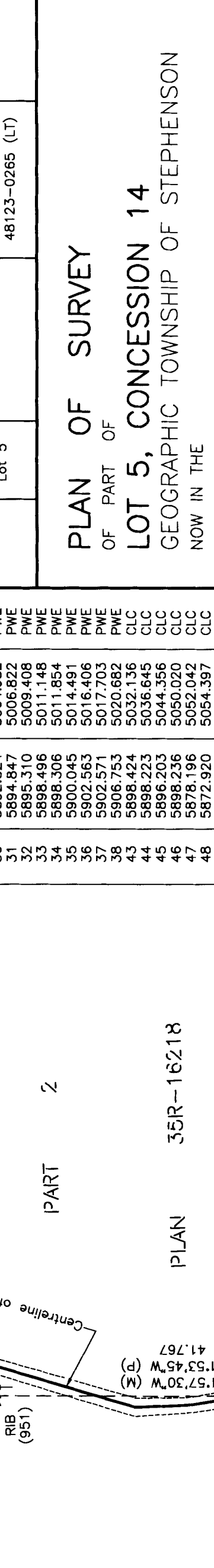
ONTARIO LAND SURVEYORS  
PLANNERS  
BURK'S FALLS HUNTSVILLE SOUTH RIVER  
Main Office: 6-133 Highway #60 P1H 1C2  
Huntsville, Ontario  
Phone: 705-789-4171  
Fax: 705-789-1097  
Email: info@ejwilliamsurveying.com

COORDINATE FEATURES LISTING

Station	Northing	Easting	Feature
3	5850.872	4950.921	SSIB
9	5856.757	4942.415	PWE
10	5856.786	4945.344	PWE
11	5857.305	4949.504	PWE
12	5857.305	4950.272	PWE
13	5856.677	4952.894	PWE
14	5859.449	4955.475	PWE
15	5859.573	4958.937	PWE
16	5861.002	4961.562	PWE
17	5863.454	4963.454	PWE
18	5860.508	4964.097	PWE
19	5861.449	4967.218	PWE
20	5860.976	4969.153	PWE
21	5864.791	4976.002	PWE
22	5898.920	5014.443	RIB
24	5867.613	4980.553	PWE
25	5869.539	4982.898	PWE
26	5872.536	4987.397	PWE
27	5876.162	4992.051	PWE
28	5881.064	4995.388	PWE
29	5888.828	5001.352	PWE
30	5892.524	5004.982	PWE
31	5894.847	5006.822	PWE
32	5895.310	5009.408	PWE
33	5898.496	5011.748	PWE
34	5898.306	5011.854	PWE
35	5900.045	5014.491	PWE
36	5902.563	5016.406	PWE
37	5902.571	5017.703	PWE
38	5906.753	5020.682	PWE
43	5898.424	5032.136	CLC
44	5898.223	5036.645	CLC
45	5896.203	5044.356	CLC
46	5898.236	5050.020	CLC
47	5878.196	5052.042	CLC
48	5872.920	5054.397	CLC
49	5884.115	5059.574	CLC
50	5857.011	5066.671	CLC
53	5857.835	5078.426	CLC
54	5860.686	5085.075	CLC
55	5862.547	5092.195	CLC
56	5860.624	5095.444	CLC
57	5859.363	5102.745	CLC
58	5859.321	5116.398	CLC
59	5900.878	5029.819	CLC
72	5907.619	5028.814	CLC
73	5910.342	5022.916	CLC
74	5908.322	5021.495	PWE
75	5912.533	5017.255	PWE
79	5853.357	5108.659	SSIB
80	5859.162	5118.521	CLC
81	5857.849	5119.125	CLC
82	5857.617	5122.526	CLC
86	5857.563	4936.849	OWE
87	5853.618	4953.620	OWE
88	5857.543	4973.662	OWE
89	5878.403	4988.809	OWE
90	5896.305	5001.954	OWE
91	5917.336	5009.993	OWE
95	5910.420	5019.382	PWE

Coordinate Origin Assumed  
(Coordinates in this Listing are Grid Bearings and Ground Distances)

INTEGRATION DATA  
COORDINATES ARE DERIVED FROM SIMULTANEOUS STATIC GNSS OBSERVATIONS ON CONTROL MONUMENT 0801976847A. THEY ARE REFERRED TO UTM ZONE 17 (CENTRAL MERIDIAN 81° W) NAD 83 (CSRS, 1997).  
COORDINATES ARE TO RURAL ACCURACY PER SEC. 14(2) OF O. REG 216/10.



NOTE  
CONTOUR OF ELEVATION 280.20 metres (CGVD28) AS ESTABLISHED BY SURVEY AND SHOWN ON THIS PLAN HAS BEEN ACCEPTED AS BEING THE BEST AVAILABLE EVIDENCE OF THE LIMIT OF SKELETON LAKE AS IT EXISTED AT THE TIME OF THE ORIGINAL SURVEY OF THE TOWNSHIP OF STEPHENSON.  
ELEVATIONS SHOWN HEREON ARE REFERRED TO THE TOP OF AN SIB (MNR) LOCATED APPROXIMATELY 4.3 metres EAST OF SKELETON LAKE IN THE CENTRE OF THE ORIGINAL ROAD ALLOWANCE BETWEEN THE TOWNSHIPS OF STEPHENSON AND DISTRICT ADJACENT TO LOT 5, CONCESSION 14, TOWNSHIP OF STEPHENSON, HAVING AN ELEVATION OF 281.120 metres (CGVD28) AS SHOWN ON A SURVEYOR'S REAL PROPERTY REPORT BY E. J. WILLIAMS SURVEYING LTD. O.L.S. DATED OCTOBER 2nd, 2008 (File #11685-07).

PLAN 35R-16218  
PIN 48123-0093 (LT)  
PLAN 35R-14835  
PIN 48123-0273 (LT)

PLAN 35R-14835  
PIN 48123-0034 (LT)  
CONCESSION 14  
CONCESSION 13

POINT ID	NORTHING	EASTING
3	5013116.563	624306.359
8	5013123.122	624304.058
70	5013209.561	624389.168

COORDINATES CANNOT, IN THEMSELVES, BE USED TO RE-ESTABLISH CORNERS OR BOUNDARIES SHOWN ON THIS PLAN.  
BEARINGS ARE UTM GRID, DERIVED FROM SIMULTANEOUS GPS OBSERVATIONS FROM POINT 8 TO 70, HAVING A BEARING OF N44°33'22"W, UTM ZONE 17 CENTRAL MERIDIAN 81° W NAD 83 (CSRS, 1997).  
FOR BEARING COMPARISONS, A ROTATION OF 1'12'35" COUNTER-CLOCKWISE WAS APPLIED TO BEARINGS ON UNDERLYING PLANS.  
DISTANCES ARE GROUND AND CAN BE CONVERTED TO GRID BY MULTIPLYING BY THE COMBINED SCALE FACTOR OF 0.99975139.