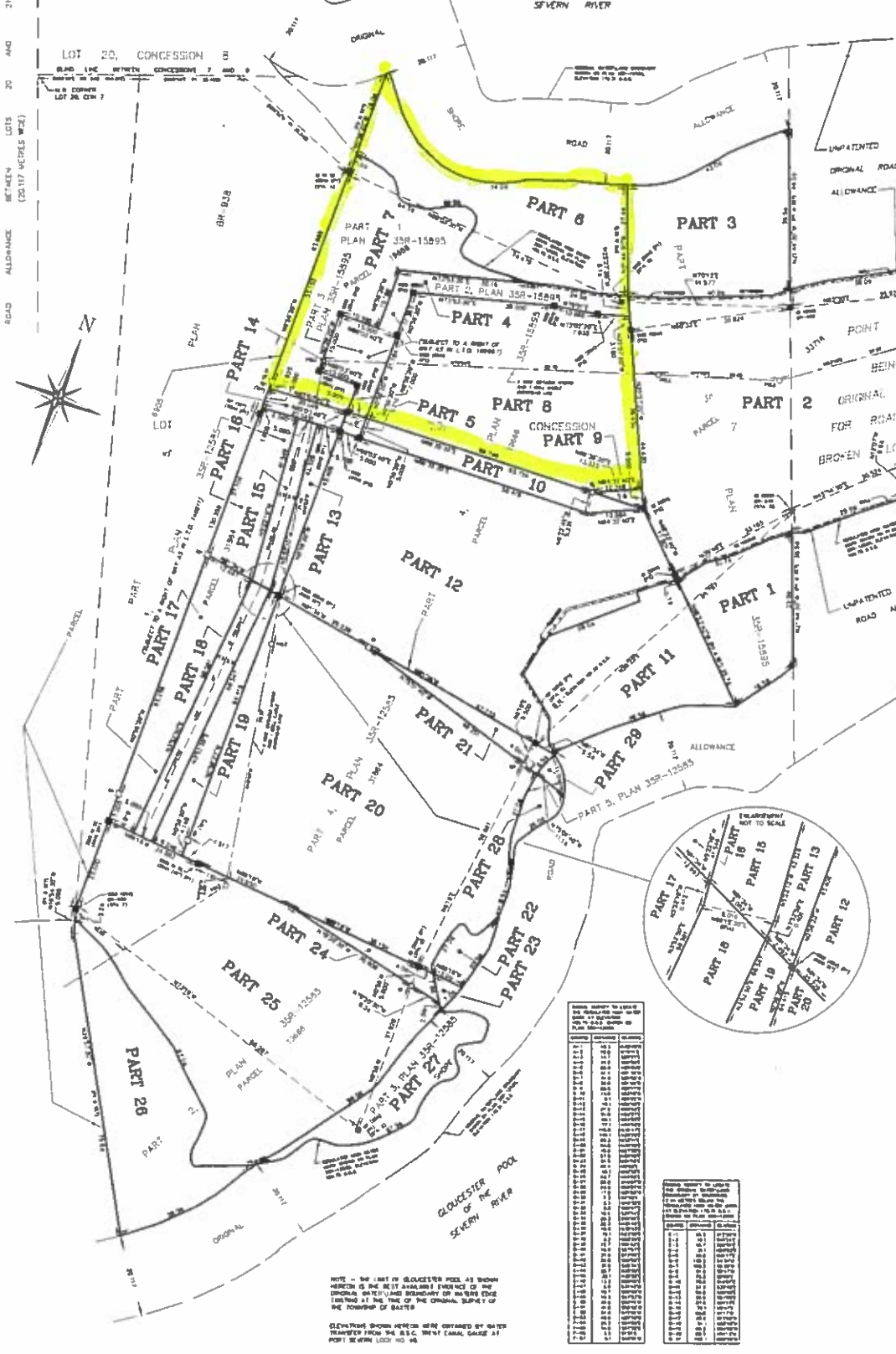


17449

METRIC DISTANCES SHOWN ON THIS PLAN ARE IN METRES AND CAN BE CONVERTED TO FEET BY DIVIDING BY 0.3048



PLAN 35R-17449
 AUGUST 18, 1998
 A/S. Mary C. Clodde

SCHEDULE

Part	LOT	CONCESSION	PARCEL
1	PART OF 30		ALL OF 3376
2	PART OF THE ORIGINAL RESERVATION FOR ROAD EAST OF LOT 20, CONCESSION 7		PART OF 10000
3	PART OF 30		ALL OF 3376
4	PART OF 30		PART OF 10000
5	PART OF 30		ALL OF 3376
6	PART OF 30		PART OF 10000
7	PART OF 30		ALL OF 3376
8	PART OF 30		PART OF 10000
9	PART OF 30		ALL OF 3376
10	PART OF 30		PART OF 10000
11	PART OF 30		ALL OF 3376
12	PART OF 30		PART OF 10000
13	PART OF 30		ALL OF 3376
14	PART OF 30		PART OF 10000
15	PART OF 30		ALL OF 3376
16	PART OF 30		PART OF 10000
17	PART OF 30		ALL OF 3376
18	PART OF 30		PART OF 10000
19	PART OF 30		ALL OF 3376
20	PART OF 30		PART OF 10000
21	PART OF 30		ALL OF 3376
22	PART OF 30		PART OF 10000
23	PART OF 30		ALL OF 3376
24	PART OF 30		PART OF 10000
25	PART OF 30		ALL OF 3376
26	PART OF 30		PART OF 10000
27	PART OF 30		ALL OF 3376
28	PART OF 30		PART OF 10000

AREA SCHEDULE

PART	AREA
1	200 sq m
2	0.428 ha
3	0.154 ha
4	0.000 ha
5	24.54 ha
6	0.128 ha
7	0.188 ha
8	0.243 ha
9	0.287 ha
10	0.000 ha
11	24.54 ha
12	0.128 ha
13	0.200 ha
14	0.000 ha
15	24.54 ha
16	0.428 ha
17	0.275 ha
18	0.377 ha
19	0.000 ha
20	0.473 ha
21	0.000 ha
22	0.128 ha
23	0.128 ha
24	0.128 ha
25	0.200 ha
26	0.128 ha
27	0.000 ha
28	0.128 ha
29	0.128 ha
30	0.128 ha

PLAN OF SURVEY
 OF PART OF
 BROKEN LOT 20, CONCESSION 7
 AND PART OF THE
 ORIGINAL SHORE ROAD ALLOWANCE
 IN FRONT THEREOF
 AND PART OF THE POINT OF LAND BEING THE
 ORIGINAL RESERVATION FOR ROAD
 EAST OF BROKEN LOT 20, CONCESSION 7
 GEOGRAPHIC TOWNSHIP OF BAXTER
 NOW IN THE
 TOWNSHIP OF GEORGIAN BAY
 IN THE
 DISTRICT MUNICIPALITY OF MUSKOKA

SCALE = 1:500

GALBRAITH, VOLLECK SURVEYORS LTD.
 ONTARIO LAND SURVEYORS

SURVEYOR'S CERTIFICATE

I CERTIFY THAT:
 (1) THIS SURVEY AND PLAN ARE CORRECT AND IN ACCORDANCE WITH THE SURVEY ACT, THE SURVEYOR'S ACT AND THE LAND RULES ACT AND THE REGULATIONS MADE UNDER THEM
 (2) THE SURVEY WAS COMPLETED ON THE 18TH DAY OF MARCH 1998

GALBRAITH, ONTARIO
 MARCH 30TH, 1998

LEGEND

SPRINKLER SHOWS HEREON ARE IN METRES AND 25.00 METRE PARTS THEREOF
 UNDEVELOPED AREAS ARE AS NOTED
 (S) SURVEYOR'S SHOWN CORNER FOUND
 (D) SURVEYOR'S SHOWN CORNER FOUND
 (O) SURVEYOR'S SHOWN CORNER FOUND
 (P) SURVEYOR'S SHOWN CORNER FOUND
 (M) SURVEYOR'S SHOWN CORNER FOUND
 (N) SURVEYOR'S SHOWN CORNER FOUND
 (E) SURVEYOR'S SHOWN CORNER FOUND
 (W) SURVEYOR'S SHOWN CORNER FOUND
 (S) SURVEYOR'S SHOWN CORNER FOUND
 (D) SURVEYOR'S SHOWN CORNER FOUND
 (O) SURVEYOR'S SHOWN CORNER FOUND
 (P) SURVEYOR'S SHOWN CORNER FOUND
 (M) SURVEYOR'S SHOWN CORNER FOUND
 (N) SURVEYOR'S SHOWN CORNER FOUND
 (E) SURVEYOR'S SHOWN CORNER FOUND
 (W) SURVEYOR'S SHOWN CORNER FOUND

GALBRAITH, VOLLECK SURVEYORS LTD.
 ONTARIO LAND SURVEYORS
 4 JOHN STREET,
 P.O. BOX 113, COLDWATER, ONTARIO, L0K 1P0
 (705) 836-7200 FAX (705) 846-7200

DRAWN BY: [Name] CHECKED BY: [Name] SCALE: 1:500

Notes

1. The survey was conducted in accordance with the Survey Act, the Surveyor's Act and the Land Rules Act and the Regulations made under them.
2. The survey was completed on the 18th day of March 1998.
3. The survey was conducted in accordance with the Survey Act, the Surveyor's Act and the Land Rules Act and the Regulations made under them.
4. The survey was completed on the 18th day of March 1998.
5. The survey was conducted in accordance with the Survey Act, the Surveyor's Act and the Land Rules Act and the Regulations made under them.
6. The survey was completed on the 18th day of March 1998.
7. The survey was conducted in accordance with the Survey Act, the Surveyor's Act and the Land Rules Act and the Regulations made under them.
8. The survey was completed on the 18th day of March 1998.
9. The survey was conducted in accordance with the Survey Act, the Surveyor's Act and the Land Rules Act and the Regulations made under them.
10. The survey was completed on the 18th day of March 1998.

Notes

1. The survey was conducted in accordance with the Survey Act, the Surveyor's Act and the Land Rules Act and the Regulations made under them.
2. The survey was completed on the 18th day of March 1998.
3. The survey was conducted in accordance with the Survey Act, the Surveyor's Act and the Land Rules Act and the Regulations made under them.
4. The survey was completed on the 18th day of March 1998.
5. The survey was conducted in accordance with the Survey Act, the Surveyor's Act and the Land Rules Act and the Regulations made under them.
6. The survey was completed on the 18th day of March 1998.
7. The survey was conducted in accordance with the Survey Act, the Surveyor's Act and the Land Rules Act and the Regulations made under them.
8. The survey was completed on the 18th day of March 1998.
9. The survey was conducted in accordance with the Survey Act, the Surveyor's Act and the Land Rules Act and the Regulations made under them.
10. The survey was completed on the 18th day of March 1998.

NOTE - THE LIMIT OF GLOUCESTER POOL AS SHOWN HEREON IS THE BEST AVAILABLE EVIDENCE OF THE ORIGINAL WATER-LAND BOUNDARY OR BOUNDARY LINE EXISTING AT THE TIME OF THE ORIGINAL SURVEY OF THE TOWNSHIP OF BAXTER

ELEVATION SHOWN HEREON WERE OBTAINED BY WATER TRANSFER FROM THE B.S.C. WEST CANAL GAUGE AT PORT SEVERN LOCK NO. 46