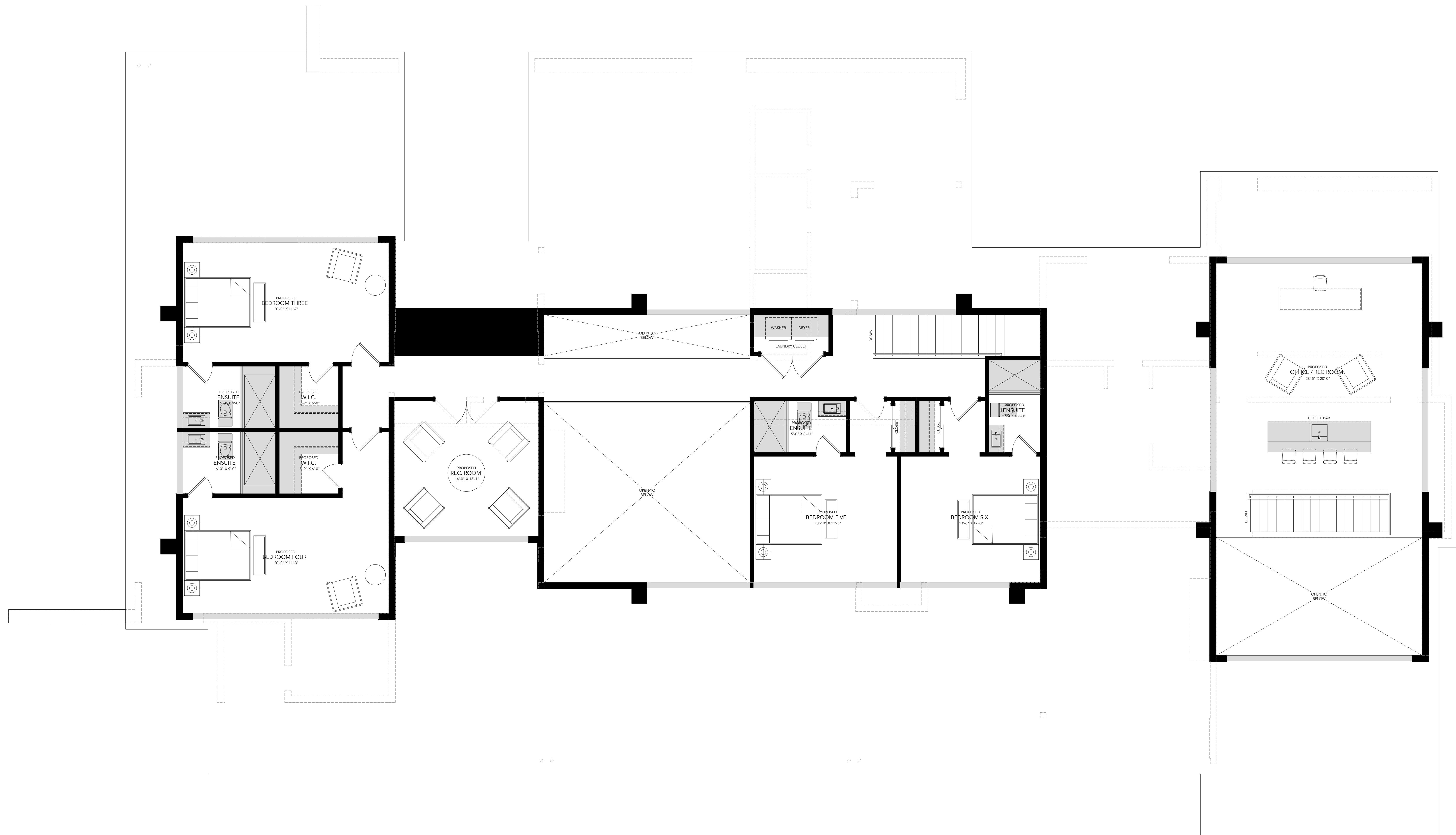
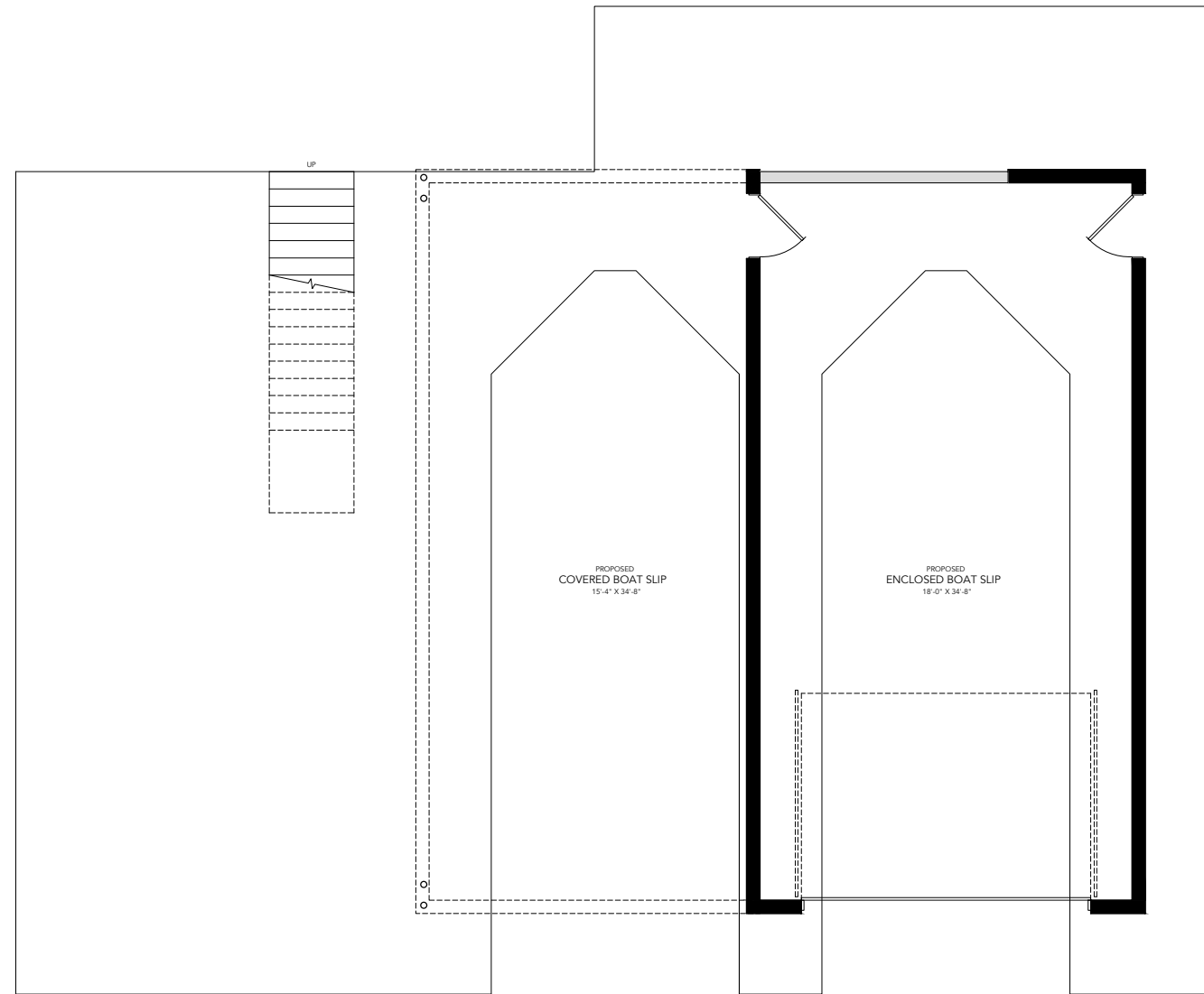
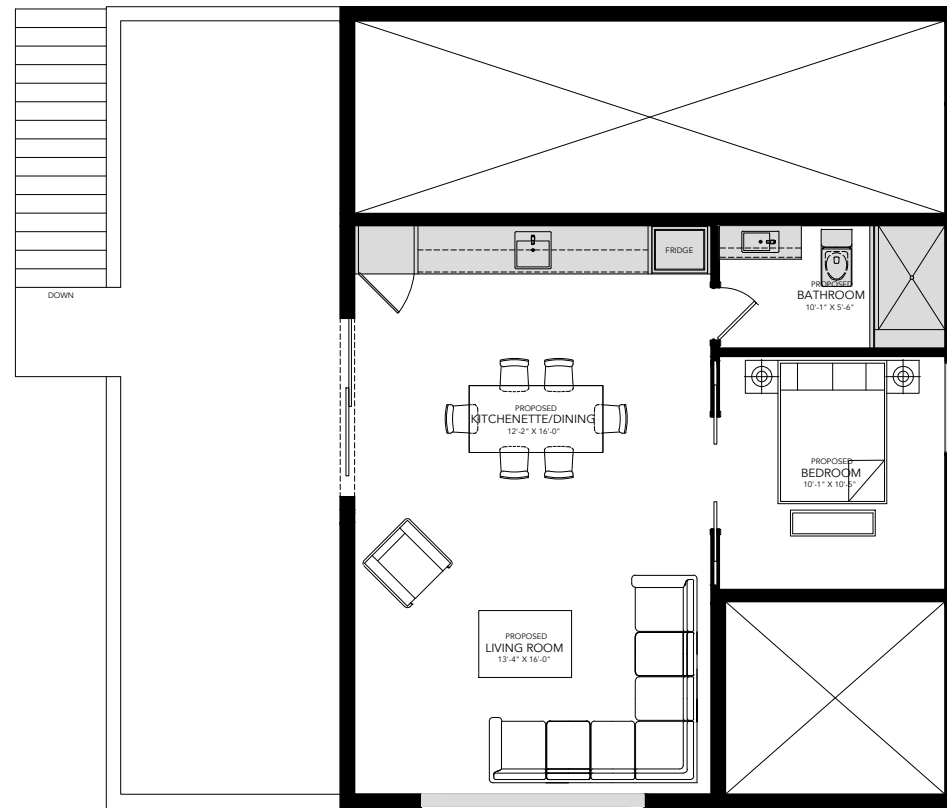


**JUST[IN]**  
 justin sherry design studio



**JUST[IN]**  
 justin sherry design studio



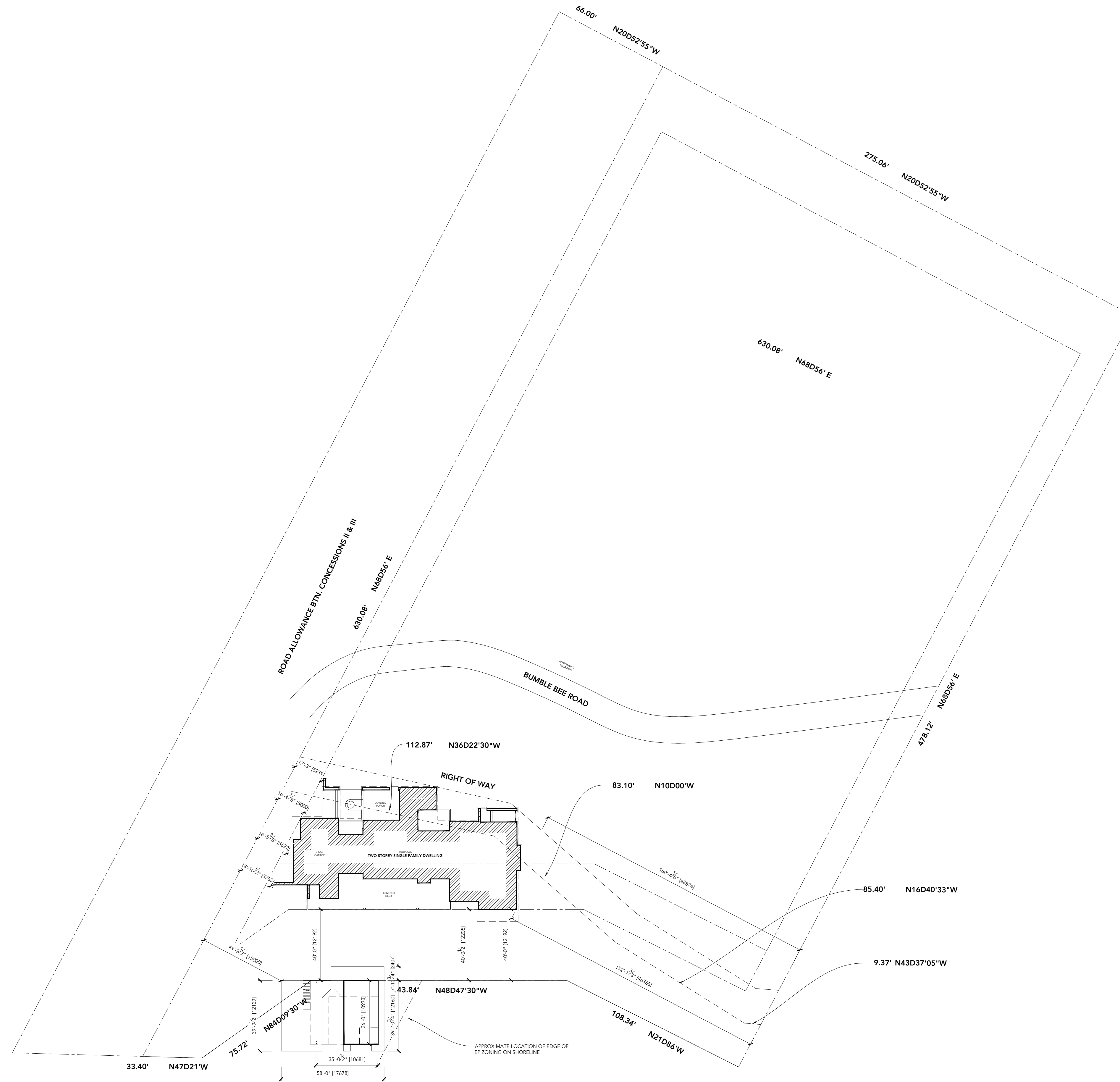


**JUST[IN]**  
 justin sherry design studio

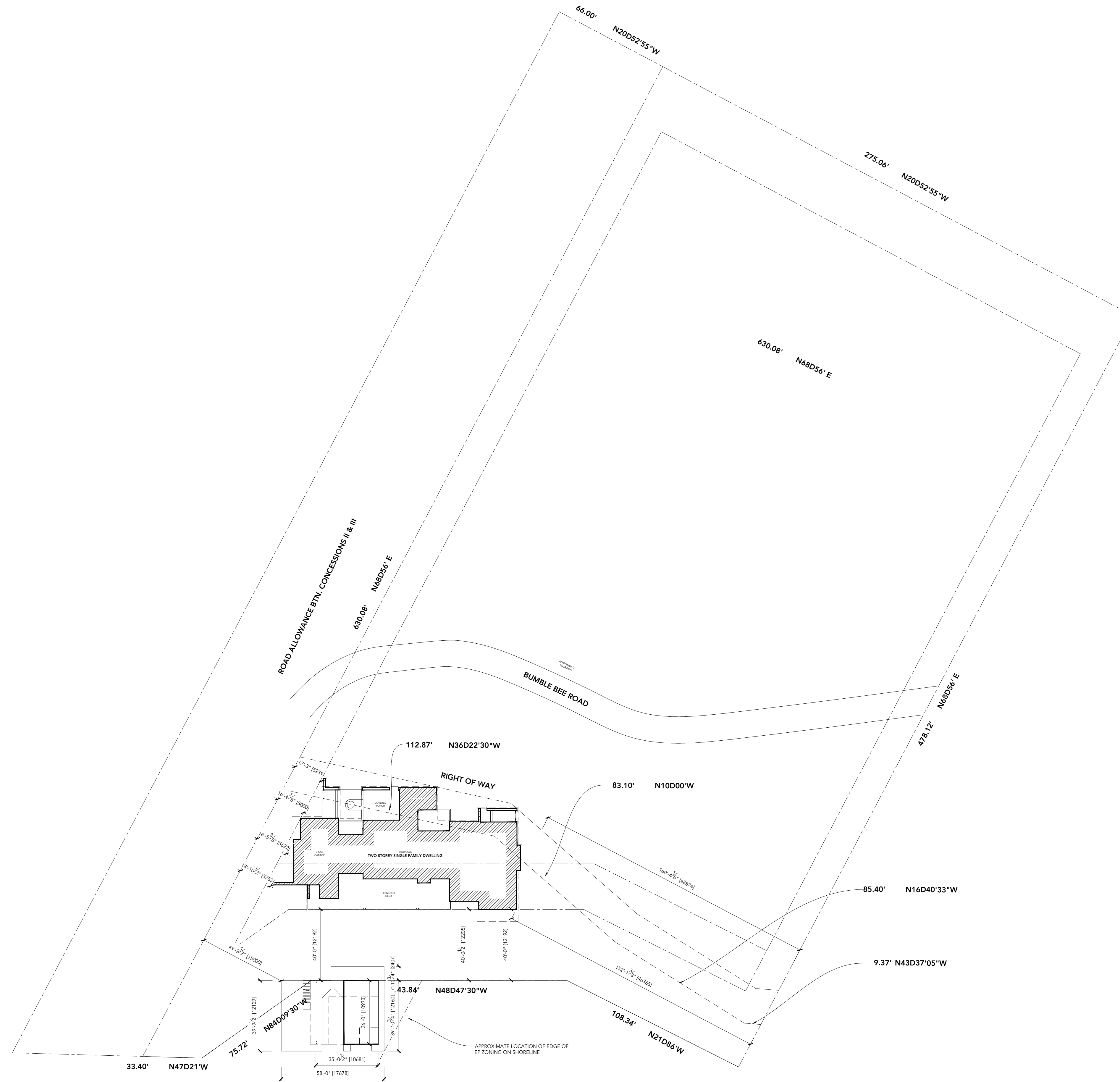
BOATHOUSE SECOND FLOOR PLAN

BOATHOUSE SECOND FLOOR PLAN  
 DRAWN BY: JUSTIN SHERRY  
 ISSUED FOR: REVIEW  
 11.10.2021  
 PROJECT NO.: 2021-168  
 BUMBLE BEE ROAD, MUSKOKA LAKES, ONTARIO

SHEET  
**04**



**JUST[IN]**  
justin sherry design studio



**JUST[IN]**  
justin sherry design studio