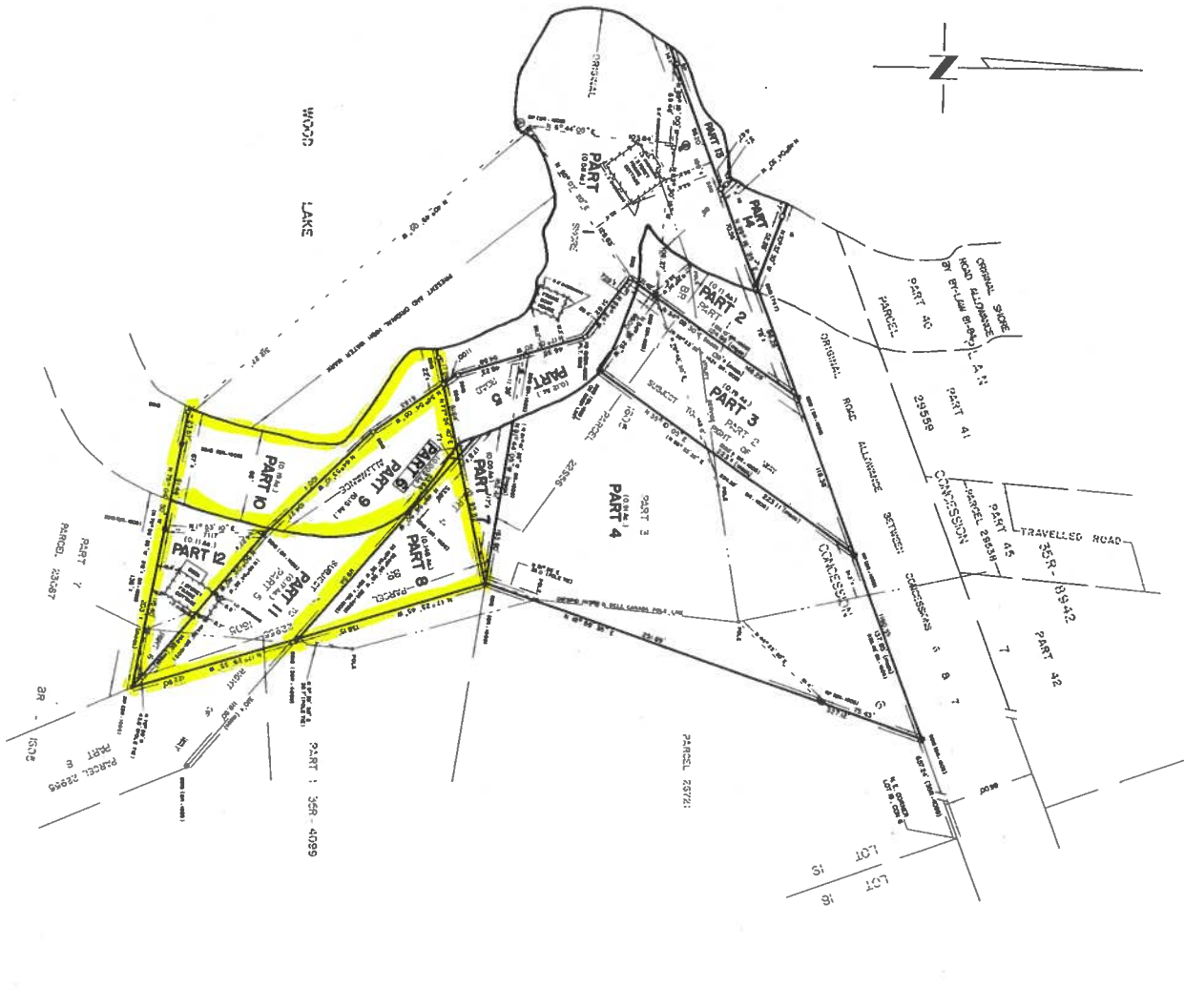
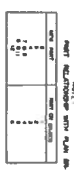


PLANS 35R-9587
 RECEIVED AND CORRECTED
 DATE: June 16, 1984
 APPROVED: [Signature]
 DISTRICT MUNICIPALITY OF MANSKOKA

DATE	1984
SCALE	1" = 40'
PROJECT	CONCESSION 6
OWNER	COOTE AND JACKSON LIMITED
PREPARED BY	[Signature]
CHECKED BY	[Signature]
DATE	1984



LOCAL SHORE LINE FROM

LINE	BEARING	DISTANCE
1	N 10° 00' 00" W	100.00
2	N 89° 00' 00" E	100.00
3	S 89° 00' 00" E	100.00
4	S 10° 00' 00" W	100.00
5	N 10° 00' 00" W	100.00
6	N 89° 00' 00" E	100.00
7	S 89° 00' 00" E	100.00
8	S 10° 00' 00" W	100.00
9	N 10° 00' 00" W	100.00
10	N 89° 00' 00" E	100.00
11	S 89° 00' 00" E	100.00
12	S 10° 00' 00" W	100.00
13	N 10° 00' 00" W	100.00
14	N 89° 00' 00" E	100.00
15	S 89° 00' 00" E	100.00
16	S 10° 00' 00" W	100.00
17	N 10° 00' 00" W	100.00
18	N 89° 00' 00" E	100.00
19	S 89° 00' 00" E	100.00
20	S 10° 00' 00" W	100.00

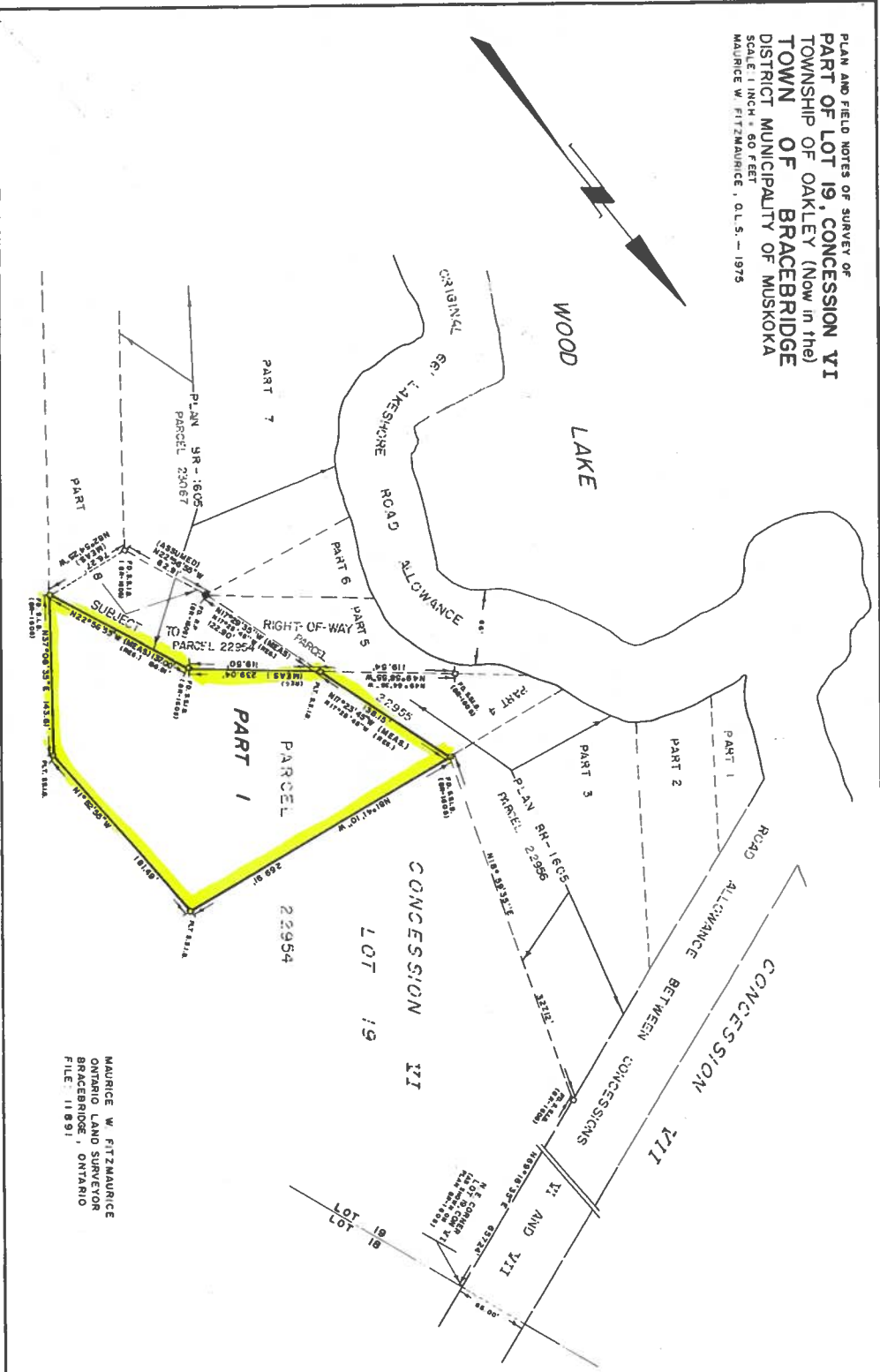
NOTE:
 THE PART OF WOOD LAKE ADJACENT TO
 THE EAST AND SOUTH SIDES OF
 CONCESSION 6 IS NOT SUBJECT TO THIS
 PLAN OF SUBDIVISION AS IT IS
 LOCATED OUTSIDE THE BOUNDARIES OF THE
 DISTRICT MUNICIPALITY OF MANSKOKA.

PLAN OF SURVEY OF
 PART OF LOT 19, CONCESSION 6
 PART OF THE ORIGINAL SHORE ROAD ALLOWANCE IN FRONT THEREOF
 AND PART OF THE ORIGINAL SHORE ROAD ALLOWANCE IN
 FRONT OF THE ORIGINAL ROAD ALLOWANCE BETWEEN
 CONCESSIONS 6, 7, 8 AND 9 IN FRONT OF LOT 19
 TOWNSHIP OF OAKLEY (now in the)
 TOWN OF BRACEBRIDGE
 DISTRICT MUNICIPALITY OF MANSKOKA
 COOTE AND JACKSON LIMITED 1984
 SCALE: 1" = 40 FEET

LEGEND
 1. SHADING ARE APPROVED AND ARE REFERRED TO THE SURVEY PLAN
 OF PART 1, 2, 3, 4, 5, 6, 7, 8, 9, 10, 11, 12, 13, 14, 15, 16, 17, 18, 19, 20
 2. DOTTED LINES INDICATE PLANNED
 3. DOTTED LINES INDICATE ROAD
 4. DOTTED LINES INDICATE ROAD
 5. DOTTED LINES INDICATE ROAD
 6. DOTTED LINES INDICATE ROAD
 7. DOTTED LINES INDICATE ROAD
 8. DOTTED LINES INDICATE ROAD
 9. DOTTED LINES INDICATE ROAD
 10. DOTTED LINES INDICATE ROAD
 11. DOTTED LINES INDICATE ROAD
 12. DOTTED LINES INDICATE ROAD
 13. DOTTED LINES INDICATE ROAD
 14. DOTTED LINES INDICATE ROAD
 15. DOTTED LINES INDICATE ROAD
 16. DOTTED LINES INDICATE ROAD
 17. DOTTED LINES INDICATE ROAD
 18. DOTTED LINES INDICATE ROAD
 19. DOTTED LINES INDICATE ROAD
 20. DOTTED LINES INDICATE ROAD

COOTE AND JACKSON LIMITED
 ONTARIO LAND SURVEYORS
 1000 W. HART ST.
 TORONTO, ONT. M5S 1A5

PLAN AND FIELD NOTES OF SURVEY OF
 PART OF LOT 19, CONCESSION VI
 TOWNSHIP OF OAKLEY (Now in the)
 DISTRICT MUNICIPALITY OF MUSKOKA
 OF BRACEBRIDGE
 SCALE 1 INCH = 50 FEET
 MAURICE W. FITZMAURICE, O.L.S. - 1975



MAURICE W. FITZMAURICE
 ONTARIO LAND SURVEYOR
 BRACEBRIDGE, ONTARIO
 FILE 11 891

SURVEYOR'S CERTIFICATE
 I HEREBY CERTIFY:
 1. THAT THE SURVEY AND PLAN ARE CORRECT AND IN ACCORDANCE WITH THE SURVEY ACT AND THE REGULATIONS MADE THEREUNDER.
 2. THAT I WAS PRESENT AT AND DID PERSONALLY SUPERVISE THE SURVEY REPRESENTED BY THIS PLAN.
 3. THAT THIS PLAN CONTAINS A TRUE COPY OF THE FIELD NOTES OF THE SURVEY.
 4. THAT THE SURVEY WAS COMPLETED ON THE 15th DAY OF JUNE, 1975.
 MAURICE W. FITZMAURICE
 ONTARIO LAND SURVEYOR

NOTES
 DISTANCES ARE IN FEET AND ORIGINALS THEREOF. ALL HANGING LINES HAVE BEEN VENTURED.
 DASHES—DEVOTES SHORT STANDARD IRON BAR (1/4" x 2 1/2").
 DOTS—DEVOTES STRAIGHT IRON BAR (1/4" x 4 1/2").
 @—DEVOTES ROCKPOST DIVISION WITH TOP END BENT.
 P.L.—DEVOTES P.L.ANCHOR.
 P.D.—DEVOTES P.O.N.
 (MKS)—DEVOTES METERS (PLAN BR-18001).
 (MKS)—DEVOTES METERS.

PLAN 36R-4099
 APPROVED: AUG. 27, 1975
 ASSISTANT EXAMINER OF SURVEYS
 PLAN 35R-4099
 RECORDED UNDER NO. 27 AUGUST 1975
 M.P.S. - 5279 2-L-1
 ONT. LAND REGISTRAR

4099

1605

PLAN AND FIELD NOTES OF SURVEY OF
PART OF LOT 19, CON VI
TOWNSHIP OF OAKLEY
DISTRICT OF MUSKOKA
 SCALE 1" = 60'
 M W FITZMAURICE OLS 1969

PLAN BR-1605

APPROVED - Dec. 27, 1969
 EXAMINER OF SURVEYS
 PLAN BR-1605
 RECORDED - 30 OCT 1969
 MASTER OF TITLES
 PARTS 1 to 9 inclusive - PART OF PARCEL 5444
 RE-ENTERED AS P.L. 23064

NOTES

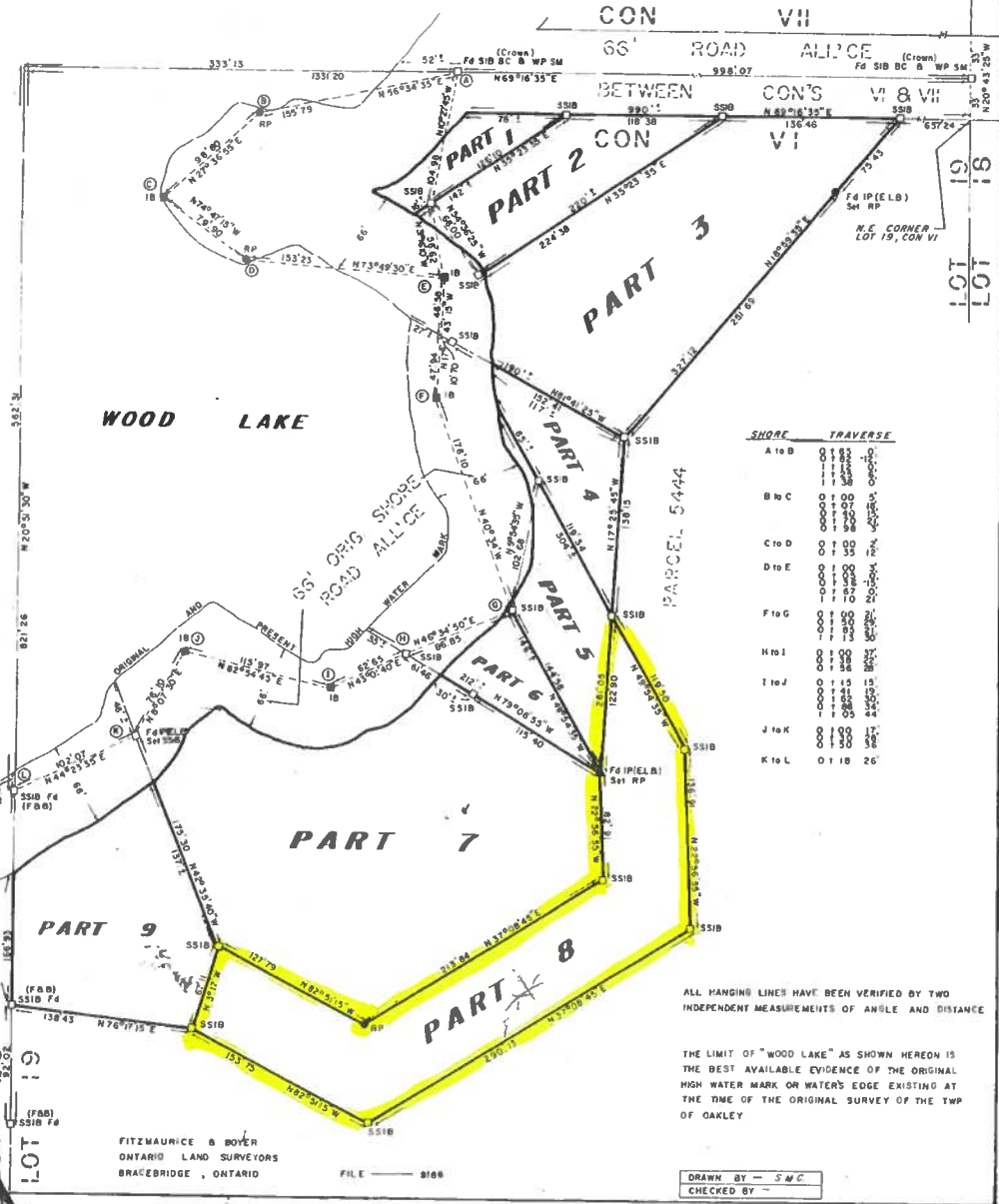
DISTANCES ARE IN FEET AND DECIMALS THEREOF
 BEARINGS ARE ASTRONOMIC AND REFERRED TO THE CENTRE
 LINE OF THE ROAD ALL'CE BETWEEN CON'S VI & VII IN FRONT
 OF LOT 19, WHICH HAS AN ASSUMED BEARING OF N 69° 16' 35" E
 AS SHOWN ON A DEPT. OF LANDS AND FORESTS CROWN RETRAITEMENT
 PLAN (Their file 169425 - Year 1964).

SURVEYOR'S CERTIFICATE

I HEREBY CERTIFY THAT
 1) THIS SURVEY AND PLAN ARE CORRECT AND IN ACCORDANCE
 WITH THE SURVEYS ACT AND THE LAND TITLES ACT
 AND THE REGULATIONS MADE THEREUNDER,
 2) I WAS PRESENT AT AND DID PERSONALLY SUPERVISE THE
 SURVEY REPRESENTED BY THIS PLAN,
 3) THIS PLAN CONTAINS A TRUE COPY OF THE FIELD NOTES
 OF SURVEY,
 4) THE SURVEY WAS COMPLETED ON THE 30th DAY OF
 APRIL, 1969

- SSIB IRON BAR (1" x 1" x 24")
- 3IB IRON BAR (1" x 1" x 48")
- IB IRON BAR (5/8" x 3/4" x 24")
- IP IRON PIPE
- RP ROCK PLUG 1/4" x 3/4" WITH CAP AND BOLT
- WP SM WOOD POST & STONE MOUND
- BC BRONZE CAP
- F & B FITZMAURICE & BOYER OLS
- E L B EL BURGESS OLS
- F 4 FOUND

MAY 21/69 Maurice W. Fitzmaurice
 ONTARIO LAND SURVEYOR



ALL HANGING LINES HAVE BEEN VERIFIED BY TWO
 INDEPENDENT MEASUREMENTS OF ANGLE AND DISTANCE

THE LIMIT OF "WOOD LAKE" AS SHOWN HEREON IS
 THE BEST AVAILABLE EVIDENCE OF THE ORIGINAL
 HIGH WATER MARK OR WATER'S EDGE EXISTING AT
 THE TIME OF THE ORIGINAL SURVEY OF THE TWP
 OF OAKLEY

FITZMAURICE & BOYER
 ONTARIO LAND SURVEYORS
 BRACEBRIDGE, ONTARIO
 FILE - 3166

DRAWN BY - SMC
 CHECKED BY -

*** PART 5 STAYED IN TOWNSHIP NAME ORIGINAL SHORE ROAD ALLOWANCES**

*** RIGHT AWAY IS PROPERTY**

9587

1:10,000
 PLAN 35R-9587
 DATE: JULY 16, 1984
 APPROVED: [Signature]
 SUPERVISOR OF HIGHWAYS
 DISTRICT OF BRACEBRIDGE

NO.	DATE	DESCRIPTION
1	1984	PRELIMINARY PLAN
2	1984	REVISED PLAN
3	1984	REVISED PLAN
4	1984	REVISED PLAN
5	1984	REVISED PLAN
6	1984	REVISED PLAN
7	1984	REVISED PLAN
8	1984	REVISED PLAN
9	1984	REVISED PLAN
10	1984	REVISED PLAN



PLAN OF SUBDIVISION
 PART OF LOT 19, CONCESSION 6
 PART OF THE ORIGINAL SHORE ROAD ALLOWANCE FROM PART
 AND PART OF THE ORIGINAL SHORE ROAD ALLOWANCE IN
 FRONT OF THE ORIGINAL ROAD ALLOWANCE BETWEEN
 CONCESSIONS 6 & 7 IN FRONT OF LOT 19
 TOWNSHIP OF OAKLEY (now in the)
 TOWN OF BRACEBRIDGE
 DISTRICT MUNICIPALITY OF MANSKOKA
 COOTE AND JACKSON LIMITED 1984
 SCALE: 1 INCH = 40 FEET

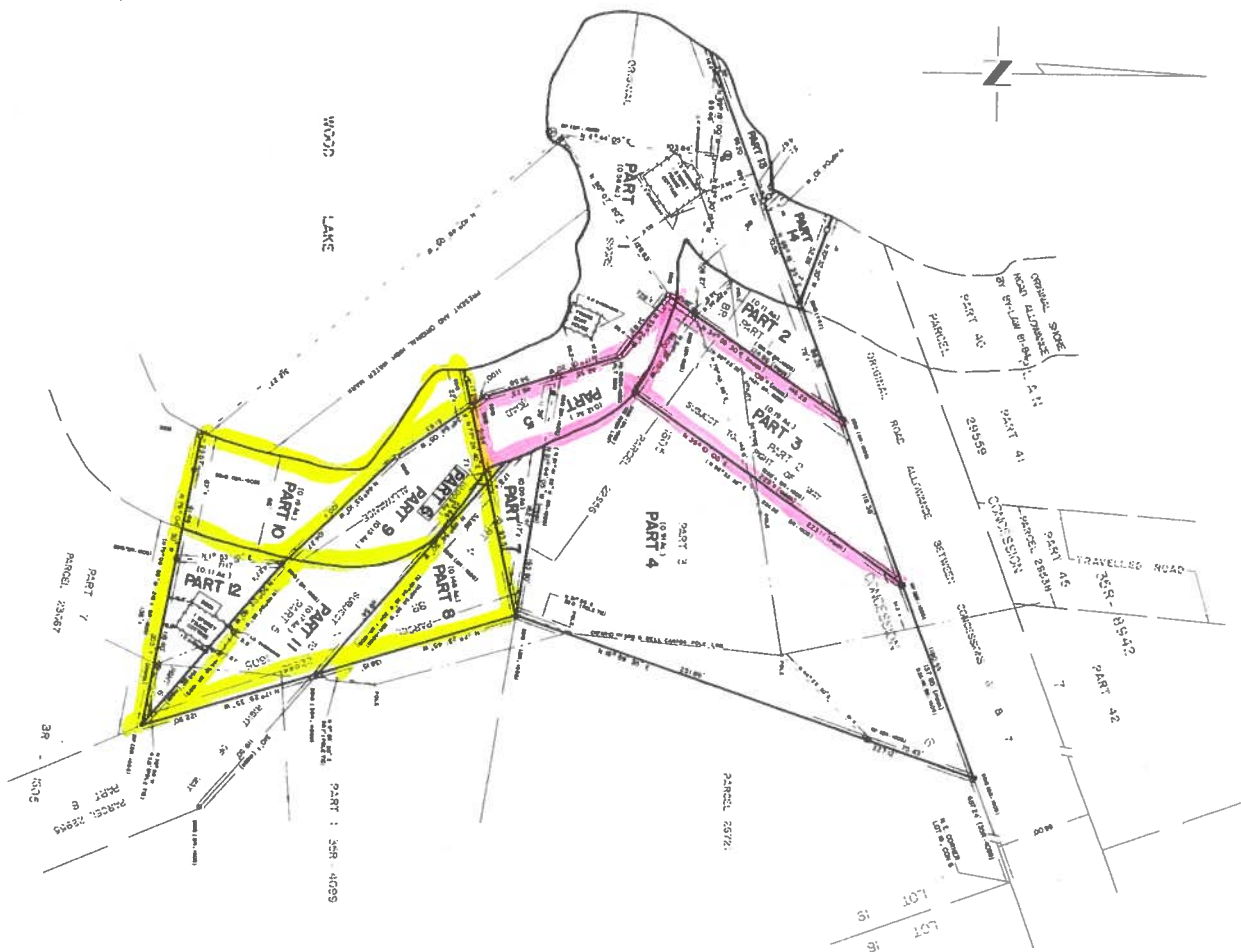


TABLE SHOWING THE AREA OF

Lot No.	Area (Acres)	Area (Sq. Ft.)
1	0.0000	0.0000
2	0.0000	0.0000
3	0.0000	0.0000
4	0.0000	0.0000
5	0.0000	0.0000
6	0.0000	0.0000
7	0.0000	0.0000
8	0.0000	0.0000
9	0.0000	0.0000
10	0.0000	0.0000
11	0.0000	0.0000
12	0.0000	0.0000

LEGEND
 DASHED LINE AND ARROWS AND ARE REFERRED TO THE LATTER PART
 AS SHOWN ON SAID PLAN (SEEING A REFERENCE TO H. 2 19 84)
 1. DASHED LINE AND ARROWS
 2. DASHED LINE AND ARROWS
 3. DASHED LINE AND ARROWS
 4. DASHED LINE AND ARROWS
 5. DASHED LINE AND ARROWS
 6. DASHED LINE AND ARROWS
 7. DASHED LINE AND ARROWS
 8. DASHED LINE AND ARROWS
 9. DASHED LINE AND ARROWS
 10. DASHED LINE AND ARROWS
 11. DASHED LINE AND ARROWS
 12. DASHED LINE AND ARROWS
 13. DASHED LINE AND ARROWS
 14. DASHED LINE AND ARROWS
 15. DASHED LINE AND ARROWS
 16. DASHED LINE AND ARROWS
 17. DASHED LINE AND ARROWS
 18. DASHED LINE AND ARROWS
 19. DASHED LINE AND ARROWS
 20. DASHED LINE AND ARROWS
 21. DASHED LINE AND ARROWS
 22. DASHED LINE AND ARROWS
 23. DASHED LINE AND ARROWS
 24. DASHED LINE AND ARROWS
 25. DASHED LINE AND ARROWS
 26. DASHED LINE AND ARROWS
 27. DASHED LINE AND ARROWS
 28. DASHED LINE AND ARROWS
 29. DASHED LINE AND ARROWS
 30. DASHED LINE AND ARROWS
 31. DASHED LINE AND ARROWS
 32. DASHED LINE AND ARROWS
 33. DASHED LINE AND ARROWS
 34. DASHED LINE AND ARROWS
 35. DASHED LINE AND ARROWS
 36. DASHED LINE AND ARROWS
 37. DASHED LINE AND ARROWS
 38. DASHED LINE AND ARROWS
 39. DASHED LINE AND ARROWS
 40. DASHED LINE AND ARROWS
 41. DASHED LINE AND ARROWS
 42. DASHED LINE AND ARROWS
 43. DASHED LINE AND ARROWS
 44. DASHED LINE AND ARROWS
 45. DASHED LINE AND ARROWS
 46. DASHED LINE AND ARROWS
 47. DASHED LINE AND ARROWS
 48. DASHED LINE AND ARROWS
 49. DASHED LINE AND ARROWS
 50. DASHED LINE AND ARROWS
 51. DASHED LINE AND ARROWS
 52. DASHED LINE AND ARROWS
 53. DASHED LINE AND ARROWS
 54. DASHED LINE AND ARROWS
 55. DASHED LINE AND ARROWS
 56. DASHED LINE AND ARROWS
 57. DASHED LINE AND ARROWS
 58. DASHED LINE AND ARROWS
 59. DASHED LINE AND ARROWS
 60. DASHED LINE AND ARROWS
 61. DASHED LINE AND ARROWS
 62. DASHED LINE AND ARROWS
 63. DASHED LINE AND ARROWS
 64. DASHED LINE AND ARROWS
 65. DASHED LINE AND ARROWS
 66. DASHED LINE AND ARROWS
 67. DASHED LINE AND ARROWS
 68. DASHED LINE AND ARROWS
 69. DASHED LINE AND ARROWS
 70. DASHED LINE AND ARROWS
 71. DASHED LINE AND ARROWS
 72. DASHED LINE AND ARROWS
 73. DASHED LINE AND ARROWS
 74. DASHED LINE AND ARROWS
 75. DASHED LINE AND ARROWS
 76. DASHED LINE AND ARROWS
 77. DASHED LINE AND ARROWS
 78. DASHED LINE AND ARROWS
 79. DASHED LINE AND ARROWS
 80. DASHED LINE AND ARROWS
 81. DASHED LINE AND ARROWS
 82. DASHED LINE AND ARROWS
 83. DASHED LINE AND ARROWS
 84. DASHED LINE AND ARROWS
 85. DASHED LINE AND ARROWS
 86. DASHED LINE AND ARROWS
 87. DASHED LINE AND ARROWS
 88. DASHED LINE AND ARROWS
 89. DASHED LINE AND ARROWS
 90. DASHED LINE AND ARROWS
 91. DASHED LINE AND ARROWS
 92. DASHED LINE AND ARROWS
 93. DASHED LINE AND ARROWS
 94. DASHED LINE AND ARROWS
 95. DASHED LINE AND ARROWS
 96. DASHED LINE AND ARROWS
 97. DASHED LINE AND ARROWS
 98. DASHED LINE AND ARROWS
 99. DASHED LINE AND ARROWS
 100. DASHED LINE AND ARROWS

COOTE AND JACKSON LIMITED
 ONTARIO LAND SURVEYORS
 1000 BAYVIEW AVE. TORONTO, ONT. M2W 1G1
 [Signature]
 JOHN W. HELD GLE

1. I enclose the plan to be submitted under the Planning Act.
 DATE: MAY 9, 1984
 JOHN W. RIDLEY
 JOHN W. RIDLEY
 SUPERVISOR OF THE TOWNSHIP OF OAKLEY

PLAN 35R-9587
 DATE: JULY 16, 1984
 JOHN W. RIDLEY
 SUPERVISOR OF THE TOWNSHIP OF OAKLEY

CAUTION: THIS PLAN IS NOT A PLAN OF SUBDIVISION UNDER THE Planning Act.

W.P.S. - 10,600

DATE	APPROVED	BY
JULY 16, 1984	John W. Ridley	Supervisor of the Township of Oakley
	John W. Ridley	Supervisor of the Township of Oakley

DATE	APPROVED	BY
	John W. Ridley	Supervisor of the Township of Oakley

PLAN OF SUBDIVISION OF
 PART OF LOT 19, CONCESSION 6
 AND PART OF THE ORIGINAL SHORE ROAD ALLOWANCE IN
 FRONT OF THE ORIGINAL SHORE ROAD ALLOWANCE BETWEEN
 CONCESSIONS 6 & 7 IN FRONT OF LOT 19
 TOWNSHIP OF OAKLEY (NOW IN THE)
 DISTRICT MUNICIPALITY OF MUSKOKA
 COOTE AND JACKSON LIMITED
 SCALE: 1" = 40 FEET

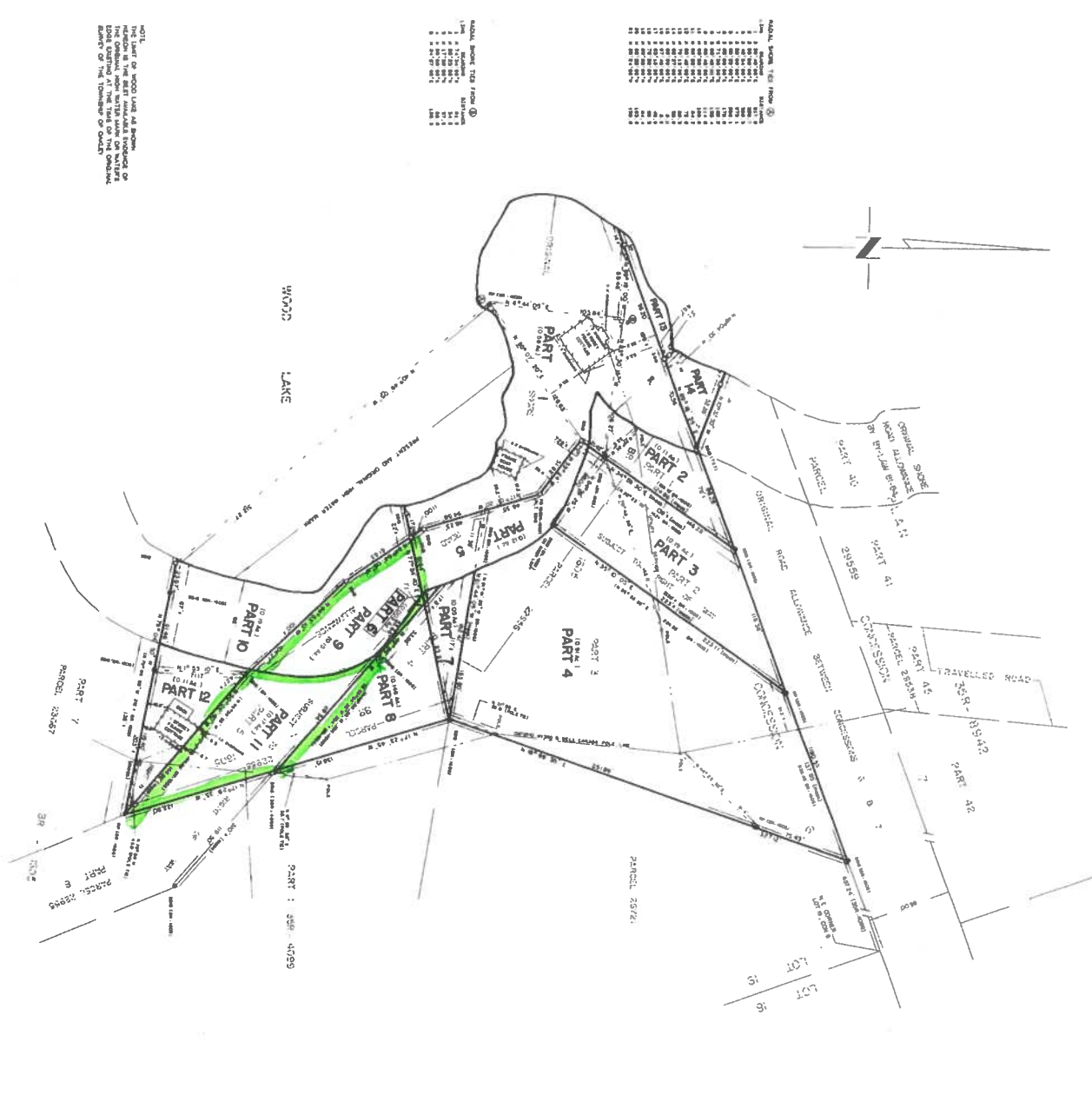


TABLE SHOWING THE FROM TO

FROM	TO	BEARING	DISTANCE
1	2	N 89° 00' 00" W	100.00
2	3	S 89° 00' 00" W	100.00
3	4	N 89° 00' 00" W	100.00
4	5	S 89° 00' 00" W	100.00
5	6	N 89° 00' 00" W	100.00
6	7	S 89° 00' 00" W	100.00
7	8	N 89° 00' 00" W	100.00
8	9	S 89° 00' 00" W	100.00
9	10	N 89° 00' 00" W	100.00
10	11	S 89° 00' 00" W	100.00
11	12	N 89° 00' 00" W	100.00
12	13	S 89° 00' 00" W	100.00
13	14	N 89° 00' 00" W	100.00
14	15	S 89° 00' 00" W	100.00
15	16	N 89° 00' 00" W	100.00
16	17	S 89° 00' 00" W	100.00
17	18	N 89° 00' 00" W	100.00
18	19	S 89° 00' 00" W	100.00
19	20	N 89° 00' 00" W	100.00
20	21	S 89° 00' 00" W	100.00
21	22	N 89° 00' 00" W	100.00
22	23	S 89° 00' 00" W	100.00
23	24	N 89° 00' 00" W	100.00
24	25	S 89° 00' 00" W	100.00
25	26	N 89° 00' 00" W	100.00
26	27	S 89° 00' 00" W	100.00
27	28	N 89° 00' 00" W	100.00
28	29	S 89° 00' 00" W	100.00
29	30	N 89° 00' 00" W	100.00
30	31	S 89° 00' 00" W	100.00
31	32	N 89° 00' 00" W	100.00
32	33	S 89° 00' 00" W	100.00
33	34	N 89° 00' 00" W	100.00
34	35	S 89° 00' 00" W	100.00
35	36	N 89° 00' 00" W	100.00
36	37	S 89° 00' 00" W	100.00
37	38	N 89° 00' 00" W	100.00
38	39	S 89° 00' 00" W	100.00
39	40	N 89° 00' 00" W	100.00
40	41	S 89° 00' 00" W	100.00
41	42	N 89° 00' 00" W	100.00
42	43	S 89° 00' 00" W	100.00
43	44	N 89° 00' 00" W	100.00
44	45	S 89° 00' 00" W	100.00
45	46	N 89° 00' 00" W	100.00
46	47	S 89° 00' 00" W	100.00
47	48	N 89° 00' 00" W	100.00
48	49	S 89° 00' 00" W	100.00
49	50	N 89° 00' 00" W	100.00
50	51	S 89° 00' 00" W	100.00
51	52	N 89° 00' 00" W	100.00
52	53	S 89° 00' 00" W	100.00
53	54	N 89° 00' 00" W	100.00
54	55	S 89° 00' 00" W	100.00
55	56	N 89° 00' 00" W	100.00
56	57	S 89° 00' 00" W	100.00
57	58	N 89° 00' 00" W	100.00
58	59	S 89° 00' 00" W	100.00
59	60	N 89° 00' 00" W	100.00
60	61	S 89° 00' 00" W	100.00
61	62	N 89° 00' 00" W	100.00
62	63	S 89° 00' 00" W	100.00
63	64	N 89° 00' 00" W	100.00
64	65	S 89° 00' 00" W	100.00
65	66	N 89° 00' 00" W	100.00
66	67	S 89° 00' 00" W	100.00
67	68	N 89° 00' 00" W	100.00
68	69	S 89° 00' 00" W	100.00
69	70	N 89° 00' 00" W	100.00
70	71	S 89° 00' 00" W	100.00
71	72	N 89° 00' 00" W	100.00
72	73	S 89° 00' 00" W	100.00
73	74	N 89° 00' 00" W	100.00
74	75	S 89° 00' 00" W	100.00
75	76	N 89° 00' 00" W	100.00
76	77	S 89° 00' 00" W	100.00
77	78	N 89° 00' 00" W	100.00
78	79	S 89° 00' 00" W	100.00
79	80	N 89° 00' 00" W	100.00
80	81	S 89° 00' 00" W	100.00
81	82	N 89° 00' 00" W	100.00
82	83	S 89° 00' 00" W	100.00
83	84	N 89° 00' 00" W	100.00
84	85	S 89° 00' 00" W	100.00
85	86	N 89° 00' 00" W	100.00
86	87	S 89° 00' 00" W	100.00
87	88	N 89° 00' 00" W	100.00
88	89	S 89° 00' 00" W	100.00
89	90	N 89° 00' 00" W	100.00
90	91	S 89° 00' 00" W	100.00
91	92	N 89° 00' 00" W	100.00
92	93	S 89° 00' 00" W	100.00
93	94	N 89° 00' 00" W	100.00
94	95	S 89° 00' 00" W	100.00
95	96	N 89° 00' 00" W	100.00
96	97	S 89° 00' 00" W	100.00
97	98	N 89° 00' 00" W	100.00
98	99	S 89° 00' 00" W	100.00
99	100	N 89° 00' 00" W	100.00

LEGEND

SHADED AREAS APPROVED AND ARE REFERRED TO THE EASTERN PART OF THE ORIGINAL SHORE ROAD ALLOWANCE AS SHOWN ON SAID PLAN.

1. IDENTIFIED UNDEVELOPED PARTS

2. IDENTIFIED DEVELOPED PARTS

3. DISTRICTS FRONTED FROM SAID

4. DISTRICTS FRONTED FROM SAID

5. DISTRICTS FRONTED FROM SAID

6. DISTRICTS FRONTED FROM SAID

7. DISTRICTS FRONTED FROM SAID

8. DISTRICTS FRONTED FROM SAID

9. DISTRICTS FRONTED FROM SAID

10. DISTRICTS FRONTED FROM SAID

11. DISTRICTS FRONTED FROM SAID

12. DISTRICTS FRONTED FROM SAID

13. DISTRICTS FRONTED FROM SAID

14. DISTRICTS FRONTED FROM SAID

15. DISTRICTS FRONTED FROM SAID

16. DISTRICTS FRONTED FROM SAID

17. DISTRICTS FRONTED FROM SAID

18. DISTRICTS FRONTED FROM SAID

19. DISTRICTS FRONTED FROM SAID

20. DISTRICTS FRONTED FROM SAID

21. DISTRICTS FRONTED FROM SAID

22. DISTRICTS FRONTED FROM SAID

23. DISTRICTS FRONTED FROM SAID

24. DISTRICTS FRONTED FROM SAID

25. DISTRICTS FRONTED FROM SAID

26. DISTRICTS FRONTED FROM SAID

27. DISTRICTS FRONTED FROM SAID

28. DISTRICTS FRONTED FROM SAID

29. DISTRICTS FRONTED FROM SAID

30. DISTRICTS FRONTED FROM SAID

31. DISTRICTS FRONTED FROM SAID

32. DISTRICTS FRONTED FROM SAID

33. DISTRICTS FRONTED FROM SAID

34. DISTRICTS FRONTED FROM SAID

35. DISTRICTS FRONTED FROM SAID

36. DISTRICTS FRONTED FROM SAID

37. DISTRICTS FRONTED FROM SAID

38. DISTRICTS FRONTED FROM SAID

39. DISTRICTS FRONTED FROM SAID

40. DISTRICTS FRONTED FROM SAID

41. DISTRICTS FRONTED FROM SAID

42. DISTRICTS FRONTED FROM SAID

43. DISTRICTS FRONTED FROM SAID

44. DISTRICTS FRONTED FROM SAID

45. DISTRICTS FRONTED FROM SAID

46. DISTRICTS FRONTED FROM SAID

47. DISTRICTS FRONTED FROM SAID

48. DISTRICTS FRONTED FROM SAID

49. DISTRICTS FRONTED FROM SAID

50. DISTRICTS FRONTED FROM SAID

51. DISTRICTS FRONTED FROM SAID

52. DISTRICTS FRONTED FROM SAID

53. DISTRICTS FRONTED FROM SAID

54. DISTRICTS FRONTED FROM SAID

55. DISTRICTS FRONTED FROM SAID

56. DISTRICTS FRONTED FROM SAID

57. DISTRICTS FRONTED FROM SAID

58. DISTRICTS FRONTED FROM SAID

59. DISTRICTS FRONTED FROM SAID

60. DISTRICTS FRONTED FROM SAID

61. DISTRICTS FRONTED FROM SAID

62. DISTRICTS FRONTED FROM SAID

63. DISTRICTS FRONTED FROM SAID

64. DISTRICTS FRONTED FROM SAID

65. DISTRICTS FRONTED FROM SAID

66. DISTRICTS FRONTED FROM SAID

67. DISTRICTS FRONTED FROM SAID

68. DISTRICTS FRONTED FROM SAID

69. DISTRICTS FRONTED FROM SAID

70. DISTRICTS FRONTED FROM SAID

71. DISTRICTS FRONTED FROM SAID

72. DISTRICTS FRONTED FROM SAID

73. DISTRICTS FRONTED FROM SAID

74. DISTRICTS FRONTED FROM SAID

75. DISTRICTS FRONTED FROM SAID

76. DISTRICTS FRONTED FROM SAID

77. DISTRICTS FRONTED FROM SAID

78. DISTRICTS FRONTED FROM SAID

79. DISTRICTS FRONTED FROM SAID

80. DISTRICTS FRONTED FROM SAID

81. DISTRICTS FRONTED FROM SAID

82. DISTRICTS FRONTED FROM SAID

83. DISTRICTS FRONTED FROM SAID

84. DISTRICTS FRONTED FROM SAID

85. DISTRICTS FRONTED FROM SAID

86. DISTRICTS FRONTED FROM SAID

87. DISTRICTS FRONTED FROM SAID

88. DISTRICTS FRONTED FROM SAID

89. DISTRICTS FRONTED FROM SAID

90. DISTRICTS FRONTED FROM SAID

91. DISTRICTS FRONTED FROM SAID

92. DISTRICTS FRONTED FROM SAID

93. DISTRICTS FRONTED FROM SAID

94. DISTRICTS FRONTED FROM SAID

95. DISTRICTS FRONTED FROM SAID

96. DISTRICTS FRONTED FROM SAID

97. DISTRICTS FRONTED FROM SAID

98. DISTRICTS FRONTED FROM SAID

99. DISTRICTS FRONTED FROM SAID

100. DISTRICTS FRONTED FROM SAID

COOTE AND JACKSON LIMITED
 ONTARIO LAND SURVEYORS
 100 KING STREET WEST
 TORONTO, ONTARIO M5X 1C4
 JOHN W. RIDLEY
 JOHN W. RIDLEY

1605

PLAN BR-1605

APPROVED - Oct. 27, 1969

EXAMINER OF SURVEYS

PLAN BR - 1605

RECORDED - 30 Oct, 1969

RE-ENTERED AT REG. 2386

RE-ENTERED AT REG. 2386

RE-ENTERED AT REG. 2386

PLAN AND FIELD NOTES OF SURVEY OF
 PART OF LOT 19, CON VI
 TOWNSHIP OF OAKLEY
 DISTRICT OF MUSKOKA
 SCALE 1" = 60'
 M W FITZMAURICE OLS 1969

NOTES
 DISTANCES ARE IN FEET AND DECIMALS THEREOF

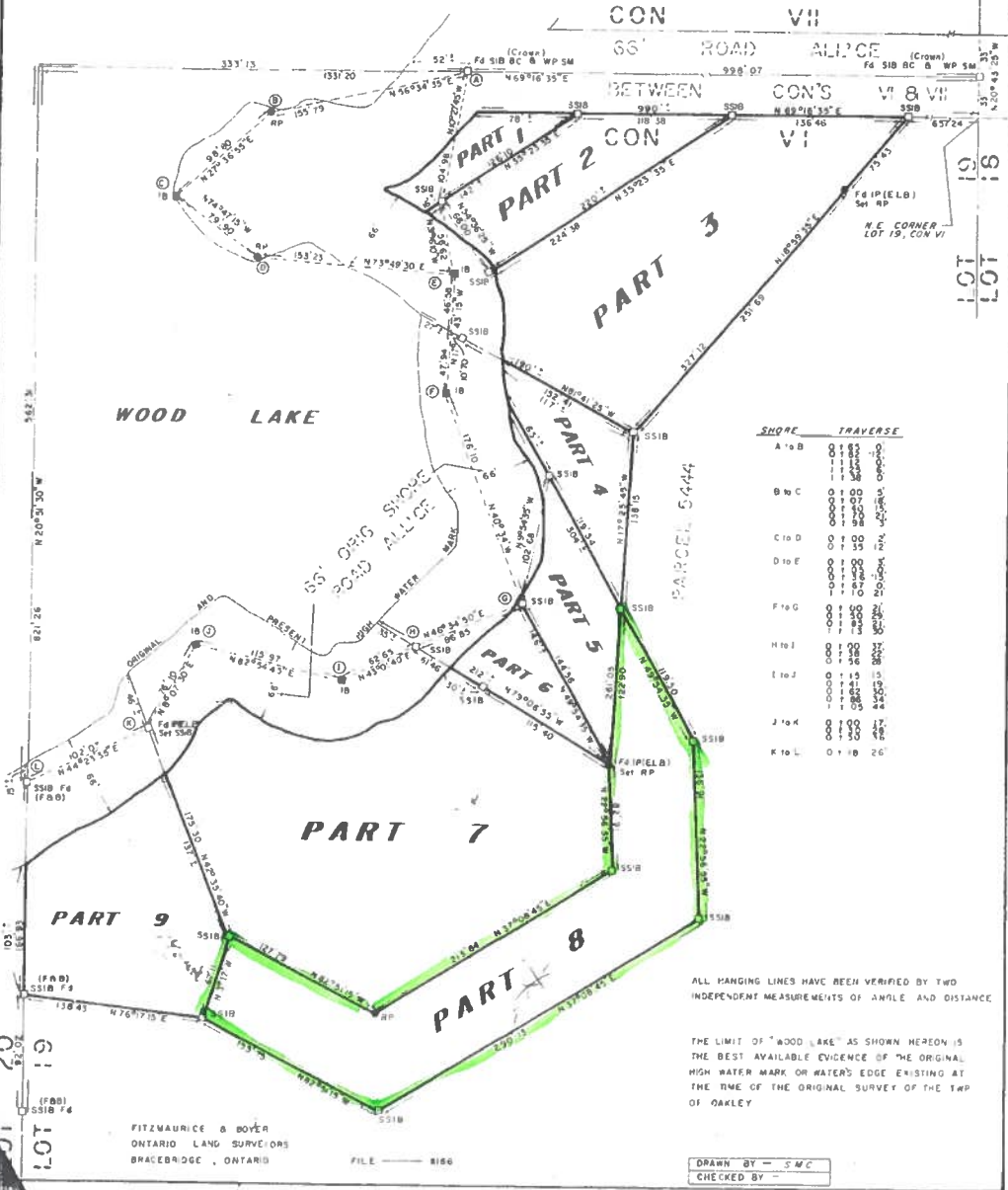
BEARINGS ARE ASTRONOMIC AND REFERRED TO THE CENTRE
 LINE OF THE ROAD ALL'CE BETWEEN CON'S VI & VII IN FRONT
 OF LOT 19, WHICH HAS AN ASSUMED BEARING OF N 69° 16' 35" E
 AS SHOWN ON A DEPT. OF LANDS AND FORESTS TOWN RETRAIMENT
 PLAN (Their file 169425 - Year 1964)

SURVEYOR'S CERTIFICATE:

- I HEREBY CERTIFY THAT
- THIS SURVEY AND PLAN ARE CORRECT AND IN ACCORDANCE WITH THE SURVEYS ACT AND THE LAND TITLES ACT AND THE REGULATIONS MADE THEREUNDER.
- I WAS PRESENT AT AND DID PERSONALLY SUPERVISE THE SURVEY REPRESENTED BY THIS PLAN.
- THIS PLAN CONTAINS A TRUE COPY OF THE FIELD NOTES OF SURVEY.
- THE SURVEY WAS COMPLETED ON THE 30th DAY OF APRIL, 1969.

- 5518 IRON BAR (1" x 1" x 24")
- 310 IRON BAR (1" x 1" x 48")
- 10 IRON BAR (5/8" x 1" x 24")
- 10 IRON PIPE
- RP ROCK PLUG 1/16" Ø WITH CAP AND BOLT
- WP SM WOOD POST & STONE MOUND
- BC BRONZE CAP
- F & B FITZMAURICE & BOYER OLS
- E & B EL BURGESS OLS
- Fd FOUND

MAY 21/69 *9/11 same W. Fitzmaurice*
 ONTARIO LAND SURVEYOR



ALL HANGING LINES HAVE BEEN VERIFIED BY TWO INDEPENDENT MEASUREMENTS OF ANGLE AND DISTANCE

THE LIMIT OF "WOOD LAKE" AS SHOWN HEREON IS THE BEST AVAILABLE EVIDENCE OF THE ORIGINAL HIGH WATER MARK OR WATER'S EDGE EXISTING AT THE TIME OF THE ORIGINAL SURVEY OF THE TWP OF OAKLEY

FITZMAURICE & BOYER
 ONTARIO LAND SURVEYORS
 BRACEBRIDGE, ONTARIO

DRAWN BY - SMC
 CHECKED BY -