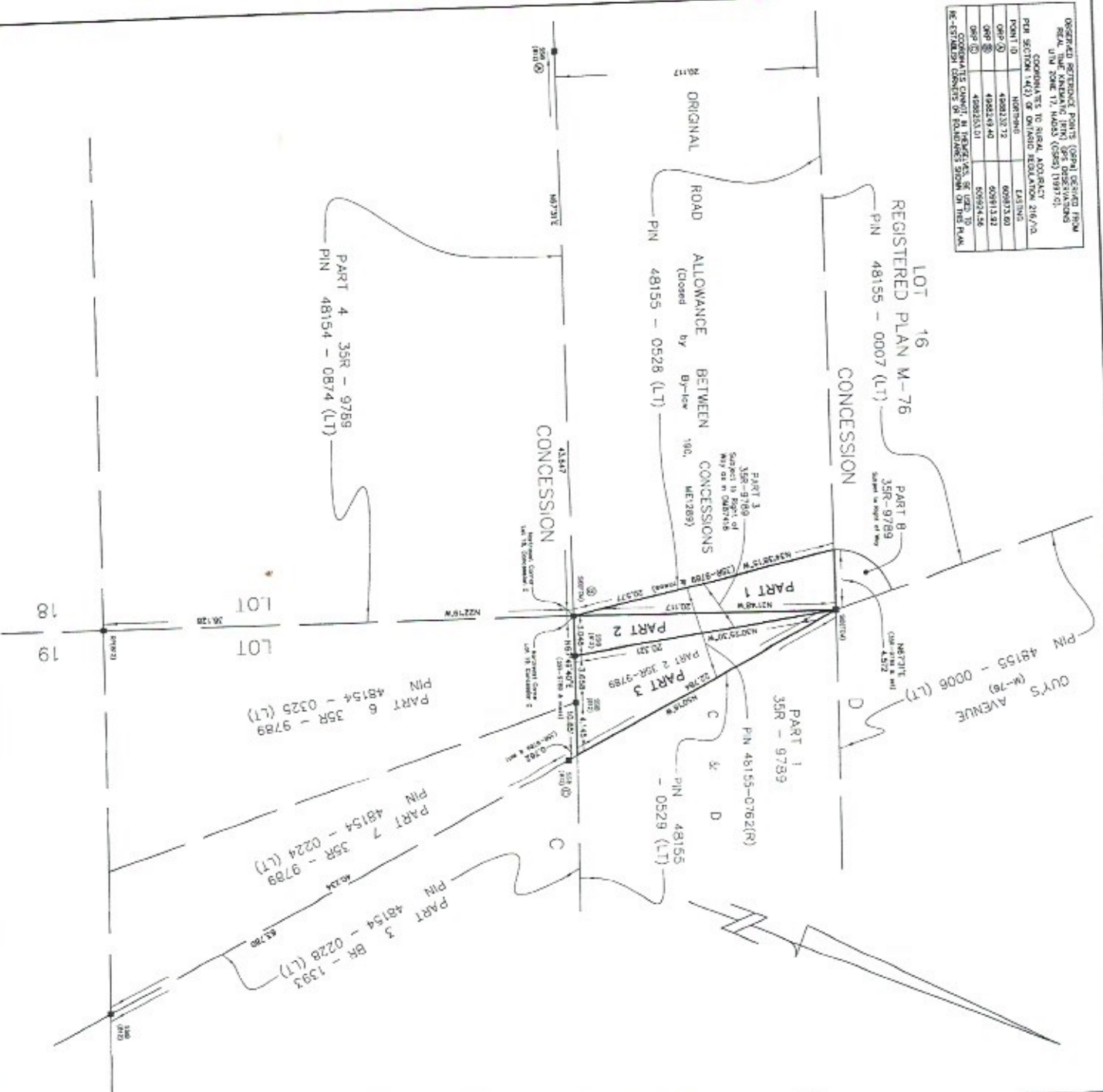


DESIGNED SETBACK POINT (SPR) DESIGN FROM REAL TIME NAVIGATION (RTN) GPS DATA	
COORDINATES TO NAD83 (CONCAT) PIN	48155-0528
CONCATENATED PIN (CONCAT) PIN	48155-0528
POINT ID	48155-0528
COORDINATES TO NAD83 (CONCAT) PIN	48155-0528
POINT ID	48155-0528
COORDINATES TO NAD83 (CONCAT) PIN	48155-0528
POINT ID	48155-0528
COORDINATES TO NAD83 (CONCAT) PIN	48155-0528
POINT ID	48155-0528



I REQUIRE THIS PLAN TO BE DEPOSITED
 1. UNDER THE REGISTRY ACT.
 DATE: JULY 10, 2015
 SURVEYOR: W. JEMMETT, O.L.S.

RECEIVED AND DEPOSED
 JEMMETT & SHAW
 DISTRICT CLERK FOR THE DIVISION OF MUSKOKA

PART	LOCATION	SRN	AREA
1	Part of the Original Road Allowance between Concessions C & D in front of Lot 18	48155-0528	48.0 m ²
2	Part of the Original Road Allowance between Concessions C & D in front of Lot 19	48155-0528	50.8 m ²
3	Part of the Original Road Allowance between Concessions C & D in front of Lot 17	48155-0528	76.5 m ²

PLAN OF SURVEY OF
 PART OF THE ORIGINAL ROAD ALLOWANCE
 BETWEEN CONCESSION C & D IN FRONT OF
 LOTS 18 & 19, CONCESSIONS C & D
 (Closed by By-Law 190, MET269)
 GEOGRAPHIC TOWNSHIP OF MEDORA
 TOWNSHIP OF MUSKOKA LAKES
 DISTRICT MUNICIPALITY OF MUSKOKA
 COOTE, HELEY, JEMMETT LIMITED
 SCALE 1 : 200

LEGEND

- MONUMENT FOUND
- STANDARD BORN BAR
- SHORT STANDARD BORN BAR
- MEASUREMENT
- N.P. LONDON O.L.S.
- P.O. MONTICLOM O.L.S.

BEARINGS AND DISTANCES FROM OBSERVED RETROFIT POINTS
 (NAD83) BY (1997-01)
 HAD (1997-01)
 DISTANCES ON THIS PLAN ARE HORIZONTAL, GRADE DISTANCES AND CAN
 BE USED FOR CALCULATING THE AREA OF THE ROAD ALLOWANCE
 CHAINED SCALE FACTOR OF DEPARTURE.
 FOR BEARING COMPARISONS, A COMPENSATED BEARING OF 137° WAS
 APPLIED TO 35R-1789 TO CORRECT TO 514 BEARINGS

SURVEYOR'S CERTIFICATE

1. CERTIFY THAT
 1 - THIS SURVEY AND PLAN ARE CORRECT AND IN ACCORDANCE WITH THE SURVEY ACT,
 THE SURVEYORS ACT AND THE REGISTRY ACT AND THE REGULATIONS MADE
 UNDER THEM
 2 - THE SURVEY WAS COMPLETED ON THE 9th DAY OF JULY, 2015
 AT WY, N.S.
 BRIMMINGDGE, ONTARIO

COOTE, HELEY, JEMMETT LIMITED
 ONTARIO LAND SURVEYORS
 Website: www.onlandsurveyors.com
 137 Kitch Road
 Brimmingdge, Ontario
 M7S 1S1
 Phone: 705-644-4611
 Fax: 705-644-1440
 Email: info@onlandsurveyors.com
 www.onlandsurveyors.com