

PLAN OF SURVEY OF  
**PART OF LOT 32, CONCESSION I**  
**TOWNSHIP OF MEDORA now in the**  
**TOWNSHIP OF MUSKOKA LAKES**  
 DISTRICT MUNICIPALITY OF MUSKOKA  
 COOTE, JACKSON & HILEY LIMITED  
 1988

SCALE - 1" = 50'

I REQUIRE THIS PLAN TO BE DEPOSITED UNDER THE LAND TITLES ACT.

DATE: SEPTEMBER 26, 1988

*B.D. Coote*  
 B.D. COOTE, O.L.S.

CAUTION: THIS PLAN IS NOT A PLAN OF SUBDIVISION WITHIN THE MEANING OF THE PLANNING ACT.

**PLAN 35R-12134**

RECEIVED AND DEPOSITED

DATE: **SEPT. 30, 1988**

*D. Stewart*  
 DEPUTY LAND REGISTRAR FOR THE LAND TITLES DIVISION OF MUSKOKA

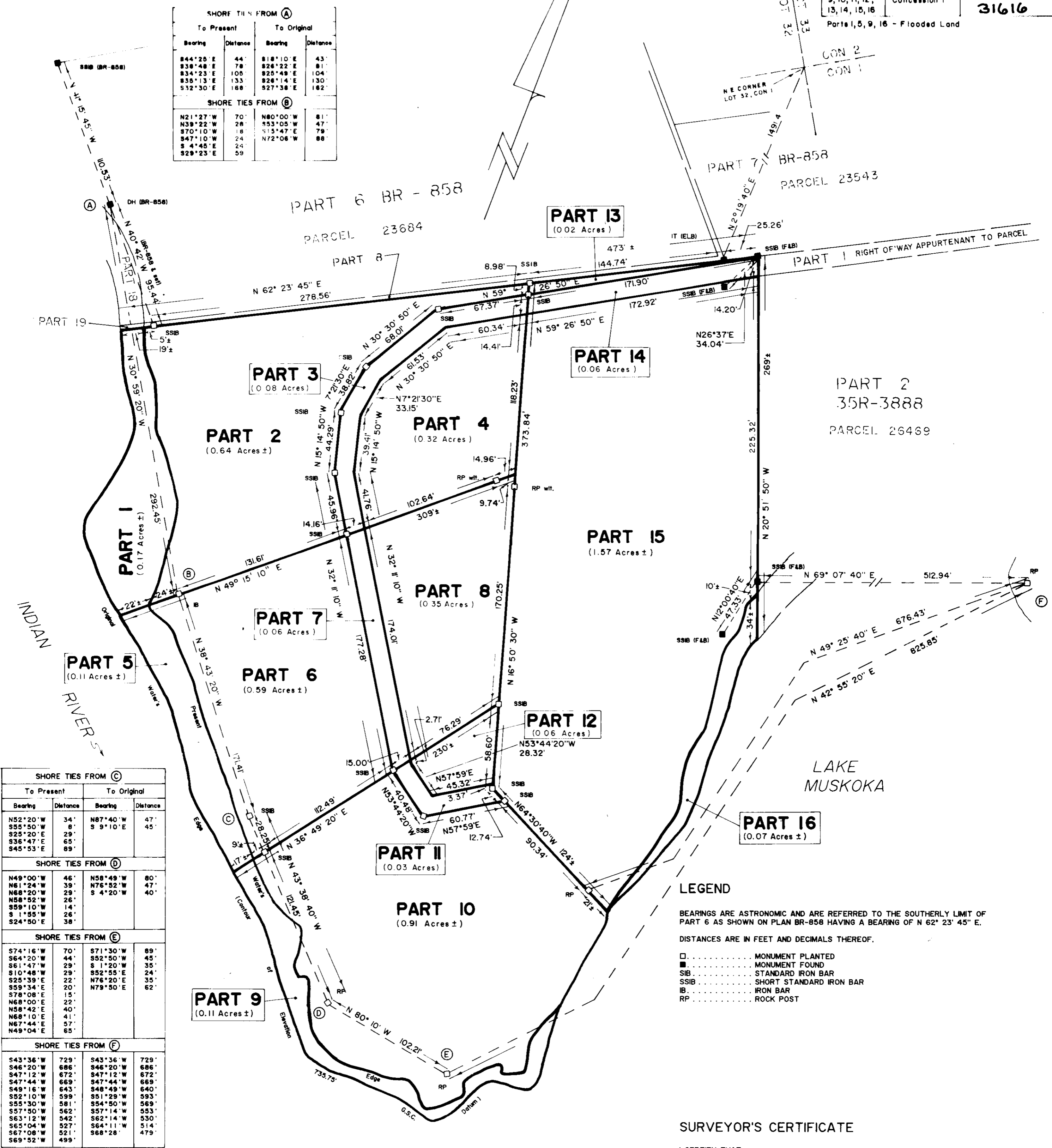
SCHEDULE

Parts 1, 2, 3, 4, 5, 6, 7, 8, 9, 10, 11, 12, 13, 14, 15, 16	Part of Lot 32 Concession I	All of Parcel 31616
Parts 1, 5, 9, 16 - Flooded Land		

SHORE TIES FROM (A)			
To Present		To Original	
Bearing	Distance	Bearing	Distance
S44°25'E	44'	S18°10'E	43'
S38°48'E	78'	S28°22'E	81'
S34°23'E	105'	S25°49'E	104'
S35°13'E	133'	S26°14'E	130'
S32°30'E	168'	S27°38'E	182'

SHORE TIES FROM (B)			
To Present		To Original	
Bearing	Distance	Bearing	Distance
N21°27'W	70'	N80°00'W	81'
N39°22'W	28'	S53°05'W	47'
S70°10'W	18'	S15°47'E	79'
S47°10'W	24'	N72°06'W	88'
S4°45'E	24'		
S29°23'E	59'		



SHORE TIES FROM (C)			
To Present		To Original	
Bearing	Distance	Bearing	Distance
N52°20'W	34'	N87°40'W	47'
S55°50'W	8'	S9°10'E	45'
S25°20'E	29'		
S36°47'E	65'		
S45°53'E	89'		

SHORE TIES FROM (D)			
To Present		To Original	
Bearing	Distance	Bearing	Distance
N49°00'W	46'	N58°49'W	80'
N61°24'W	39'	N76°52'W	47'
N68°20'W	29'	S4°20'W	40'
N58°52'W	26'		
S59°10'W	14'		
S1°55'W	26'		
S24°50'E	38'		

SHORE TIES FROM (E)			
To Present		To Original	
Bearing	Distance	Bearing	Distance
S74°16'W	70'	S71°30'W	89'
S64°20'W	44'	S52°50'W	45'
S61°47'W	29'	S1°20'W	35'
S10°48'W	29'	S52°55'E	24'
S25°39'E	22'	N76°20'E	35'
S59°34'E	20'	N79°50'E	62'
S78°08'E	15'		
N68°00'E	22'		
N58°42'E	40'		
N68°10'E	41'		
N67°44'E	57'		
N49°04'E	65'		

SHORE TIES FROM (F)			
To Present		To Original	
Bearing	Distance	Bearing	Distance
S43°36'W	729'	S43°36'W	729'
S46°20'W	686'	S48°20'W	686'
S47°12'W	672'	S47°12'W	672'
S47°44'W	669'	S47°44'W	669'
S49°16'W	643'	S48°49'W	640'
S52°10'W	599'	S51°29'W	593'
S55°30'W	581'	S54°50'W	569'
S57°50'W	562'	S57°14'W	553'
S63°12'W	542'	S62°14'W	530'
S65°04'W	527'	S64°11'W	514'
S67°08'W	521'	S68°28'W	479'
S69°52'W	499'		

LEGEND

- BEARINGS ARE ASTRONOMIC AND ARE REFERRED TO THE SOUTHERLY LIMIT OF PART 6 AS SHOWN ON PLAN BR-858 HAVING A BEARING OF N 62° 23' 45" E.
- DISTANCES ARE IN FEET AND DECIMALS THEREOF.
- ..... MONUMENT PLANTED
- ..... MONUMENT FOUND
- SIB ..... STANDARD IRON BAR
- SSIB ..... SHORT STANDARD IRON BAR
- IB ..... IRON BAR
- RP ..... ROCK POST

SURVEYOR'S CERTIFICATE

I CERTIFY THAT:  
 1 - THIS SURVEY AND PLAN ARE CORRECT AND IN ACCORDANCE WITH THE SURVEYS ACT AND THE LAND TITLES ACT AND THE REGULATIONS MADE THEREUNDER,  
 2 - THE SURVEY WAS COMPLETED ON THE 21st. DAY OF SEPTEMBER, 1988.

SEPTEMBER 23, 1988  
 BRACEBRIDGE, ONTARIO

*B.D. Coote*  
 B.D. COOTE  
 ONTARIO LAND SURVEYOR

THE LIMIT OF LAKE MUSKOKA AND THE INDIAN RIVER, ESTABLISHED AT GEODETIC CONTOUR OF ELEVATION 735.75' G.S.C. DATUM, AS SHOWN HEREON IS THE BEST AVAILABLE EVIDENCE OF THE ORIGINAL HIGH WATER MARK OR WATER'S EDGE EXISTING AT THE TIME OF THE ORIGINAL SURVEY OF THE TOWNSHIP OF MEDORA.

**COOTE, JACKSON & HILEY LIMITED**  
 ONTARIO LAND SURVEYORS  
 BRACEBRIDGE - HUNTSVILLE

Drawn by: M.B. File: 15345 Plan: 5-PC-B-10