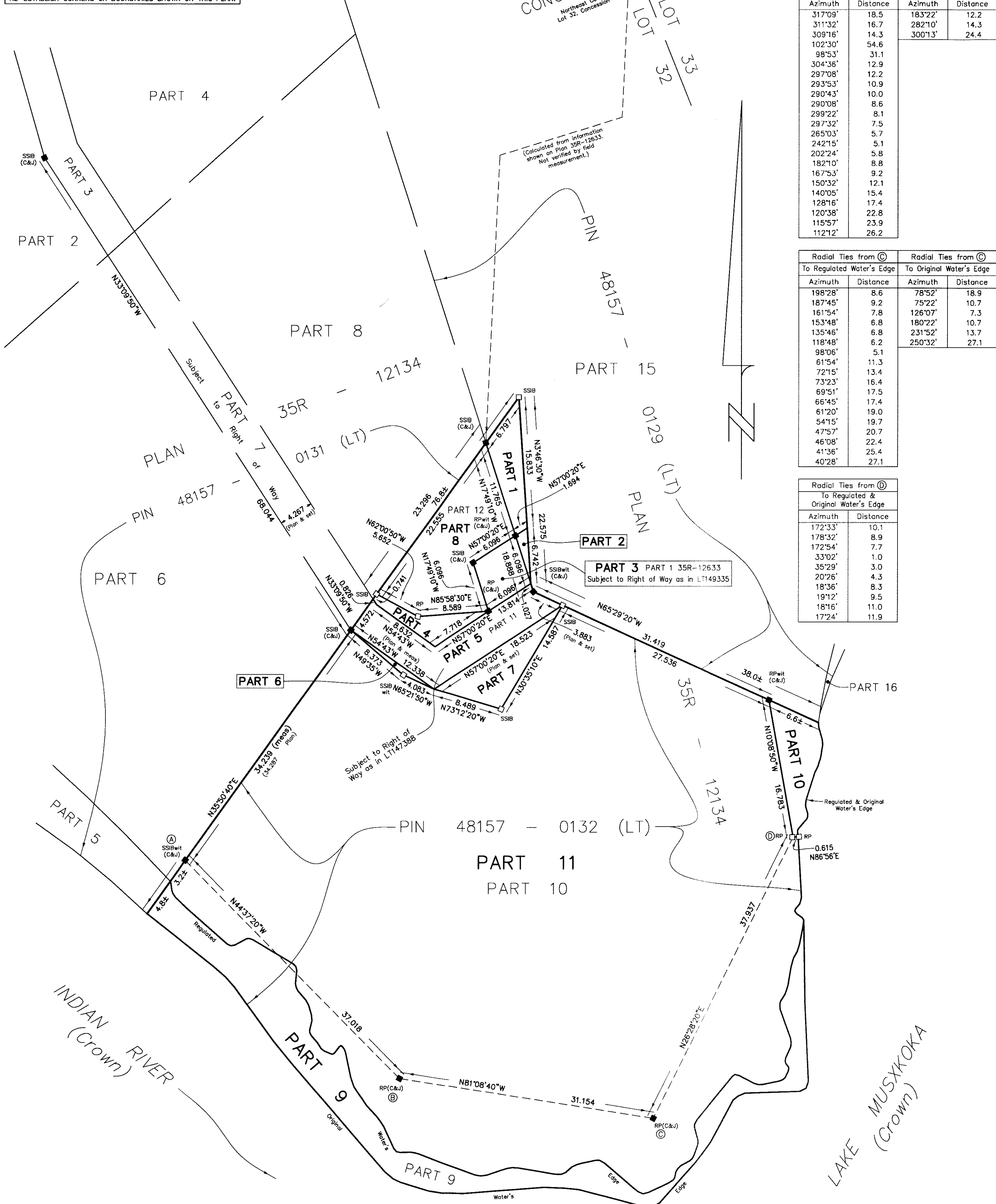


OBSERVED REFERENCE POINTS (ORPs) DERIVED FROM REAL TIME KINEMATIC (RTK) GPS OBSERVATIONS UTM ZONE 17, NAD83 (CSRS) (1997.0).

COORDINATES TO RURAL ACCURACY PER SECTION 14(2) OF ONTARIO REGULATION 216/10.

POINT ID	NORTHING	EASTING
ORP (A)	4994499.58	613204.34
ORP (B)	4994473.23	613230.33
ORP (C)	4994468.42	613261.10

COORDINATES CANNOT, IN THEMSELVES, BE USED TO RE-ESTABLISH CORNERS OR BOUNDARIES SHOWN ON THIS PLAN.



Radial Ties from (A)

To Regulated Water's Edge	Azimuth	Distance
	200°30'	4.3
	175°11'	6.1
	151°39'	11.7
	140°25'	12.2

Radial Ties from (B)

To Regulated Water's Edge	Azimuth	Distance	Radial Ties from (B) To Original Water's Edge	Azimuth	Distance
	317°09'	18.5		183°22'	12.2
	311°32'	16.7		282°10'	14.3
	309°16'	14.3		300°13'	24.4
	102°30'	54.6			
	98°53'	31.1			
	304°36'	12.9			
	297°08'	12.2			
	293°53'	10.9			
	290°43'	10.0			
	290°08'	8.6			
	299°22'	8.1			
	297°32'	7.5			
	265°03'	5.7			
	242°15'	5.1			
	202°24'	5.8			
	182°10'	8.8			
	167°53'	9.2			
	150°32'	12.1			
	140°05'	15.4			
	128°16'	17.4			
	120°38'	22.8			
	115°57'	23.9			
	112°12'	26.2			

Radial Ties from (C)

To Regulated Water's Edge	Azimuth	Distance	Radial Ties from (C) To Original Water's Edge	Azimuth	Distance
	198°28'	8.6		78°52'	18.9
	187°45'	9.2		75°22'	10.7
	161°54'	7.8		126°07'	7.3
	153°48'	6.8		180°22'	10.7
	135°46'	6.8		231°52'	13.7
	118°48'	6.2		250°32'	27.1
	98°06'	5.1			
	61°54'	11.3			
	72°15'	13.4			
	73°23'	16.4			
	69°51'	17.5			
	66°45'	17.4			
	61°20'	19.0			
	54°15'	19.7			
	47°57'	20.7			
	46°08'	22.4			
	41°36'	25.4			
	40°28'	27.1			

Radial Ties from (D)

To Regulated & Original Water's Edge	Azimuth	Distance
	172°33'	10.1
	178°32'	8.9
	172°54'	7.7
	33°02'	1.0
	35°29'	3.0
	20°26'	4.3
	18°36'	8.3
	19°12'	9.5
	18°16'	11.0
	17°24'	11.9

I REQUIRE THIS PLAN TO BE DEPOSITED UNDER THE LAND TITLES ACT.
 DATE: APRIL 24, 2015
 JOHN W. HILEY, O.L.S.

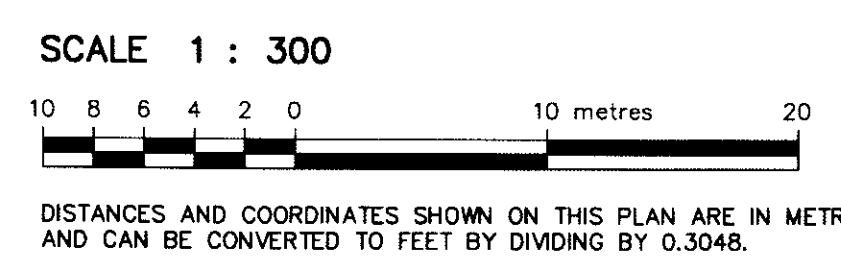
PLAN 35R-24863
 RECEIVED AND DEPOSITED
 DATE: July 1st, 2015
 "MICHELLE OSBORNE"
 REPRESENTATIVE FOR THE LAND REGISTRAR FOR THE LAND TITLES DIVISION OF MUSKOKA

SCHEDULE

PART	LOT	CON.	PIN	AREA
1			Part of 48157-0129(LT)	43.9 m ²
2				5.0 m ²
3				35.9 m ²
4				26.9 m ²
5				114.2 m ²
6	Part of 32	1	All of 48157-0132(LT)	4.6 m ²
7				60.2 m ²
8				167.0 m ²
9				35.3 m ² ±
10				56 m ² ±
11				3642 m ² ±

Part 3 Subject to Right of Way as in LT149335
 Part 5 Subject to Right of Way as in LT147388

**PLAN OF SURVEY OF
 PART OF LOT 32, CONCESSION 1
 GEOGRAPHIC TOWNSHIP OF MEDORA
 TOWNSHIP OF MUSKOKA LAKES
 DISTRICT MUNICIPALITY OF MUSKOKA
 COOTE, HILEY, JEMMETT LIMITED**



- LEGEND**
- MONUMENT PLANTED
 - MONUMENT FOUND
 - SSIB SHORT STANDARD IRON BAR
 - RP ROCK POST
 - C&J COOTE, HILEY, JEMMETT LIMITED
 - CGVD28 CANADIAN GEODETIC VERTICAL DATUM 1928 (PRE-1978 ADJUSTMENT)
 - MTO MINISTRY OF TRANSPORTATION ONTARIO
 - Plan PLAN 35R-12134

BEARINGS ARE UTM GRID, DERIVED FROM OBSERVED REFERENCE POINTS (A) AND (B), BY REAL TIME KINEMATIC (RTK) OBSERVATIONS, UTM ZONE 17, NAD83 (CSRS) (1997.0).

DISTANCES ON THIS PLAN ARE HORIZONTAL GROUND DISTANCES AND CAN BE CONVERTED TO GRID DISTANCES BY MULTIPLYING BY THE AVERAGE COMBINED SCALE FACTOR OF 0.9997268547.

FOR BEARING COMPARISONS, A COUNTERCLOCKWISE ROTATION OF 0°58'40" WAS APPLIED TO PLANS 35R-12134 & 35R-12633 TO CONVERT TO UTM BEARINGS.

SURVEYOR'S CERTIFICATE

I CERTIFY THAT:

- THIS SURVEY AND PLAN ARE CORRECT AND IN ACCORDANCE WITH THE SURVEYS ACT, THE SURVEYORS ACT AND THE LAND TITLES ACT AND THE REGULATIONS MADE UNDER THEM.
- THE SURVEY WAS COMPLETED ON THE 24th. DAY OF MARCH, 2015.

APRIL 24, 2015
 BRACEBRIDGE, ONTARIO

JOHN W. HILEY
 ONTARIO LAND SURVEYOR

COOTE, HILEY, JEMMETT LIMITED
 ONTARIO LAND SURVEYORS

Website: www.muskokasurveyors.com
 E-mail: surveys@muskokasurveyors.com

127 Keith Road Bracebridge, Ontario P1L 0A1	Phone: 705-645-4611 800-494-1443 705-645-1845
Drawn by: M.G.	File: 23672

Archived Survey Plans: www.landsurveyrecords.com

LAKE MUSKOKA AND INDIAN RIVER ARE ARTIFICIALLY REGULATED TO AN ELEVATION OF 225.34 CGVD28.

THE LIMIT OF LAKE MUSKOKA AND INDIAN RIVER AS SHOWN ON THIS PLAN HAS BEEN RE-ESTABLISHED BY SURVEY AND BY IDENTIFYING THE CONTOUR OF ELEVATION 224.26 CGVD28 AS THE BEST AVAILABLE EVIDENCE OF THE WATER'S EDGE EXISTING IMMEDIATELY PRIOR TO THE CONTROLLING OF THE WATER LEVEL BY THE DAM IN BALA.

ELEVATIONS SHOWN HEREON ARE REFERRED TO MTO REGISTRE BENCH MARK No. 435-71 HAVING AN ELEVATION OF 226.97 CGVD28.