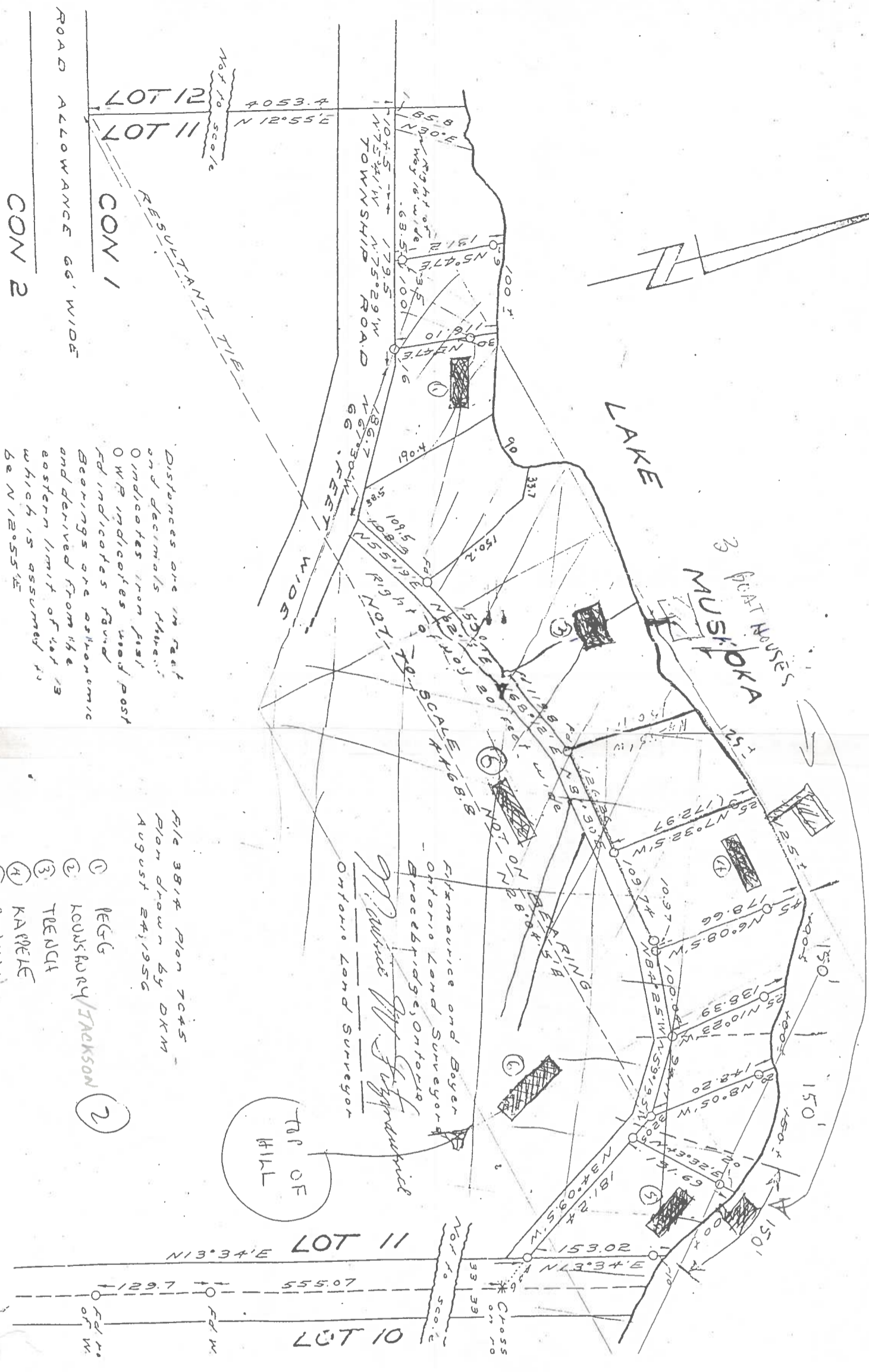


$15 \text{ mm} = 150'$
 $1 \text{ cm} = 4.3'$
 $1 \times 1 = 133 \text{ cm}^2$
 $15 \times 110 = 14850$
 $\frac{10450}{25300} = 41\%$
 $41\% \times 14850 = 6110$
 $14850 - 6110 = 8740$

$464,508 \text{ ft}^2 = 10.6 \text{ acres}$
 $17,560$

PLAN OF SURVEY
PART OF LOT 11 CON 1
TOWNSHIP OF WOODA
DISTRICT OF MUSKOKA

SCALE 100' = 1" ON CH



Distances are in feet
 and decimals thereon.
 O indicates iron post
 O W indicates wood post
 Ed indicates found
 Bearings are astronomic
 and derived from the
 eastern limit of lot 13
 which is assumed to
 be N 12° 55' E

File 3814 Plan 7045 -
 Plan drawn by DKM
 August 24, 1956

1 REGG
 2 KOUSSHORY/JACKSON
 3 TRENDI
 4 KARELE
 5 BOWMAN
 6 MENSANDE

Fitzmaurice and Boyer
 Ontario Land Surveyors
 Accredited by Ontario
M. Wallace City Surveyor
 Ontario Land Surveyor