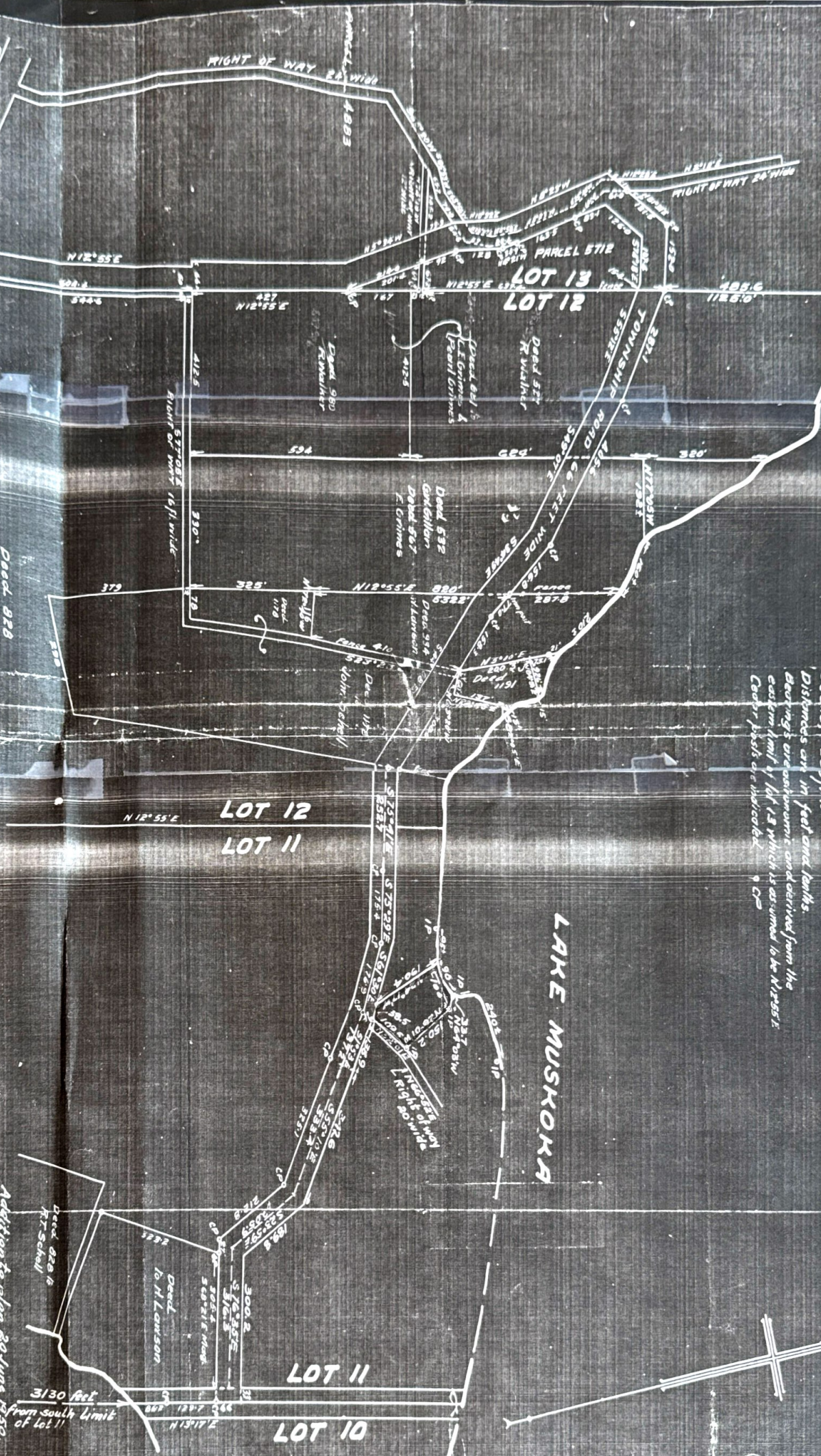


PLAN OF SURVEY OF PUBLIC ROAD
IN LOTS 11, 12, 13 CON. 1 TOWNSHIP OF WOOD
DISTRICT OF MUSKOKA

Scale: 1" = 200 feet
Distances are in feet and tenths.
Bearings are astronomical and derived from the
eastern limit of lot 12 which is assumed to be N 12° 55' E.
Corners posts are indicated by CP.

LAKE MUSKOKA



Deed 526 to
K. R. Schell
Addition to plan 20 June 1950
Bracebridges, Ont 31 Dec 1940
S. H. Burgess
ONTARIO LAND SURVEYOR