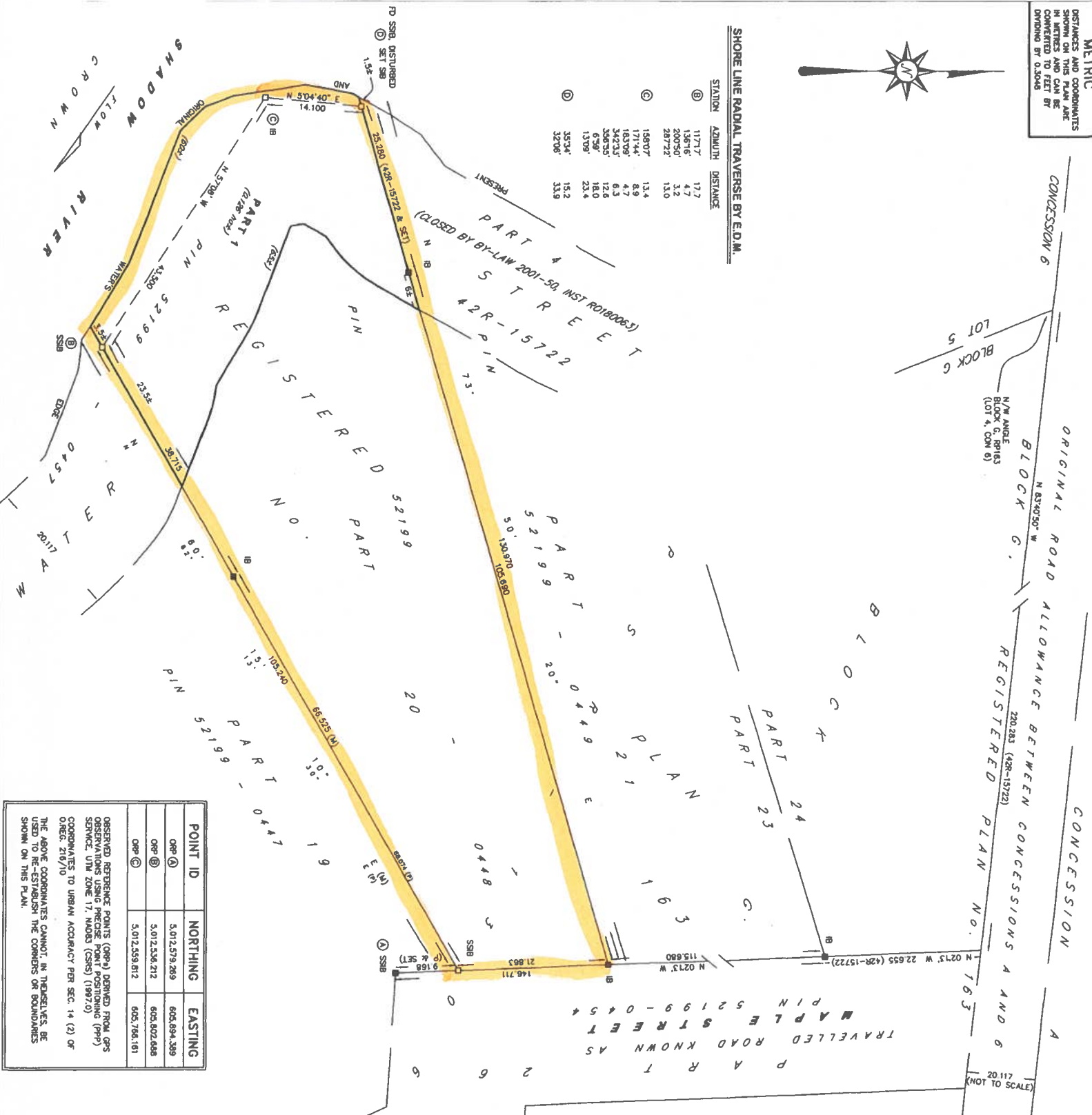


METRIC
 DISTANCES AND COORDINATES SHOWN ON THIS PLAN ARE IN METRES AND CAN BE CONVERTED TO FEET BY DIVIDING BY 0.3048



SHORE LINE RADIAL TRAVERSE BY E.D.M.

STATION	AZIMUTH	DISTANCE
ⓑ	117°17'	17.7
ⓑ	136°16'	4.7
ⓑ	200°50'	3.2
ⓑ	287°22'	13.0
ⓐ	188°07'	13.4
ⓐ	171°44'	8.9
ⓐ	163°09'	4.7
ⓐ	342°33'	6.3
ⓐ	336°53'	12.6
ⓐ	6°39'	18.0
ⓐ	137°09'	23.4
ⓐ	353°34'	15.2
ⓐ	327°08'	33.8



POINT ID	NORTHING	EASTING
OPR ①	5,012,579.269	605,694.389
OPR ②	5,012,536.212	605,602.666
OPR ③	5,012,559.812	605,766.161

OBSERVED REFERENCE POINTS (OPR) DERIVED FROM GPS OBSERVATIONS USING PRECISE POINT POSITIONING (PPP) SERVICE, UTM ZONE 17, NAD83 (CSRS) (1997.0)
 COORDINATES TO URBAN ACCURACY PER SEC. 14 (2) OF OREG. 216/10
 THE ABOVE COORDINATES CANNOT, IN THEMSELVES, BE USED TO RE-ESTABLISH THE CORNERS OR BOUNDARIES SHOWN ON THIS PLAN.

PLAN 42R - 20976

RECEIVED AND DEPOSITED
 FEB 09 2018
 REPRESENTATIVE FOR THE LAND REGISTRAR FOR THE LAND TITLES DIVISION OF PARRY SOUND
 R.C. HAWKINS O.L.S.
 DECEMBER 18, 2017
 I REQUIRE THIS PLAN TO BE DEPOSITED UNDER THE LAND TITLES ACT.
 R.C. HAWKINS O.L.S.

PART(S)	LOT	PLAN	PIN
1	PT OF WATER STREET BETWEEN PART 4, 42R-15722 AND PART 5, 42R-15722	RPI63	PT 52199-0457

NOTE:

BEARINGS ARE UTM GRID DERIVED FROM SIMULTANEOUS GPS OBSERVATIONS (PPP) - (DATAUM ADJUSTMENT EPOCH - 1997.0) ON MONUMENTS ① AND ② NAD83 (CSRS) AND ARE REFERRED TO THE CENTRAL MERIDIAN OF ZONE 17 (81° W LONGITUDE)
 FOR BEARING COMPARISONS, A ROTATION OF 0.98197° (COUNTER CLOCKWISE) WAS APPLIED TO PLAN 42R-15722 AND P2R-1346 TO CONVERT TO UTM BEARINGS.

DISTANCES ON THIS PLAN ARE HORIZONTAL GROUND DISTANCES AND CAN BE CONVERTED TO GRID DISTANCES BY MULTIPLYING BY THE AVERAGE COMBINED SCALE FACTOR OF 0.999706.

THE LIMIT OF SHADOW RIVER AS SHOWN HEREON IS THE BEST AVAILABLE EVIDENCE OF THE ORIGINAL WATER MARK OR WATER'S EDGE EXISTING AT THE TIME OF THE ORIGINAL SURVEY OF THE TOWNSHIP OF HURDRENE.

LEGEND

- DENOTES SURVEY MONUMENT FOUND BEARING IDENTIFICATION UTM
- DENOTES SURVEY MONUMENT SET
- SSB DENOTES SHORT STANDARD IRON BAR
- IB DENOTES IRON BAR
- (M) DENOTES MEASURED
- (P) DENOTES PLAN PSR - 1306
- U/M DENOTES L.U. MAUGHAN COMPANY LIMITED O.L.S.

SURVEYOR'S CERTIFICATE

I CERTIFY THAT:
 1. THIS SURVEY AND PLAN ARE CORRECT AND IN ACCORDANCE WITH THE SURVEY ACT, THE SURVEYORS ACT AND THE LAND TITLES ACT AND THE REGULATIONS MADE UNDER THEM.
 2. THE SURVEY WAS COMPLETED ON THE 24TH DAY OF NOVEMBER, 2017.
 R.C. HAWKINS
 ONTARIO LAND SURVEYOR

PLAN OF SURVEY OF PART OF WATER STREET REGISTERED PLAN NO. 163 BETWEEN PART 4, 42R-15722 AND PART 5, 42R-15722 VILLAGE OF ROSSEAU
 NOW IN THE TOWNSHIP OF SEGUIN DISTRICT OF PARRY SOUND
 SCALE 1:400
 L.U. MAUGHAN COMPANY LIMITED
 ONTARIO LAND SURVEYORS
 5 MCARDURAY STREET, PARRY SOUND ONTARIO
 P2A 1E6 (705)-746-5805 FAX 746-7276