

GENERAL NOTES

- 1) All standards in accordance with current Ontario Provincial Standard Drawings (OPSD) and Ontario Provincial Standard Specifications (OPSS) unless otherwise noted.
- 2) All dimensions are in metres. Pipe sizes in millimetres unless otherwise noted.
- 3) Notify Bell Canada, ICG, Water and Sewer, Hydro and Cable Departments (where applicable) 72 hours prior to commencement for locates.
- 4) The Contractor shall coordinate the works with the Engineer who shall oversee the project on behalf of the owner.
- 5) All construction to be completed to the satisfaction of the Engineer.
- 6) All services and utilities to be supported as per OPSD-1007.01.
- 7) All trenching to be in accordance with the Occupational Health and Safety Act.
- 8) All traffic control and signage to be in accordance with M.T.O. requirements.
- 9) District of Muskoka, Township of Muskoka Lakes and Engineer to be notified at least 72 hours prior to construction.
- 10) Wherever pipes are passing through uncompacted fill areas, the bedding trench shall be excavated to the undisturbed ground level and backfilled with Granular 'A' compacted to 95% standard proctor density or as otherwise shown on the drawings.
- 11) Maintain a minimum cover of 1.8m for water mains or as otherwise shown on the drawings.
- 12) Perform all blasting in accordance with the specification. Undertake pre-blast survey and provide copy to Engineer prior to commencement of blasting operations.
- 13) The location of underground and above ground utilities and structures shown on drawings is approximate only and may not be complete. The exact location of all utilities and structures shall be determined by consulting the Municipal authorities and Utilities companies concerned. The contractor shall prove the exact location of all utilities and structures before construction and shall be responsible for adequately protecting them against damage, assuming all liabilities for damage of such.
- 14) The Contractor must check and verify dimensions, obtain all utility locates, and obtain all required permits and licenses and verify existing service elevations before proceeding with any work.
- 15) Latest approved drawings to be used for construction and all discrepancies reported to the engineer.
- 16) Drawings are not to be scaled.
- 17) All materials to be used on this project shall be lead free.
- 18) Pipe length as labeled is measured horizontally along pipe centre line and may differ from baseline chainage where baseline is not parallel to pipe.
- 19) Utilize erosion and siltation controls as necessary during construction.
- 20) Ensure accessibility to existing residential driveways at all times.
- 21) Ensure adequate protection to all culverts.

RESTORATION NOTES

- 1) Reinststate roads to previous condition or better.
- 2) Contractor to restore Bruce Wilson Drive and ditch work in areas disturbed by construction to equal or better conditions.
- 3) Minimum gravel driveway restoration to be 150mm, Granular 'A'. Asphalt Driveway restoration to be 50mm of HL3.
- 4) All grassed areas disturbed during construction shall be restored with 50mm topsoil and sodded or hydro mulched as per OPSS 507. Maintain until established.
- 5) All restoration work to be completed to the satisfaction of the Engineer.

APPLICABLE ONTARIO PROVINCIAL STANDARDS

- 102 Weighing of materials
- 120 General Specifications for the use of Explosives
- 127 Schedule of rental rates
- 201 Clearing and grubbing
- 206 Stripping of organic material, rough & fine grading
- 310 Asphaltic concrete hot mixed, hot laid and hot mix patching
- 314 Untreated granular subbase, base, surface, shoulder and stockpiling
- 351 1.5M wide concrete sidewalk
- 353 Concrete curb and gutter systems
- 407 The construction of manholes, catchbasins, ditch inlets and valve chambers
- 408 Adjusting or rebuilding manholes, catchbasins, ditch inlets and valve chambers
- 410 Pipe sewer construction by open cut method
- 412 Sewage forcemain construction by open cut method
- 421 Pipe culverts
- 501 Compacting
- 502 Weighing of materials
- 503 Site preparation
- 504 Preservation, protection and reconstruction of existing facilities
- 506 Dust suppressants
- 507 Restoration
- 510 The demolition and removal of structures
- 511 Rip rap, rock protection and gravel sheeting
- 514 Trenching, backfilling and compacting
- 515 Rock excavation for pipelines and structures in open cut
- 516 Excavating, backfilling and compacting for manholes, catchbasins, ditch inlets and valve chambers
- 517 Dewatering
- 518 Control of water
- 538 Shoring and bracing
- 539 Protection schemes
- 543 Traffic control signing
- 565 Protection of trees
- 570 Topsoil
- 571 Construction specifications for sodding
- 572 Construction specifications for seeding and mulching

WATER SERVICE

- 1) Water service to be installed in accordance to OPSD.1104.02
- 2) Service to be CSA. Series 160 P.E. unless otherwise specified.
- 3) Water service bedding shall be granular 'A' compacted to 95% SPD. Maximum 0.30m sand cover to be placed over pipe.
- 4) Water services to be buried to minimum 1.8m depth.

SANITARY SEWERS

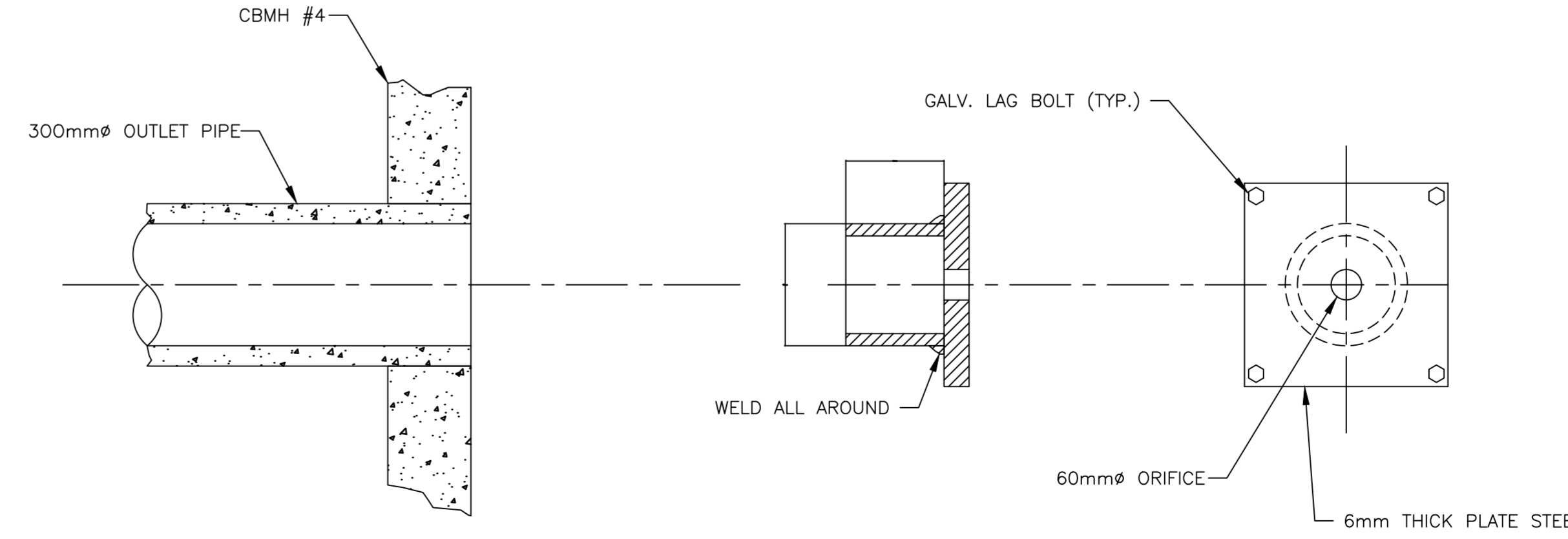
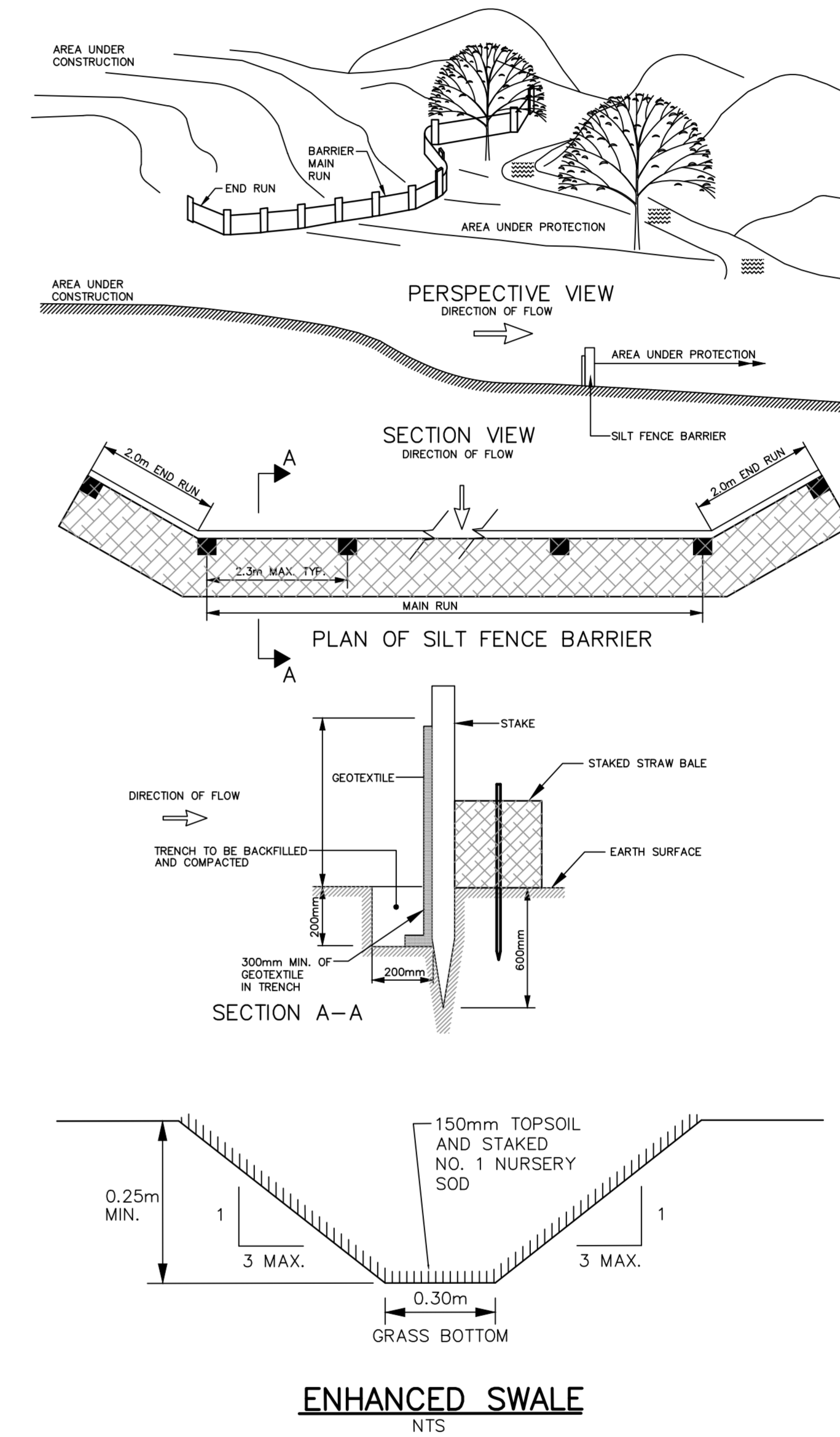
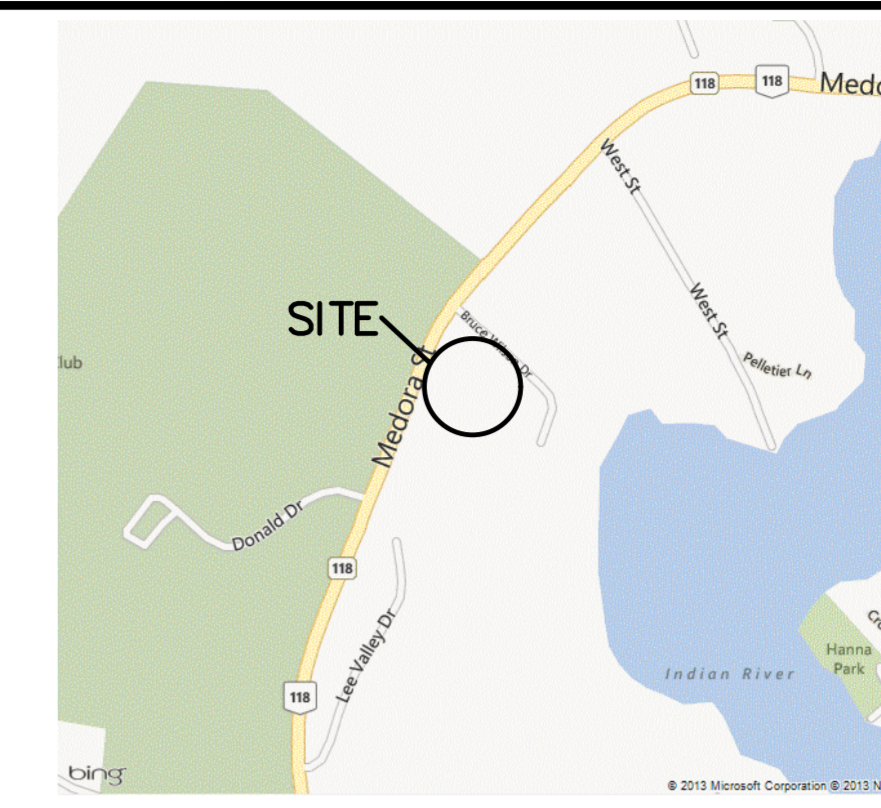
- 1) Work shall conform to ops 410. Pipe embedment and backfill shall conform to OPSD 802.010 and 802.013. Pipe embedment material to springline shall consist of Granular "A" or 19mm diameter clear stone. Embedment from springline to 300mm above pipe shall consist of sand. Trench backfill to road subgrade elevation shall consist of approved native material compacted to 95% SPD.
- 2) Sanitary sewer to be PVC DR35.
- 3) All manholes to be minimum 1200mm dia. precast with aluminum rungs at 300mm centers per OPSD.701.010 Frames and Grates to be per OPSD 401.01 type 'A'.
- 4) All frames/grates for catchbasins; frames/lids for manholes shall be 3 piece adjustable units such as Laperle Foundry "Autostable" C-50M-ONT, Meuller "Adjustable" or approved equivalent.
- 5) Sanitary services to be 150mm dia. PVC DR28 to OPSD 1006.02, marked with a 2x4 stake painted green extending from invert to 600mm above ground.
- 6) Provide frost straps on manholes per DMM 3415.
- 7) Provide water tight pipe-to-manholes connectors in sanitary manholes.
- 8) All manholes to be benched per OPSD 701.021
- 9) Sanitary sewers to be tested in accordance with OPSS 409 & 410. Pipes to be cleaned and flushed prior to the video inspection.

STORM SEWERS, SUBDRAINS & CULVERTS

- 1) Storm sewers shall be smooth wall 320KPa HDPE per BOSS 2000 with bell & spigot joint or PVC Ultra Rib. Pipe embedment and backfill shall conform to OPSD 802.010 and 802.013. Pipe embedment material to springline shall consist of Granular "A" or 19mm diameter clear stone. Embedment from springline to 300mm above pipe shall consist of sand. Trench backfill to road subgrade elevation shall consist of approved native material compacted to 95% SPD.
- 2) Culverts shall be 320KPa. HDPE pipe. Bedding shall be granular 'A' to OPSD 802.010 compacted to 95% SPD. Unless otherwise specified
- 3) Place 150mm dia. rip rap at all culvert inlets and outlets per OPSD 810.01.
- 4) Frost tapers at culverts to be per OPSD.803.030
- 5) Pipe subdrain shall be 150mmØ corrugated HDPE pipe, 210Kpa pipe stiffness, c/w filter sock.
- 6) All storm manholes to be minimum 1200mm dia. precast with aluminum rungs at 300mm centers per OPSD.701.010 Frames and Grates to be per OPSD 401.01 type 'A'.
- 7) Catchbasins to be 600mmx600mm per OPSD.705.010 and OPSD.400.010.

EROSION CONTROL NOTES:

- 1) All silt fencing to be installed prior to any grading or excavation.
- 2) Erosion control fencing to be installed around the base of all stockpiles.
- 3) Additional erosion control measures may be required as site development progresses. contractor to provide all additional erosion control structures.
- 4) Pinestone Engineering Ltd. to monitor erosion control structures to ensure fencing is installed and maintenance is performed to town requirements.
- 5) Erosion control structures to be monitored regularly and any damage repaired immediately. sediments to be removed when accumulations reach a maximum of 1/2 the height of the fence.
- 6) All erosion control structures to remain in place until all disturbed ground have been restablized either by paving or restoration of vegetative ground cover.
- 7) No alternate methods of erosion protection shall be permitted unless approved Pinestone Engineering Ltd. and the Township of Muskoka Lakes department of public works.
- 8) Contractor is responsible for municipal roadway and sidewalk to be cleared of all sediments from vehicular tracking etc. at the end of each day.



The position of existing above ground and underground utilities and facilities are not necessarily shown on the drawings, and where shown, the accuracy of the position of such utilities and facilities is not guaranteed. Before starting work, the contractor shall confirm the exact location of all existing utilities and facilities, and shall assume all liability for damage to them.

Drawings shall not be used for construction unless sealed and signed. All work to be performed in accordance with the Occupational Health & Safety Act 1990.

Any errors and/or omissions shall be reported to Pinestone Engineering Ltd. without delay.

LEGEND

NO.	YY:MM:DD	REVISION	BY
3	15.04.07	SITE PLAN REVISION	J.L.
2	13.09.27	ISSUED FOR TENDER	J.V.
1	13.09.08	REVISED FOR DISTRICT COMMENTS	J.L.

SEAL: PROFESSIONAL ENGINEER, T.N. HARVEY, PROVINCE OF ONTARIO

NORTH ARROW

DESIGN BY:	J.V.
DRAWN BY:	J.L.
CHECKED:	J.V.
DATE:	APRIL 2015
SCALE:	1:250

CLIENT/PROJECT		
TIM HORTON'S PORT CARLING		
DRAWING TITLE		
NOTES AND DETAILS		
PROJECT NO.	DRAWING NO.	REVISION
12-11032	DET-1	3

The position of existing above ground and underground utilities and facilities are not necessarily shown on the drawings, and where shown, the accuracy of the position of such utilities and facilities is not guaranteed. Before starting work, the contractor shall confirm the exact location of all existing utilities and facilities, and shall assume all liability for damage to them.

Drawings shall not be used for construction unless sealed and signed. All work to be performed in accordance with the Occupational Health & Safety Act 1990.

Any errors and/or omissions shall be reported to Pinestone Engineering Ltd. without delay.

NOTES

1. TOPOGRAPHIC INFORMATION BY PINESTONE ENGINEERING LTD. MAY 2013.
2. LEGAL INFORMATION BY J.K. DEVELOPMENT GP³ LIMITED REAL ESTATE CONSULTING AND DEVELOPMENT.


LEGEND

- SITE BOUNDARY
- EXISTING SPOT ELEVATIONS/CONTOURS
- EXISTING SANITARY SEWER
- EXISTING STORM SEWER
- EXISTING WATERMAIN
- TREE LINE
- EX. CATCHBASIN
- EX. MANHOLE
- ⊕ EX. FIRE HYDRANT

SITE BENCHMARK

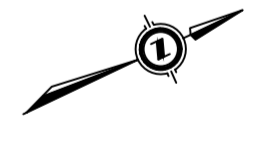
BM#1 NAIL IN HYDRO POLE ELEVATION 232.460m

NO.	YY:MM:DD	REVISION	BY
3	15.04.07	SITE PLAN REVISION	J.L.
2	13.09.27	ISSUED FOR TENDER	J.V.
1	13.09.08	REVISED FOR DISTRICT COMMENTS	J.L.



PROFESSIONAL ENGINEER
T.N. HARVEY
PROVINCE OF ONTARIO

NORTH ARROW



DESIGN BY:	J.V.
DRAWN BY:	J.L.
CHECKED:	J.V.
DATE:	APRIL 2015
SCALE:	1:250

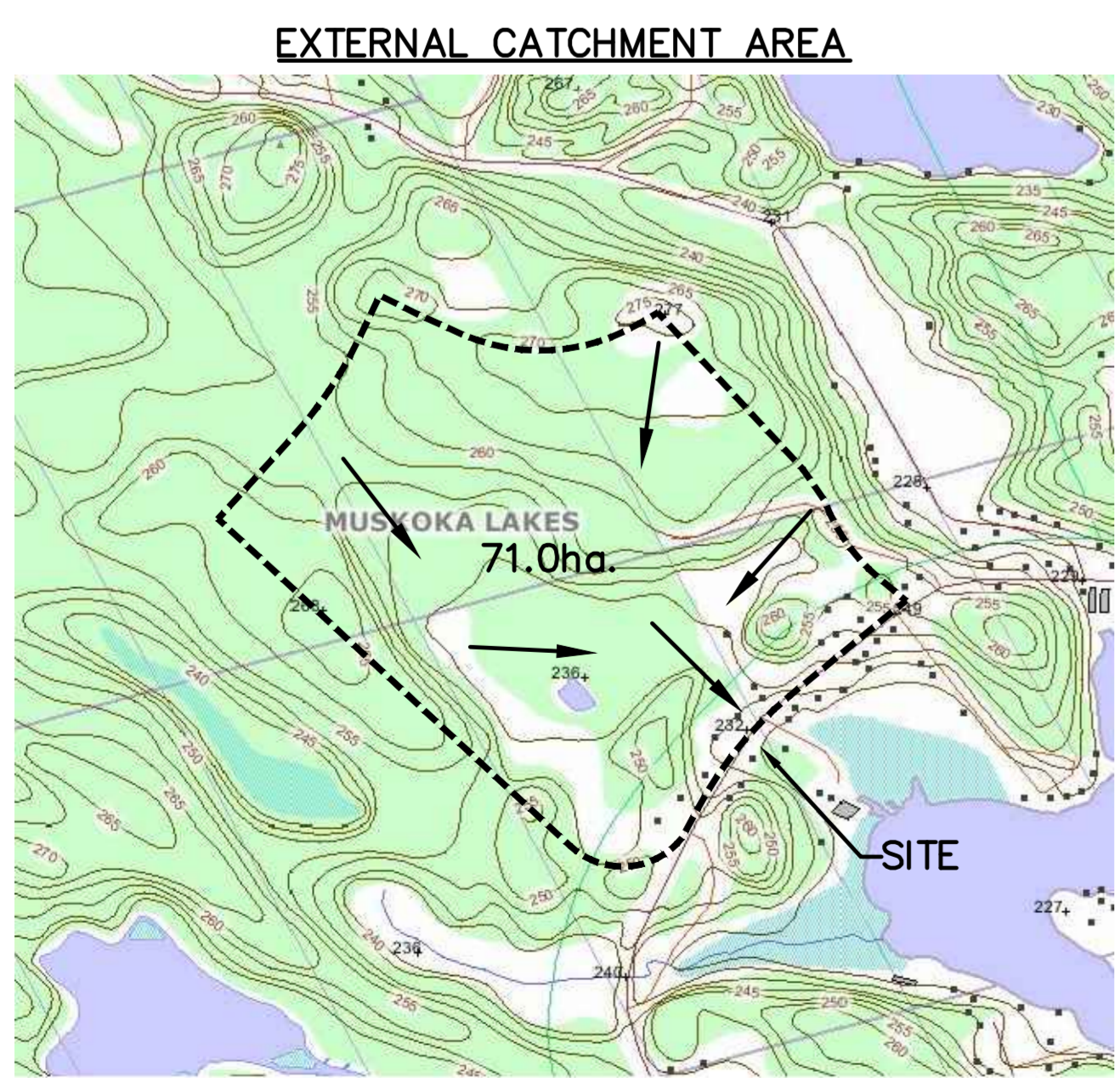
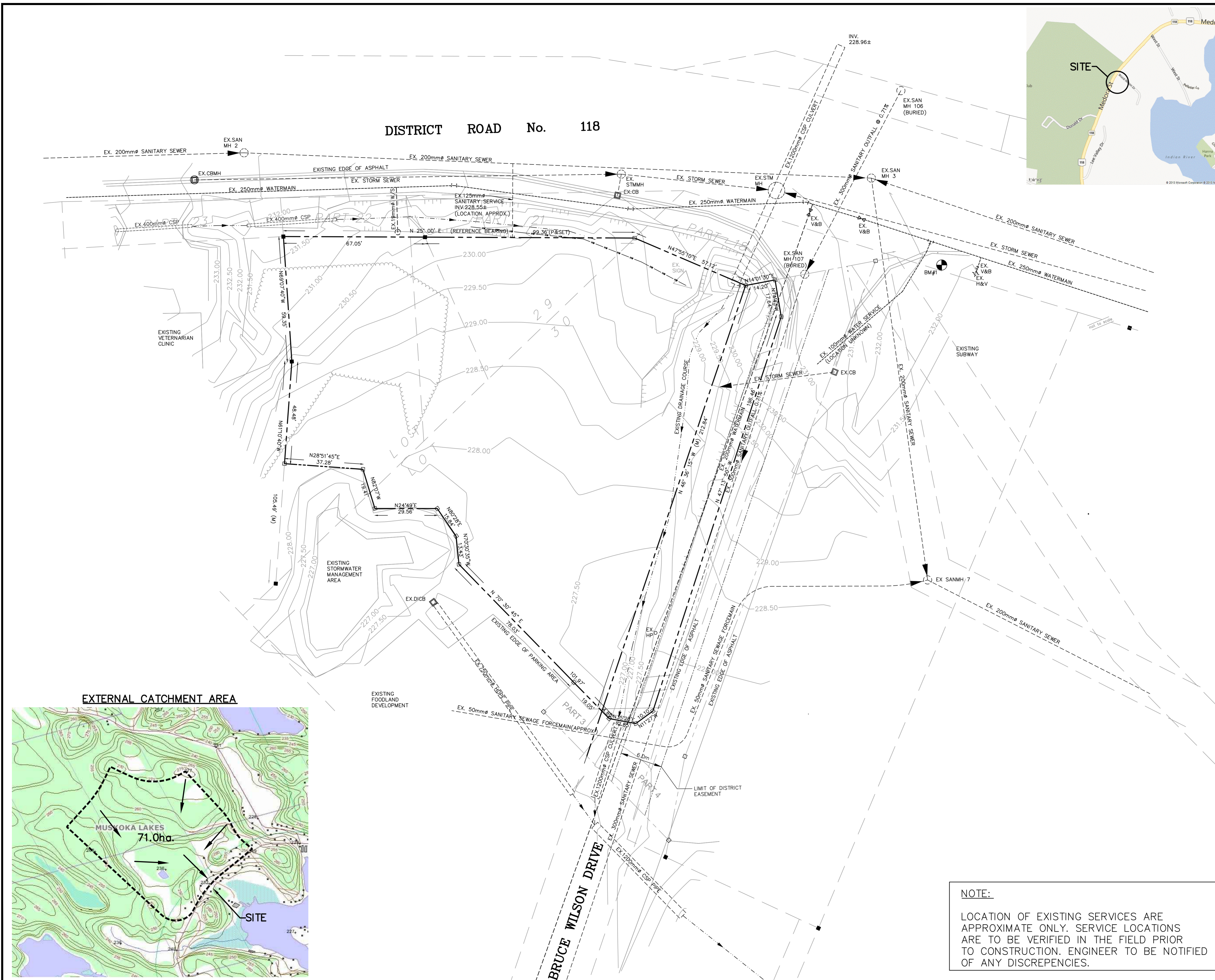
CLIENT/PROJECT

**TIM HORTON'S
PORT CARLING**

DRAWING TITLE

EXISTING CONDITIONS

PROJECT NO.	DRAWING NO.	REVISION
12-11032	EX-1	3



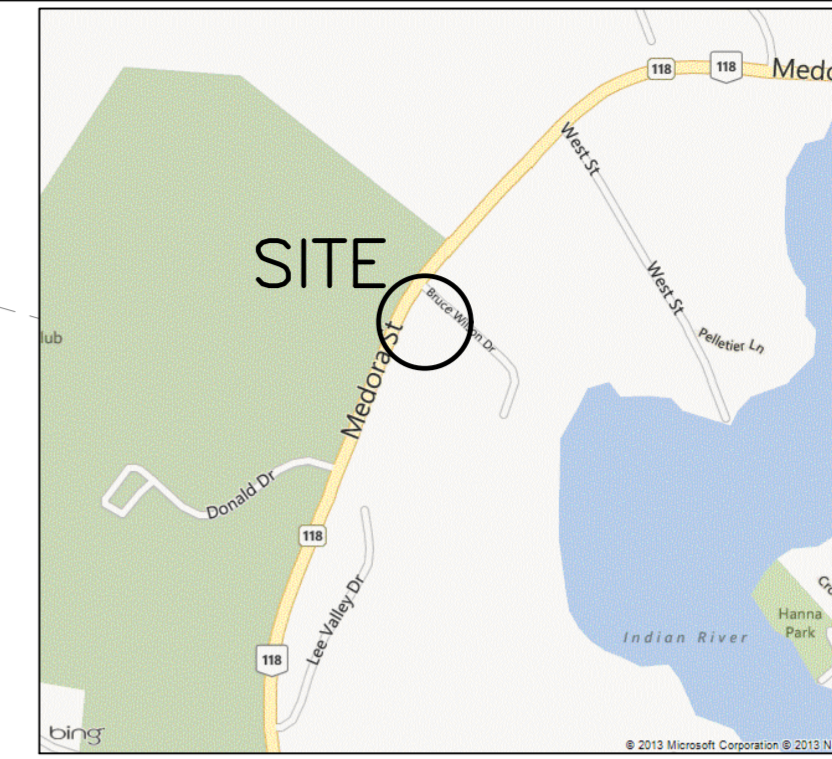
NOTE:

LOCATION OF EXISTING SERVICES ARE APPROXIMATE ONLY. SERVICE LOCATIONS ARE TO BE VERIFIED IN THE FIELD PRIOR TO CONSTRUCTION. ENGINEER TO BE NOTIFIED OF ANY DISCREPANCIES.

MEDORA STREET

DISTRICT ROAD No. 118

(BY BY-LAW No. 98-40, REGISTERED INSTRUMENT No. 310192)



KEY PLAN



The position of existing above ground and underground utilities and facilities are not necessarily shown on the drawings, and where shown, the accuracy of the position of such utilities and facilities is not guaranteed. Before starting work, the contractor shall confirm the exact location of all existing utilities and facilities, and shall assume all liability for damage to them.

Drawings shall not be used for construction unless sealed and signed. All work to be performed in accordance with the Occupational Health & Safety Act 1990.

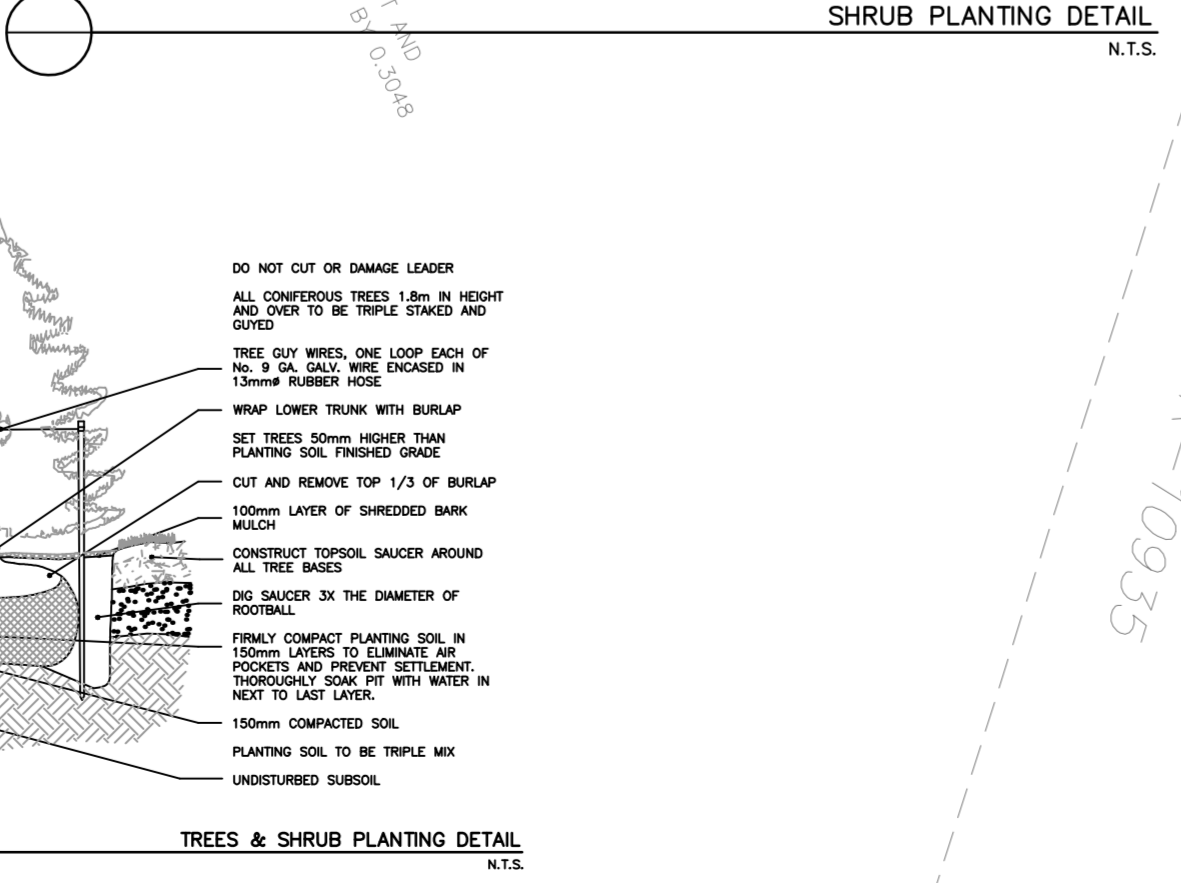
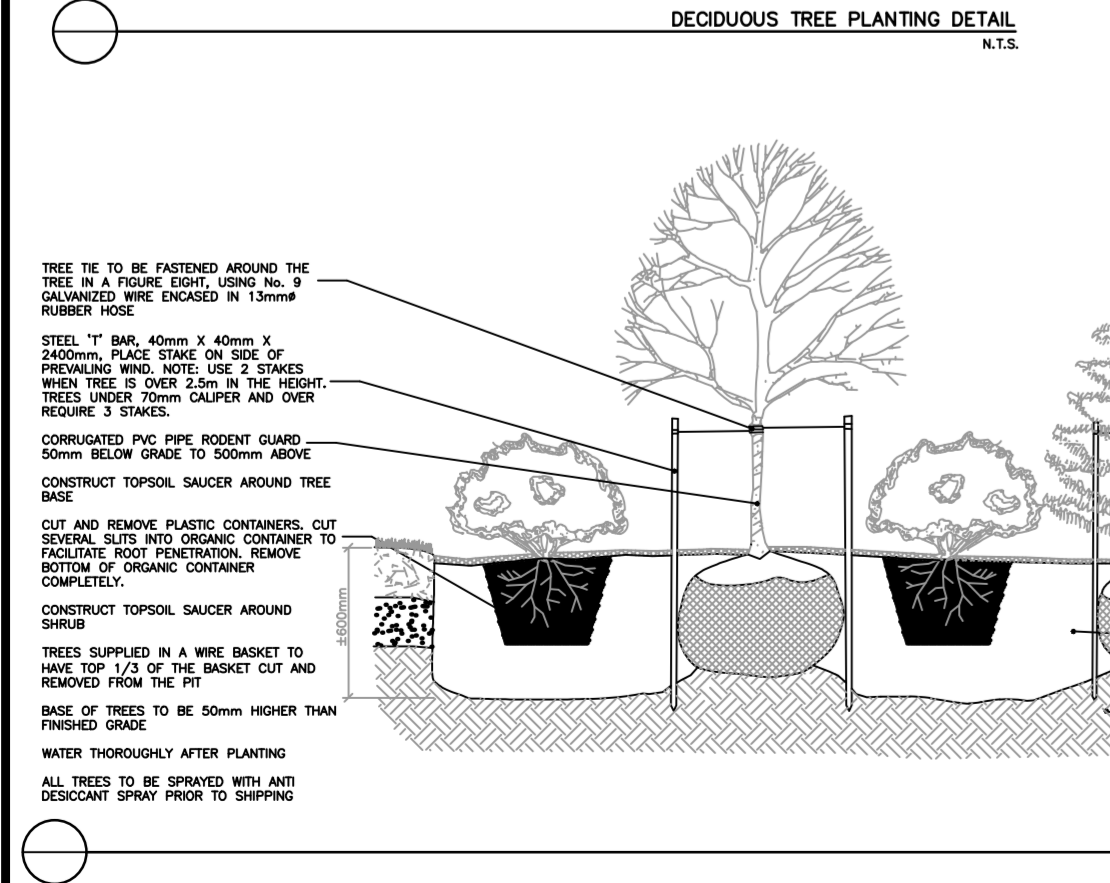
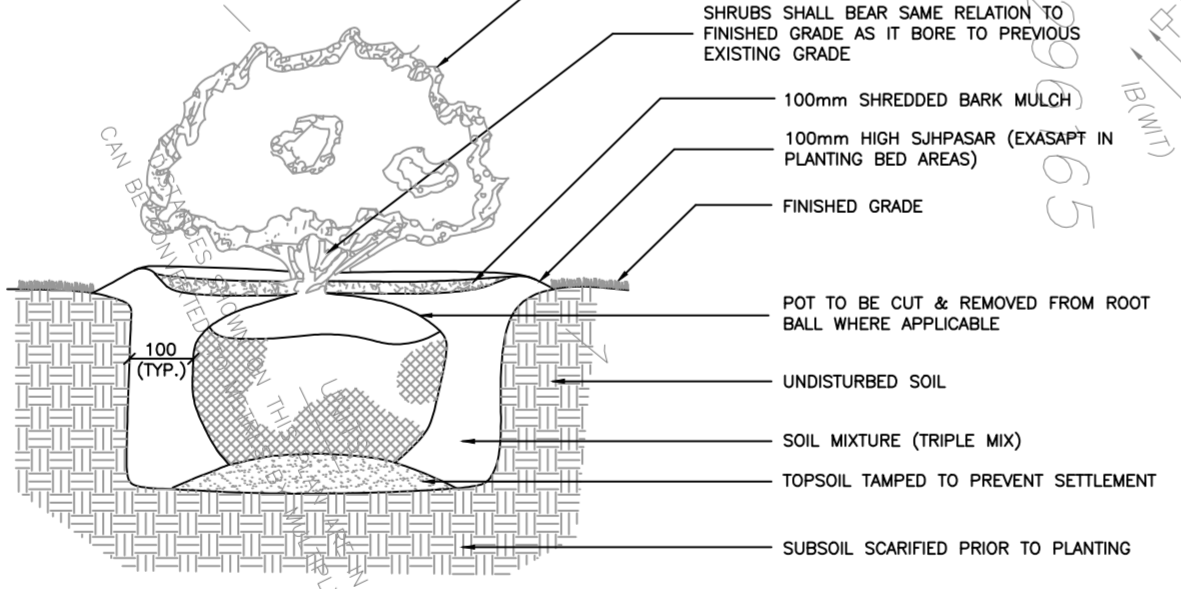
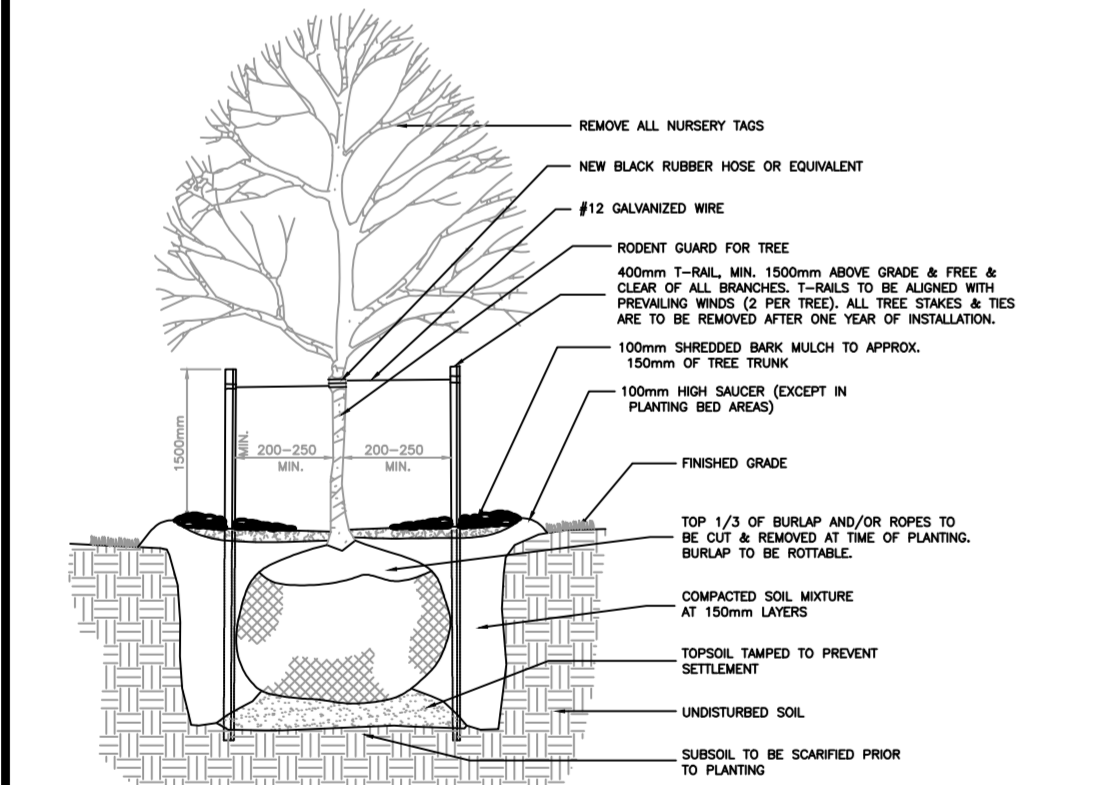
Any errors and/or omissions shall be reported to Pinestone Engineering Ltd. without delay.

LANDSCAPE NOTES

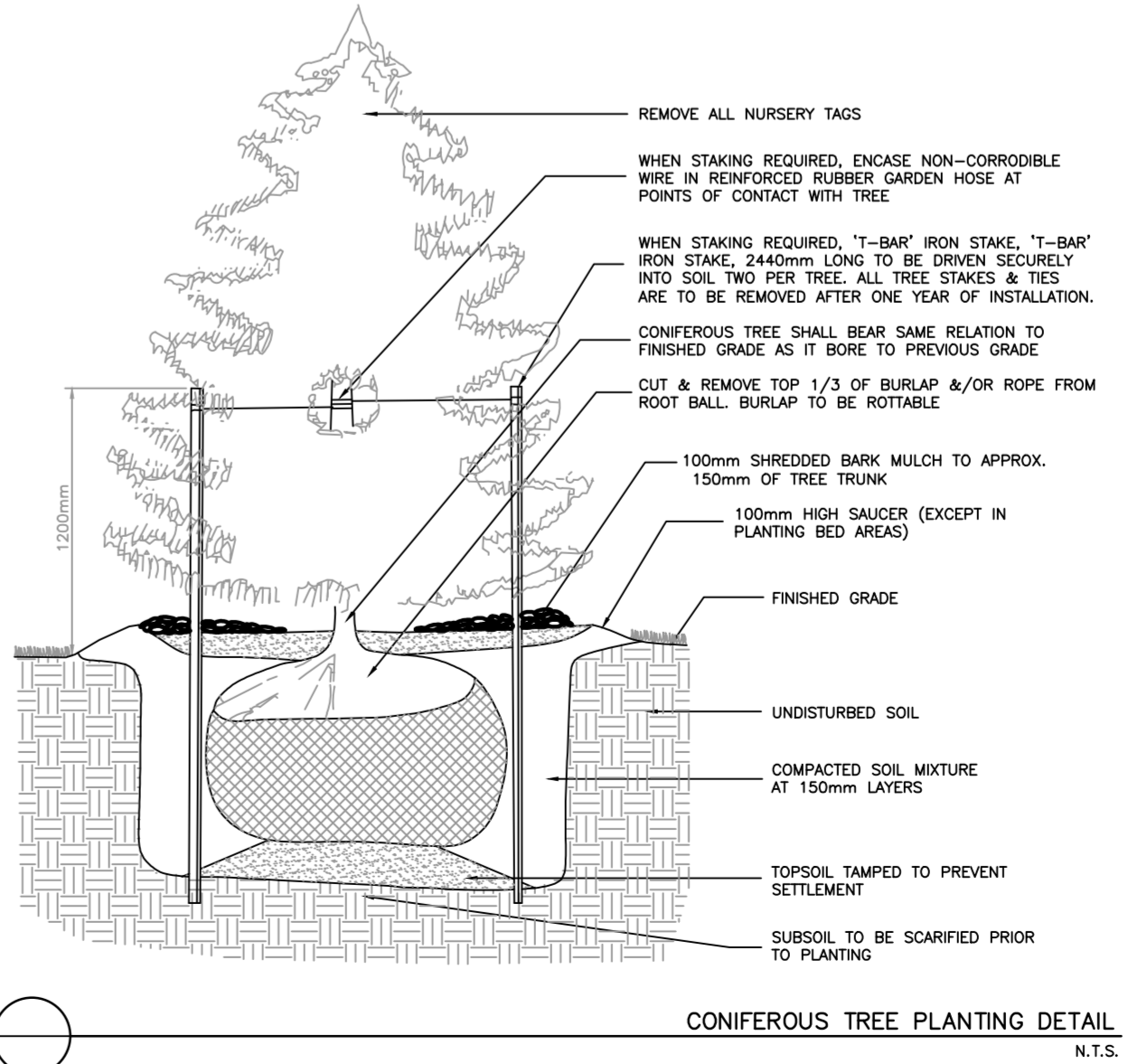
- CONTRACTOR SHALL SUPPLY ALL PLANTS AND MATERIALS IN QUANTITIES SUFFICIENT TO COMPLETE WORK SHOWN ON THIS DRAWING. ANY DISCREPANCIES BETWEEN QUANTITIES SHALL BE REPORTED TO THE LANDSCAPE ARCHITECT FOR DIRECTION.
- PLANT MATERIALS COLLECTED FROM WILD SOURCES WILL NOT BE ACCEPTED. LANDSCAPE ARCHITECT MAY REQUIRE THAT SUPPLIER INVOICES FOR PLANT MATERIAL BE SUBMITTED FOR INSPECTION.
- STAKING (AVOID) OF PLANT MATERIALS TO BE APPROVED BY LANDSCAPE ARCHITECT PRIOR TO INSTALLATION. DRAWING MAY BE SCALED FOR APPROXIMATE LAYOUT OF INDIVIDUAL TREES AND PLANTING BEDS.
- LANDSCAPE ARCHITECT RESERVES THE RIGHT TO REFUSE ACCEPTANCE OF ANY PLANT DISPLAYING GROWTH HABITS, INJURY OR DISEASE. ANY PLANT MATERIAL THAT IS REJECTED BY THE LANDSCAPE ARCHITECT WILL BE PROMPTLY REMOVED FROM THE SITE BY THE CONTRACTOR AND REPLACED WITH MATERIAL OF ACCEPTABLE QUALITY AT NO ADDITIONAL COST TO THE PROJECT.
- ALL PLANT MATERIALS TO CONFORM TO THE CANADIAN NURSERY LANDSCAPE ASSOCIATION (CNLA) FOR VARIETY, SIZE AND CONDITION. ANY PLANTS THAT DO NOT CONFORM TO THESE STANDARDS WILL BE PROMPTLY REMOVED FROM THE SITE BY THE CONTRACTOR AT NO ADDITIONAL COST TO THE PROJECT.
- ANY SUBSTITUTIONS OF PLANT MATERIALS OR QUANTITIES REQUIRES THE WRITTEN APPROVAL OF THE LANDSCAPE ARCHITECT.
- PLANTS ARE NOT TO BE INSTALLED OR TRANSPORTED DURING EXTREME HEAT, DROUGHT OR OTHER UNDESIRABLE CONDITIONS. CONTRACTOR SHALL NOT PROCEED IN UNCERTAINTY. CONTACT LANDSCAPE ARCHITECT FOR DIRECTION.
- THE CONTRACTOR SHALL RELOCATE ANY TREE OR SHRUB ON THE PROPERTY AS DIRECTED BY THE LANDSCAPE ARCHITECT.
- ALL PLANT MATERIALS WILL BE PLANTED IN AN APPROVED TOPSOIL. NO ADDITIONAL SOILS OR ADDITIVES WILL BE PERMITTED UNLESS SPECIFIED BY THE CONTRACTOR AT NO ADDITIONAL COST TO THE PROJECT.
- ALL DECIDUOUS AND CONIFEROUS TREES AND SHRUBS SHALL BE PLANTED AND STAKED IN ACCORDANCE WITH THE PLANTING DETAILS ON THIS DRAWING.
- TOPSOIL TO BE FREE FROM WEEDS, SUBSOIL, ROOTS, STONES, LUMPS OF CLAY AND TOXIC MATERIALS.
- SHREDDED BARK MULCH TO BE UNIFORMLY APPLIED UNDER ALL TREES AND IN PLANTING BEDS 100mm IN THICKNESS. SAMPLE TO BE SUBMITTED TO THE LANDSCAPE ARCHITECT FOR APPROVAL PRIOR TO PLACEMENT.
- INSTALL APPROVED WHORLROUND TYPE TREE GUARDS ON ALL DECIDUOUS TREES OVER 2000mm IN HEIGHT. ENSURE THAT THE BOTTOM 50mm OF THE TREE GUARD EXTENDS BELOW SOIL TO PREVENT ENTRY BY RODENTS.
- ANY DEAD OR DAMAGED BRANCHES OF TREES OR SHRUBS TO BE PRUNED ACCORDING TO STANDARDS AND TIMING APPROPRIATE TO EACH SPECIES.
- CONTRACTOR TO VERIFY ALL DIMENSIONS AND QUANTITIES AND REPORT ANY DISCREPANCIES TO THE LANDSCAPE ARCHITECT.
- CONTRACTOR TO IDENTIFY WITH OWNER AND LANDSCAPE ARCHITECT ANY MAINTENANCE REQUIREMENTS NECESSARY FOR WARRANTY PURPOSES.
- ALL WORKMANSHIP AND MATERIALS TO BE GUARANTEED FOR TWO YEARS FOLLOWING SUBSTANTIAL COMPLETION AS DOCUMENTED BY THE LANDSCAPE ARCHITECT AND/OR MUNICIPALITY.
- LANDSCAPE ARCHITECT RESERVES THE RIGHT TO EXTEND CONTRACTOR'S WARRANTY RESPONSIBILITIES FOR AN ADDITIONAL YEAR, F.T. AT THE END OF INITIAL WARRANTY PERIOD. LEAF DEVELOPMENT AND GROWTH IS NOT SUFFICIENT TO ENSURE FUTURE SURVIVAL AS DETERMINED BY THE LANDSCAPE ARCHITECT.
- PROVIDE UNIT PRICES TO ALLOW FOR ADDITIONS / DELETIONS TO THE CONTACT.
- CONTRACTOR TO VERIFY ON-SITE ALL UNDERGROUND UTILITY LOCATIONS PRIOR TO PLANTING.
- CONTRACTOR IS RESPONSIBLE FOR ANY DAMAGE TO EXISTING LANDSCAPED AREAS AND MUST MAKE ALL NECESSARY RESTORATIONS AND REPAIRS.
- CONTRACTOR SHALL REMOVE ALL TREE STAKES AND ASSOCIATED GUY WIRES AND ATTACHMENT DEVICES AFTER THE SPECIFIED WARRANTY PERIOD.
- ALL TREE LOCATIONS SHALL CONFORM TO THE SETBACK REQUIREMENTS ESTABLISHED BY THE CITY OR MUNICIPALITY.

PART 1 PLAN 35R-13859 INSTRUMENT 308806

BRUCE WILSON DRIVE INSTRUMENT 227165



Symbol	Botanical/Common Name	Root	Size
Proposed Planting List			
Deciduous Trees			
AR	Acer Rubrum/Red Maple	WB	60mm cal.
Evergreen Trees			
PG	Picea glauca/White Pine	WB	2.4m high
Deciduous Shrubs			
CA	Cornus stolonifera/Red Dogwood	Potted	60cm
D	Diervilla lonicera/Bush Honeysuckle	Potted	60cm
SA	Spiraea alba/Meadowsweet	Potted	60cm
Perennials			
MP	Mixed Perennials - location to be determined on Site	Potted	150mm
Native Wildflower			
NW	6810 OSC Ontario Seed Company Native Cottage Country Mix		

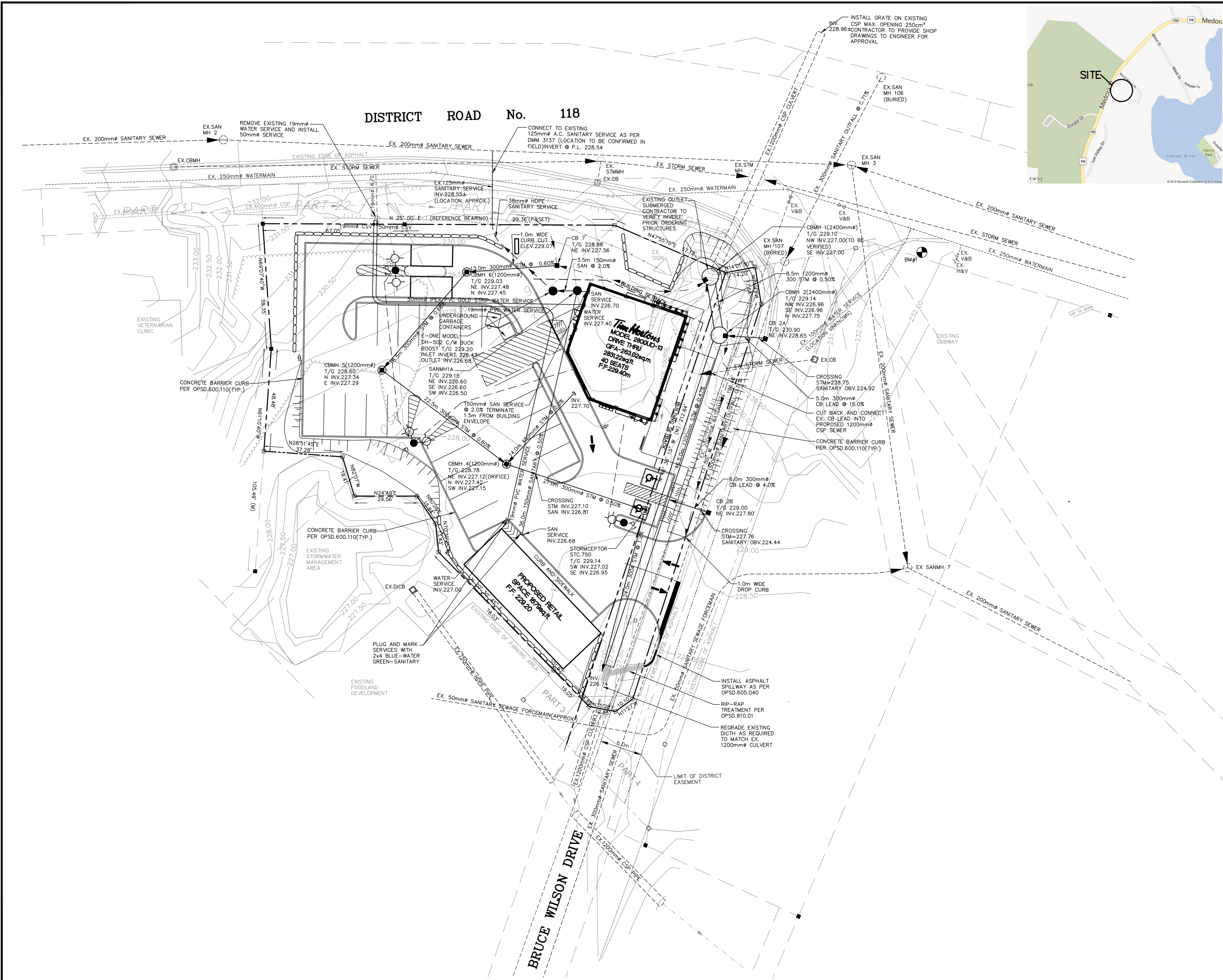


NO.	YY.MM.DD	REVISION	BY
3	15.04.07	SITE PLAN REVISION	J.L.
2	13.09.27	ISSUED FOR TENDER	J.W.
1	13.09.08	REVISED FOR DISTRICT COMMENTS	J.L.

DESIGN BY:	J.V.
DRAWN BY:	J.L.
CHECKED:	J.V.
DATE:	APRIL 2015
SCALE:	1:250

CLIENT/PROJECT	TIM HORTON'S PORT CARLING
DRAWING TITLE	LANDSCAPE PLAN

PROJECT NO.	12-11032	DRAWING NO.	L1	REVISION	3
-------------	----------	-------------	----	----------	---



The position of existing above ground and underground utilities and facilities are not necessarily shown on the drawings, and where shown, the accuracy of the position of such utilities and facilities is not guaranteed. Before starting work, the contractor shall confirm the exact location of all existing utilities and facilities, and shall assume all liability for damage to them.

Drawings shall not be used for construction unless sealed and signed. All work to be performed in accordance with the Occupational Health & Safety Act, 1990.

Any errors and/or omissions shall be reported to Pinestone Engineering Ltd. without delay.

- NOTES**
1. TOPOGRAPHIC INFORMATION BY PINESTONE ENGINEERING LTD., MAY 2013.
 2. LEGAL INFORMATION BY J.K. DEVELOPMENT GP LIMITED REAL ESTATE CONSULTING AND DEVELOPMENT.

- LEGEND**
- SANITARY MANHOLE
 - STORM MANHOLE
 - ⊙ CATCHBASIN MANHOLE
 - CATCHBASIN
 - ⊙ OIL/GRIT TREATMENT UNIT

SITE BENCHMARK

BM#1 NAIL IN HYDRO POLE ELEVATION 232.460m

NO.	YY/MM/DD	REVISION	BY
2	13.09.27	ISSUED FOR TENDER	J.V.
1	13.09.08	REVISED FOR DISTRICT COMMENTS	J.L.

NORTH ARROW

DESIGN BY:	J.V.
DRAWN BY:	J.L.
CHECKED:	J.V.
DATE:	APRIL 2015
SCALE:	1:250

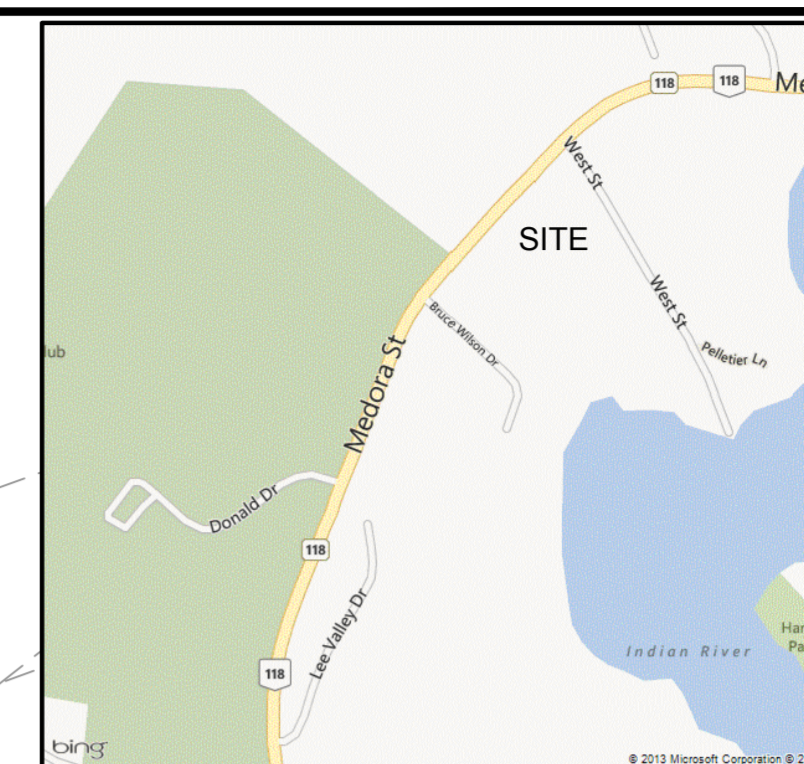
CLIENT/PROJECT

**TIM HORTON'S
PORT CARLING**

DRAWING TITLE

SITE SERVICING PLAN

PROJECT NO.	DRAWING NO.	REVISION
12-11032	SERV-1	3



KEY PLAN

DETAILS OF DEVELOPMENT		
DATA	REQUIRED	PROVIDED
ZONING C4 - Highway Commercial		
SETBACKS		
FY	7.60m	7.60m
RY	7.60m	1.50m
INT.SY	6.10m	7.10m
EXT.SY	7.60m	7.60m
NET LOT AREA (m ² / Ac.)	3257.34sq.m/35,062.33sq.ft./0.80Acres	
MAX. BUILDING COVERAGE	50%	7.9%
BUILDING HEIGHT	9.14m	9.14m
DRIVE THRU STACKING	n/a	24
PARKING:		
Total Spaces	30	26
Handicap Spaces	2	2
Stall Length	6.10m	6.10m
Stall Width	3.00m	3.00m
Aisle Width	6.10m	VARIES



The position of existing above ground and underground utilities and facilities are not necessarily shown on the drawings, and where shown, the accuracy of the position of such utilities and facilities is not guaranteed. Before starting work, the contractor shall confirm the exact location of all existing utilities and facilities, and shall assume all liability for damage to them.

Drawings shall not be used for construction unless sealed and signed. All work to be performed in accordance with the Occupational Health & Safety Act 1990. Any errors and/or omissions shall be reported to Pinestone Engineering Ltd. without delay.

3	15.04.07	SITE PLAN REVISION	J.L.
2	13.09.27	ISSUED FOR TENDER	J.V.
1	13.09.08	REVISED FOR DISTRICT COMMENTS	J.L.

NO.	YY.MM.DD	REVISION	BY
-----	----------	----------	----

SEAL	NORTH ARROW
------	-------------

DESIGN BY:	J.V.
DRAWN BY:	J.L.
CHECKED:	J.V.
DATE:	APRIL 2015
SCALE:	1:250

CLIENT/PROJECT
**TIM HORTON'S
PORT CARLING**

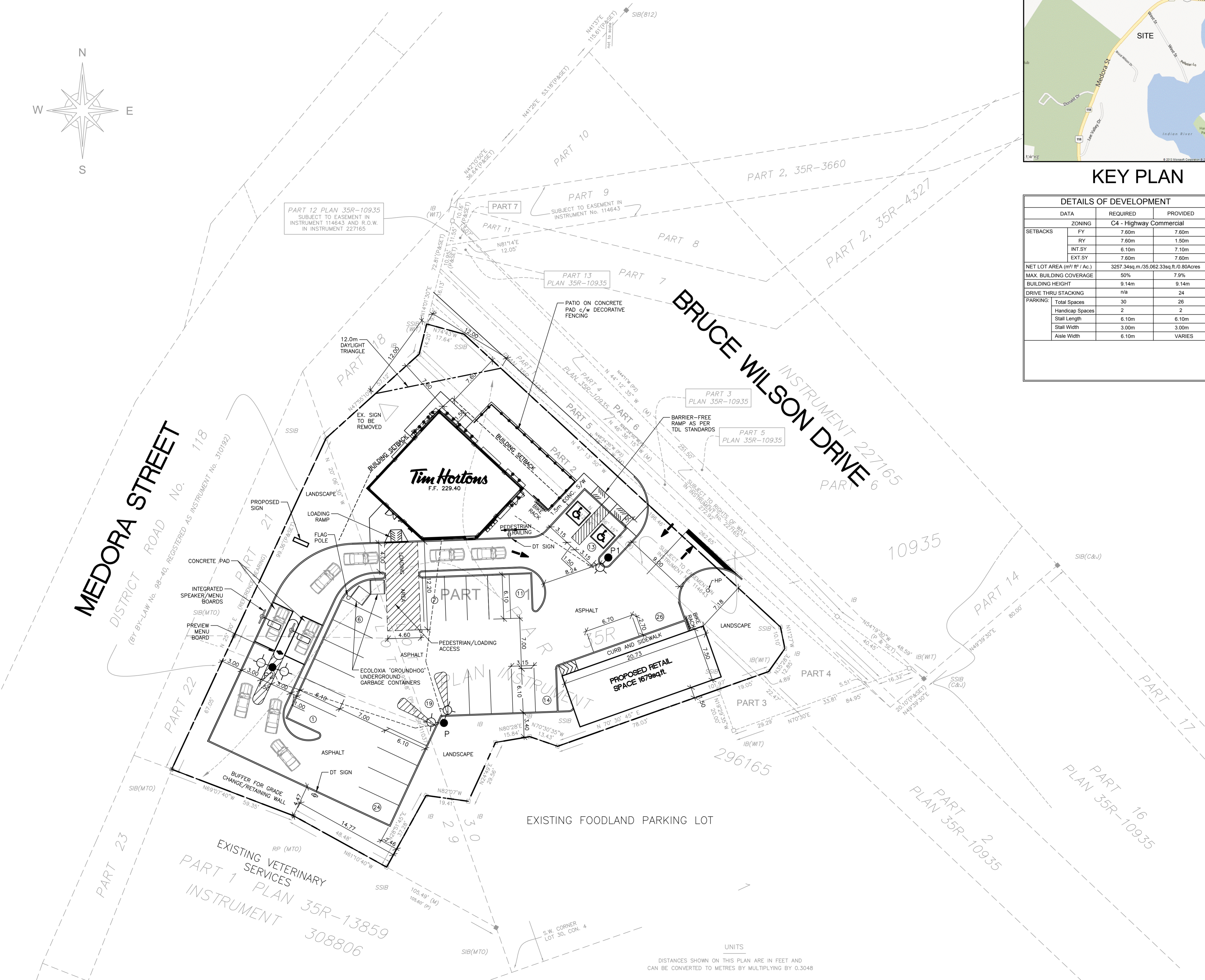
DRAWING TITLE
SITE PLAN

PROJECT NO.	DRAWING NO.	REVISION
12-11032	SP1	3

11032-SP1A

MEDORA STREET
DISTRICT ROAD No. 118
(BY BY-LAW No. 98-40, REGISTERED AS INSTRUMENT No. 310192)

BRUCE WILSON DRIVE
INSTRUMENT 227165

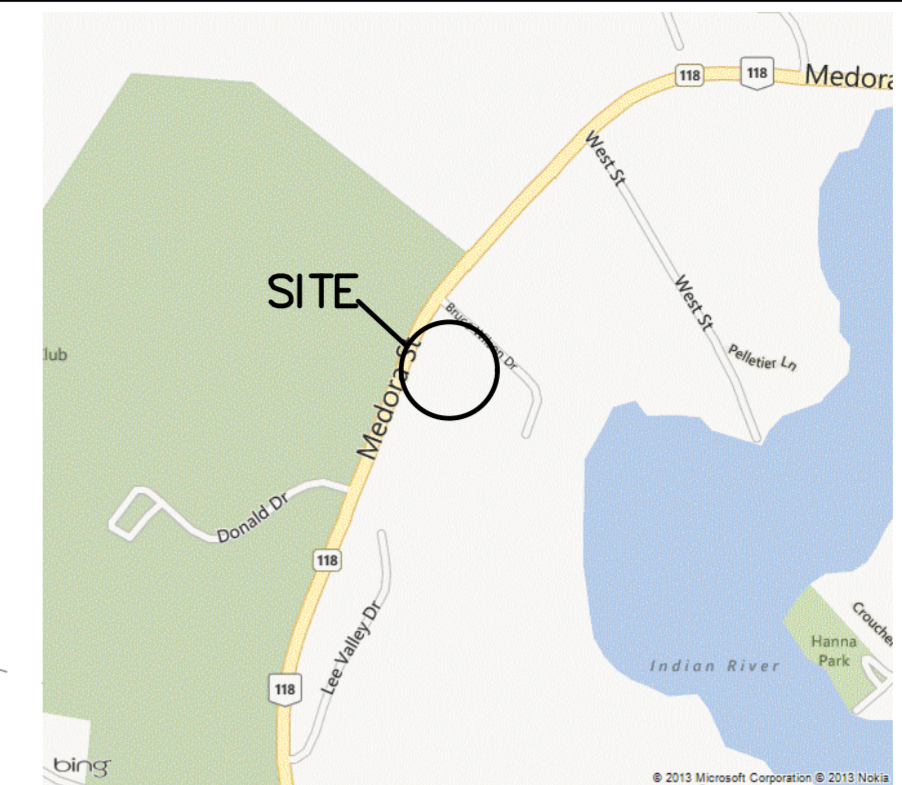


EXISTING FOODLAND PARKING LOT

EXISTING VETERINARY SERVICES
PART 1 PLAN 35R-13859
INSTRUMENT 308806

UNITS
DISTANCES SHOWN ON THIS PLAN ARE IN FEET AND CAN BE CONVERTED TO METRES BY MULTIPLYING BY 0.3048

DISTRICT ROAD No. 118



The position of existing above ground and underground utilities and facilities are not necessarily shown on the drawings, and where shown, the accuracy of the position of such utilities and facilities is not guaranteed. Before starting work, the contractor shall confirm the exact location of all existing utilities and facilities, and shall assume all liability for damage to them.

Drawings shall not be used for construction unless sealed and signed. All work to be performed in accordance with the Occupational Health & Safety Act 1990.

Any errors and/or omissions shall be reported to Pinestone Engineering Ltd. without delay.

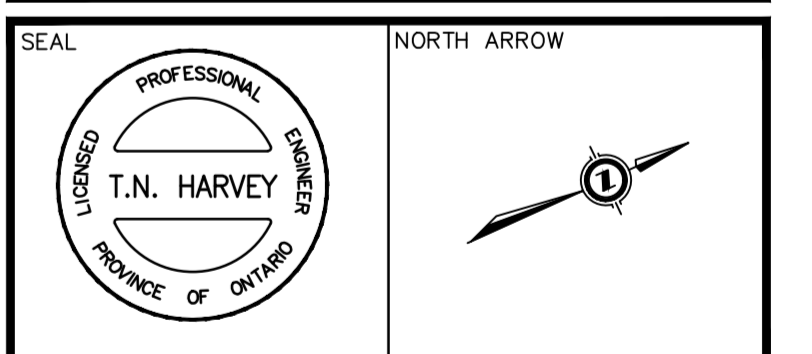
- NOTES**
- TOPOGRAPHIC INFORMATION BY PINESTONE ENGINEERING LTD. MAY 2013.
 - LEGAL INFORMATION BY J.K. DEVELOPMENT GP³ LIMITED REAL ESTATE CONSULTING AND DEVELOPMENT.
 - PAVEMENT STRUCTURE TO BE CONSTRUCTED IN ACCORDANCE WITH GEOTECHNICAL REPORT PREPARED BY SOIL ENGINEERS LTD.

- LEGEND**
- x F.F. 239.80 PROPOSED FIRST FLOOR ELEVATION
 - x 239.32EX. EXISTING ELEVATION
 - x 239.35 PROPOSED ELEVATION
 - x (239.22) PROPOSED SWALE ELEVATION
 - x 239.65T/C PROPOSED TOP OF CURB ELEVATION
 - SILT FENCE
 - EXISTING/PROPOSED DRAINAGE SWALE
 - CATCH BASIN
 - CATCH BASIN MANHOLE
 - OIL/GRIT TREATMENT UNIT
 - DIRECTION OF MAJOR OVERLAND FLOW
 - DROP CURB
 - DOWNSPOUT
 - HYDRANT
 - WATERMAIN VALVE
 - WATER SERVICE VALVE
 - SILT FENCE

SITE BENCHMARK

BM#1 NAIL IN HYDRO POLE ELEVATION 232.460m

NO.	YY.MM.DD	REVISION	BY
3	15.04.07	SITE PLAN REVISION	J.L.
2	13.09.27	ISSUED FOR TENDER	J.V.
1	13.09.08	REVISED FOR DISTRICT COMMENTS	J.L.



DESIGN BY:	J.V.
DRAWN BY:	J.L.
CHECKED:	J.V.
DATE:	APRIL 2015
SCALE:	1:250

CLIENT/PROJECT

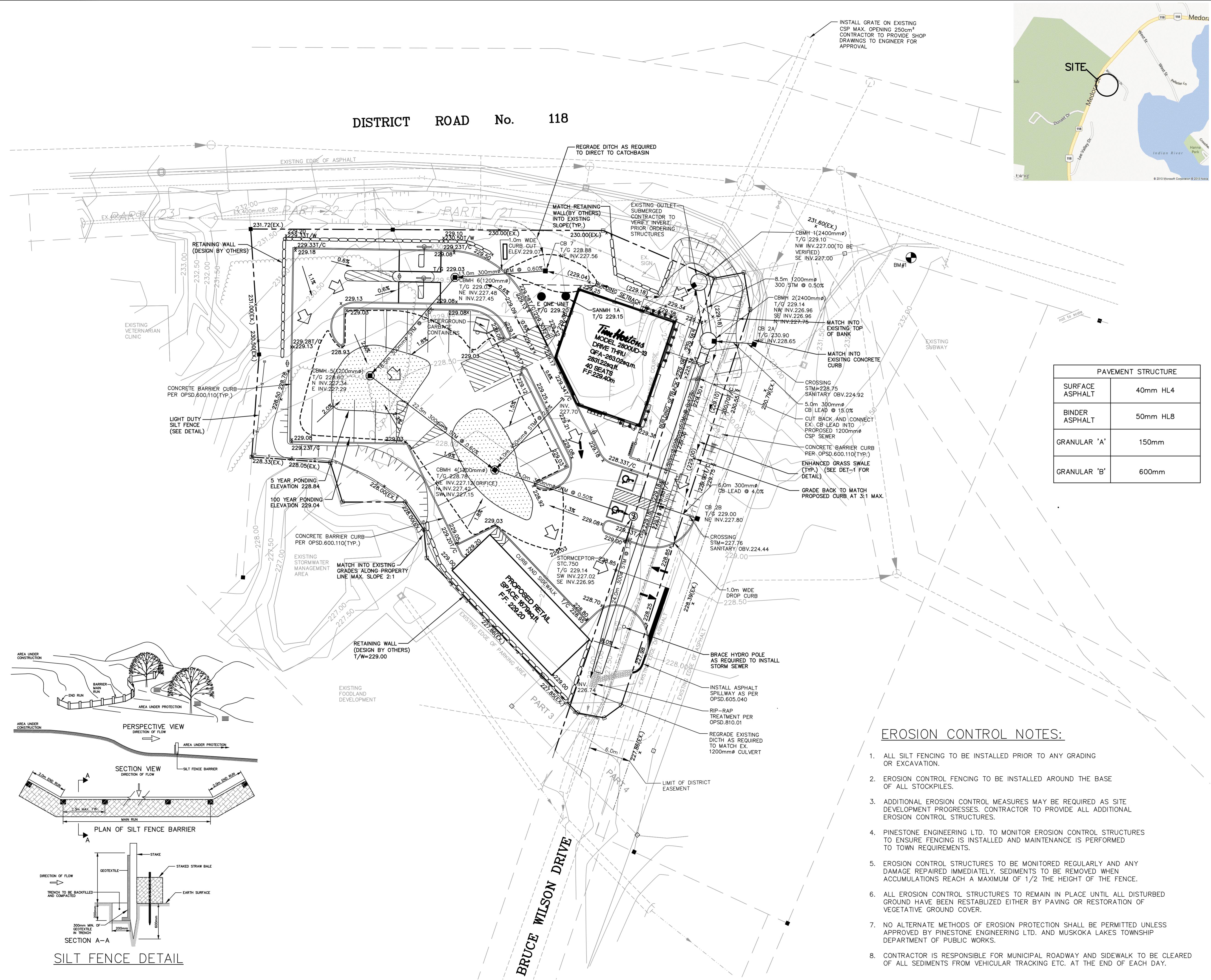
**TIM HORTON'S
PORT CARLING**

DRAWING TITLE

**STORMWATER MANAGEMENT
GRADING AND CONSTRUCTION
MITIGATION**

PROJECT NO.	DRAWING NO.	REVISION
12-11032	SWM-1	3

1103259M-3-APRIL-2015



PAVEMENT STRUCTURE

SURFACE ASPHALT	40mm HL4
BINDER ASPHALT	50mm HL8
GRANULAR 'A'	150mm
GRANULAR 'B'	600mm

EROSION CONTROL NOTES:

- ALL SILT FENCING TO BE INSTALLED PRIOR TO ANY GRADING OR EXCAVATION.
- EROSION CONTROL FENCING TO BE INSTALLED AROUND THE BASE OF ALL STOCKPILES.
- ADDITIONAL EROSION CONTROL MEASURES MAY BE REQUIRED AS SITE DEVELOPMENT PROGRESSES. CONTRACTOR TO PROVIDE ALL ADDITIONAL EROSION CONTROL STRUCTURES.
- PINESTONE ENGINEERING LTD. TO MONITOR EROSION CONTROL STRUCTURES TO ENSURE FENCING IS INSTALLED AND MAINTENANCE IS PERFORMED TO TOWN REQUIREMENTS.
- EROSION CONTROL STRUCTURES TO BE MONITORED REGULARLY AND ANY DAMAGE REPAIRED IMMEDIATELY. SEDIMENTS TO BE REMOVED WHEN ACCUMULATIONS REACH A MAXIMUM OF 1/2 THE HEIGHT OF THE FENCE.
- ALL EROSION CONTROL STRUCTURES TO REMAIN IN PLACE UNTIL ALL DISTURBED GROUND HAVE BEEN REESTABLISHED EITHER BY PAVING OR RESTORATION OF VEGETATIVE GROUND COVER.
- NO ALTERNATE METHODS OF EROSION PROTECTION SHALL BE PERMITTED UNLESS APPROVED BY PINESTONE ENGINEERING LTD. AND MUSKOKA LAKES TOWNSHIP DEPARTMENT OF PUBLIC WORKS.
- CONTRACTOR IS RESPONSIBLE FOR MUNICIPAL ROADWAY AND SIDEWALK TO BE CLEARED OF ALL SEDIMENTS FROM VEHICULAR TRACKING ETC. AT THE END OF EACH DAY.

