

# PLAN AND FIELD NOTES OF SURVEY

REQUIRE THIS PLAN TO BE DEPOSITED UNDER PART III OF THE REGISTRY ACT  
 DATE - NOVEMBER 29TH, 1968  
 D. H. GALBRAITH  
 ONTARIO LAND SURVEYOR  
 RECEIVED AND DEPOSITED AS  
**PLAN RD-**  
 INST  
 DATED -  
 REGISTRAR FOR THE REGISTRY  
 DIVISION OF THE COUNTY OF SIMCOE

## LOTS 18 AND 19 CONCESSION I

### THE ROAD ALLOWANCE BETWEEN LOTS 18 AND 19 CONCESSION I TOWNSHIP OF MATCHEDASH COUNTY OF SIMCOE

SCALE - 1" = 50 FEET  
 SURVEYOR - D. H. GALBRAITH O.L.S.  
 SURVEY COMPLETED 1968

#### SURVEYOR'S CERTIFICATE

I HEREBY CERTIFY THAT:  
 (1) THIS SURVEY AND PLAN ARE CORRECT AND IN ACCORDANCE WITH THE SURVEYS ACT AND THE REGISTRY ACT AND REGULATIONS MADE THEREUNDER.  
 (2) THE SURVEY WAS COMPLETED ON THE 25TH DAY OF NOVEMBER, 1968.

COLDWATER, ONTARIO  
 NOVEMBER 29TH, 1968.

D. H. GALBRAITH  
 ONTARIO LAND SURVEYOR

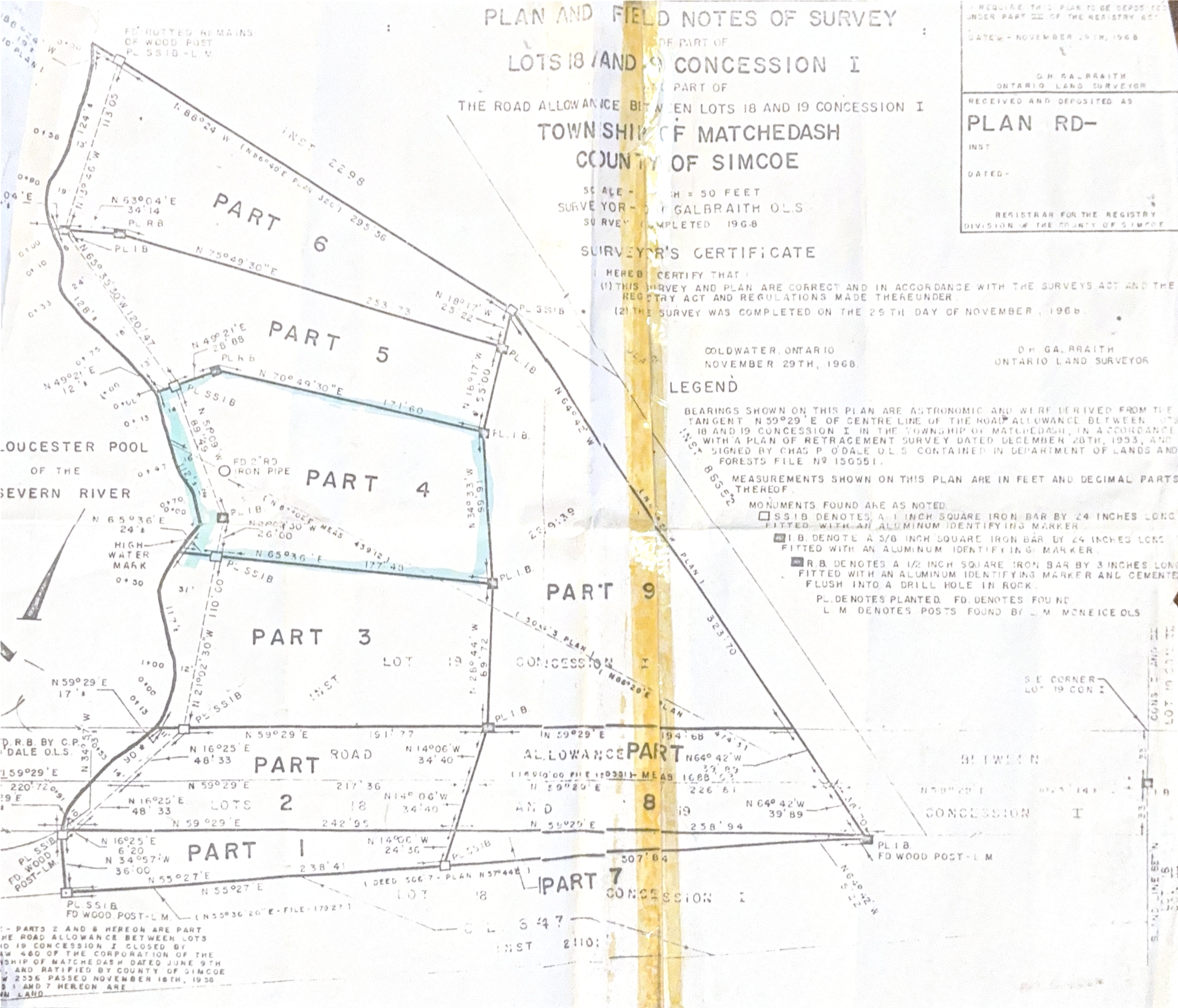
#### LEGEND

BEARINGS SHOWN ON THIS PLAN ARE ASTRONOMIC AND WERE DERIVED FROM THE TANGENT N 59° 29' E OF CENTRE LINE OF THE ROAD ALLOWANCE BETWEEN LOTS 18 AND 19 CONCESSION I IN THE TOWNSHIP OF MATCHEDASH, IN ACCORDANCE WITH A PLAN OF RETRACEMENT SURVEY DATED DECEMBER 20TH, 1953, AND A PLAN SIGNED BY CHAS P O'DALE O.L.S. CONTAINED IN DEPARTMENT OF LANDS AND FORESTS FILE NO 150551.

MEASUREMENTS SHOWN ON THIS PLAN ARE IN FEET AND DECIMAL PARTS THEREOF.

MONUMENTS FOUND ARE AS NOTED.

- SSIB DENOTES A 1 INCH SQUARE IRON BAR BY 24 INCHES LONG FITTED WITH AN ALUMINUM IDENTIFYING MARKER.
- I.B. DENOTE A 5/8 INCH SQUARE IRON BAR BY 24 INCHES LONG FITTED WITH AN ALUMINUM IDENTIFYING MARKER.
- R.B. DENOTES A 1/2 INCH SQUARE IRON BAR BY 3 INCHES LONG FITTED WITH AN ALUMINUM IDENTIFYING MARKER AND CEMENTED FLUSH INTO A DRILL HOLE IN ROCK.
- PL. DENOTES PLANTED. FD. DENOTES FOUND.
- L.M. DENOTES POSTS FOUND BY L.M. MCNEICE O.L.S.



PARTS 2 AND 8 HEREON ARE PART OF THE ROAD ALLOWANCE BETWEEN LOTS 18 AND 19 CONCESSION I CLOSED BY LAW 460 OF THE CORPORATION OF THE TOWNSHIP OF MATCHEDASH DATED JUNE 9TH, 1953, AND RATIFIED BY COUNTY OF SIMCOE RESOLUTION 2556 PASSED NOVEMBER 18TH, 1958. PARTS 1 AND 7 HEREON ARE IN LAND