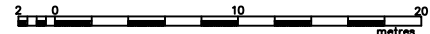


NOTE
 LITTLE LAKE WAS CREATED BY DAMMING AND FLOODING THE SEVERN RIVER IN EARLY 1920.
 TRENT SEVERN WATERWAY LOWERS THE ELEVATION OF THE WATER OVER EACH WINTER SEASON.
 THE LAND/WATER BOUNDARY SHOWN HEREON IS THE REGULATED WATER'S EDGE AS SHOWN ON PLAN BR-176.
 THE LIMIT OF PART 19, PLAN BR-176 SHOWN HEREON CLOSELY MATCHES THAT SHOWN ON BR-176 AND FOLLOWS THE INTENT WITH RESPECT TO THE BOUNDARY.

PLAN OF SURVEY OF
 PART OF LOT 23
 CONCESSION 4
 GEOGRAPHIC TOWNSHIP OF BAXTER
 TOWNSHIP OF GEORGIAN BAY
 DISTRICT MUNICIPALITY OF MUSKOKA

SCALE 1 : 200

 RUDY MAK SURVEYING LTD.

BEARING NOTE
 BEARINGS ARE UTM GRID, DERIVED FROM OBSERVED REFERENCE POINTS, BY REAL TIME NETWORK (RTN) OBSERVATIONS, UTM ZONE 17, NAD83 (CSRS) (2010 EPOCH).

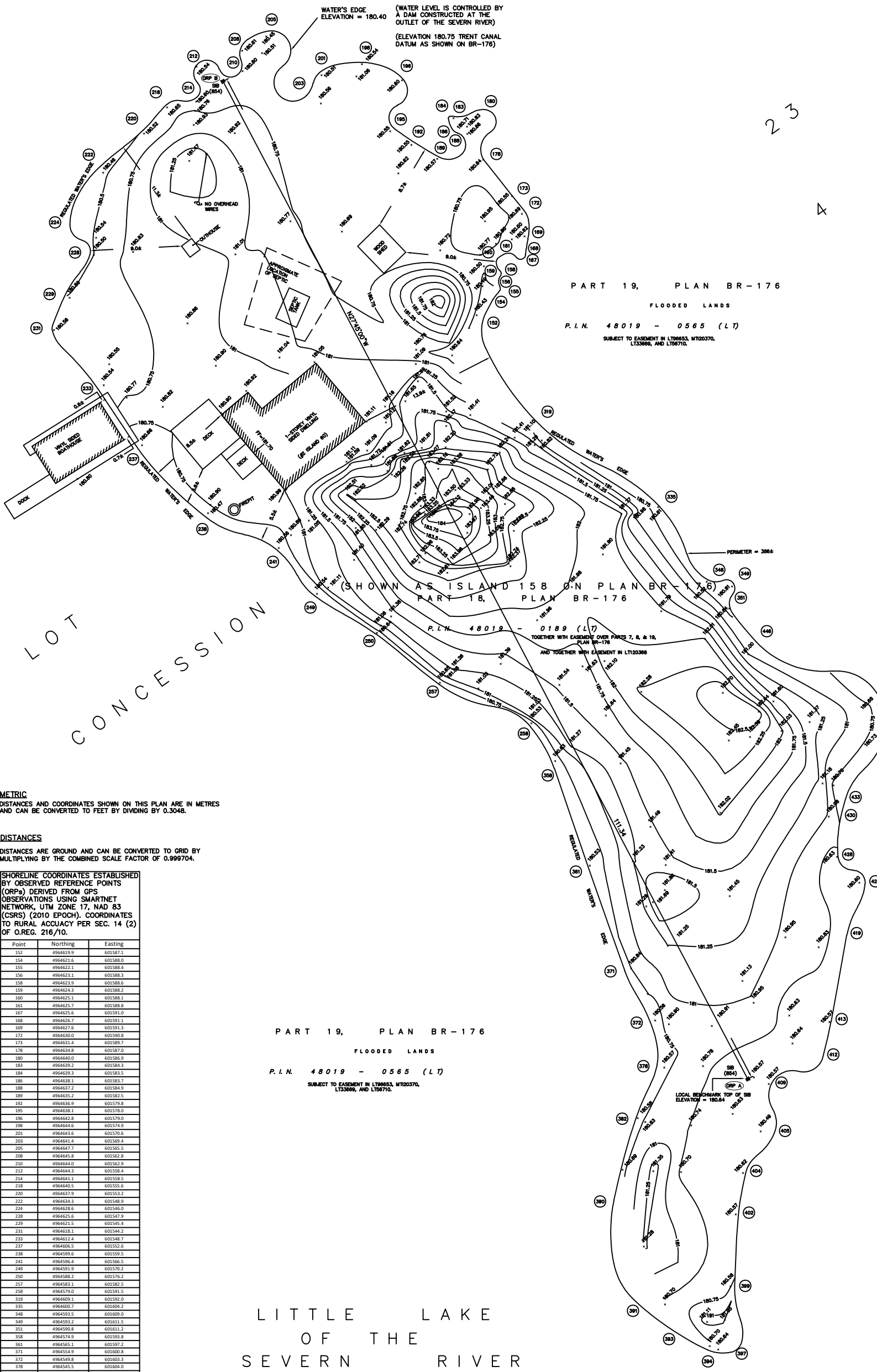
ELEVATION NOTE:
 ELEVATIONS ARE GEODETIC IN ORIGIN AND WERE DERIVED FROM OBSERVED REFERENCE POINTS (ORP) USING THE LEICA SMARTNET NETWORK (2010 EPOCH) AND ARE REFERRED TO THE CGVD28:1978 (HTV2.0) DATUM.

BENCHMARK
 LOCAL BENCHMARK IS THE TOP OF THE SIB NEAR THE SOUTHERN AREA OF THE ISLAND, HAVING AN ELEVATION OF 180.64.

LEGEND

- DENOTES FOUND SURVEY MONUMENT
- SIB DENOTES STANDARD IRON BAR
- (854) DENOTES D.H. GALBRAITH, O.L.S.
- (P1) DENOTES PLAN BR-176
- DENOTES UTILITY POLE
- DENOTES STABILIZING CABLE AND GROUND ANCHOR
- DENOTES SHORELINE COORDINATE POINT

NOTES:
 THIS PLAN DELINEATES THE FEATURES AS SHOWN AND VISIBLE, GIVEN THE SITE CONDITIONS. CONSTRUCTION ACTIVITY, FROZEN GROUND, SNOW COVER, ETC. MAY HAVE HIDDEN FEATURES OTHERWISE VISIBLE. THE LOCATION OF UNDERGROUND SERVICES, IF SHOWN, WAS DERIVED FROM PLANS OBTAINED FROM OTHER AGENCIES. RUDY MAK SURVEYING CANNOT BE HELD RESPONSIBLE FOR THE LOCATION AND ACCURACY OF UNDERGROUND SERVICES. THE LOCATION OF ALL SERVICES MUST BE VERIFIED ON SITE. ONLY A SIGNED AND SEALED PAPER COPY OF THIS SURVEY IS TO BE CONSIDERED "ORIGINAL" AND MAY HAVE BEEN ALTERED BY OTHERS.



METRIC
 DISTANCES AND COORDINATES SHOWN ON THIS PLAN ARE IN METRES AND CAN BE CONVERTED TO FEET BY DIVIDING BY 0.3048.

DISTANCES
 DISTANCES ARE GROUND AND CAN BE CONVERTED TO GRID BY MULTIPLYING BY THE COMBINED SCALE FACTOR OF 0.999704.

SHORELINE COORDINATES ESTABLISHED BY OBSERVED REFERENCE POINTS (ORPs) DERIVED FROM GPS OBSERVATIONS USING SMARTNET NETWORK, UTM ZONE 17, NAD 83 (CSRS) (2010 EPOCH). COORDINATES TO RURAL ACCURACY PER SEC. 14 (2) OF O.REG. 216/10.

Point	Northing	Easting
152	4964619.9	601587.1
154	4964621.6	601588.0
155	4964622.1	601588.4
156	4964623.1	601588.3
158	4964623.9	601588.6
159	4964624.3	601588.2
160	4964625.1	601588.1
161	4964625.7	601588.8
167	4964625.6	601589.0
168	4964626.7	601589.1
169	4964627.6	601591.3
172	4964630.0	601590.8
173	4964631.4	601589.7
178	4964634.8	601587.0
180	4964640.0	601586.9
183	4964639.2	601584.3
184	4964639.3	601583.5
186	4964638.1	601583.7
188	4964637.2	601584.9
189	4964638.2	601582.8
192	4964638.9	601579.8
195	4964638.1	601578.0
196	4964642.8	601579.0
198	4964644.6	601574.9
203	4964643.6	601570.6
203	4964644.4	601569.4
205	4964647.7	601565.5
208	4964645.8	601562.8
210	4964644.0	601562.9
212	4964644.3	601558.4
214	4964641.1	601558.5
218	4964640.5	601555.8
220	4964637.9	601553.2
222	4964634.3	601548.9
224	4964628.6	601546.0
228	4964623.6	601547.9
229	4964621.5	601545.4
231	4964618.1	601544.2
233	4964612.4	601548.7
237	4964606.5	601552.6
238	4964599.6	601550.9
242	4964596.4	601566.5
249	4964591.9	601570.2
250	4964588.2	601576.2
257	4964583.1	601582.5
258	4964579.0	601591.5
319	4964629.1	601592.0
335	4964600.7	601604.2
348	4964593.5	601609.0
349	4964591.2	601611.5
351	4964590.8	601611.2
358	4964574.9	601593.8
363	4964565.1	601597.2
371	4964554.9	601600.8
372	4964549.8	601603.3
378	4964545.5	601604.0
382	4964540.3	601601.9
390	4964532.2	601599.7
391	4964522.4	601601.7
393	4964519.6	601605.1
394	4964517.4	601609.0
397	4964518.2	601612.3
399	4964523.8	601611.6
402	4964530.8	601612.0
404	4964534.9	601612.7
405	4964538.9	601615.6
409	4964541.6	601615.2
412	4964544.4	601620.4
413	4964549.9	601621.2
419	4964558.4	601622.7
425	4964561.5	601624.5
428	4964566.2	601621.8
430	4964570.9	601621.1
433	4964571.8	601622.6
435	4964577.9	601626.4
436	4964581.3	601626.1
446	4964587.5	601613.7

OBSERVED REFERENCE POINTS (ORPs) DERIVED FROM GPS OBSERVATIONS USING THE LEICA SMARTNET NETWORK, UTM ZONE 17, NAD 83 (CSRS) (2010 EPOCH). COORDINATES TO RURAL ACCURACY PER SEC. 14 (2) OF O.REG. 216/10.

POINT ID	NORTHING	EASTING
ORP A	4964544.20	601612.93
ORP B	4964642.71	601561.10

COORDINATES CANNOT, IN THEMSELVES, BE USED TO RE-ESTABLISH CORNERS OR BOUNDARIES SHOWN ON THE PLAN.

LITTLE LAKE
 OF THE
 SEVERN RIVER

PART 19, PLAN BR-176
 FLOODED LANDS
 P.I.N. 48019 - 0565 (LT)
 SUBJECT TO EASEMENT IN LT09853, MT20370,
 LT33669, AND LT096710.


23

X

SURVEYOR'S CERTIFICATE

I CERTIFY THAT:
 1) THIS SURVEY AND PLAN ARE CORRECT AND IN ACCORDANCE WITH THE SURVEYS ACT, THE SURVEYORS ACT AND THE REGULATIONS MADE UNDER THEM.
 2) THE SURVEY WAS COMPLETED ON THE 27TH DAY OF APRIL, 2021.

MAY 11, 2021
 DATE RUDY MAK
 ONTARIO LAND SURVEYOR

ASSOCIATION OF ONTARIO
 LAND SURVEYORS
 PLAN SUBMISSION FORM
 2 1 6 6 3 8 3

 THIS PLAN IS NOT VALID UNLESS IT IS AN EMBOSSED ORIGINAL COPY ISSUED BY THE SURVEYOR
 in accordance with Regulation 1028, Section 28(3).

REVISION	BY	DATE
FIRST ISSUE	GM	29/04/2021

T:\BLOCK-CAD\BORDER-RUDYMAK\Rudy Mak 45132 web logo.jpg

89 BIG BAY POINT ROAD
 BARRIE, ONTARIO L4N 8M5 (705) 722-3845
 E-MAIL MAIL@MAKSURVEYING.COM

DRAWN BY: GM CHECK BY: RAP FILE No. 14590