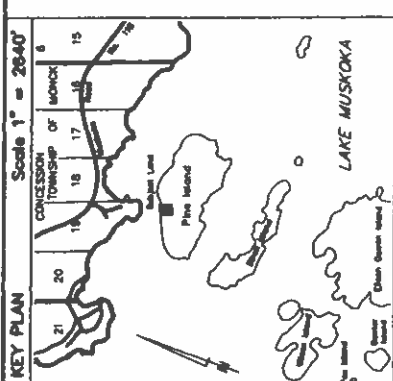


2 PROPERTIES SOLD TOGETHER  
 VACANT LOT  
 COTTAGE PROPERTY



From	To	Distance	Remarks
1	2	27	27
2	3	46	46
3	4	48	48
4	5	38	38
5	6	37	37
6	7	34	34
7	8	31	31
8	9	30	30
9	10	28	28
10	11	24	24
11	12	18	18
12	13	16	16
13	14	22	22
14	15	25	25
15	16	20	20
16	17	27	27
17	18	31	31
18	19	28	28
19	20	27	27
20	21	47	47
21	22	98	98
22	23	38	38
23	24	72	72
24	25	33	33
25	26	101	101
26	27	114	114
27	28	102	102
28	29	114	114
29	30	123	123
30	31	128	128
31	32	207	207
32	33	135	135
33	34	278	278
34	35	145	145
35	36	274	274
36	37	275	275
37	38	284	284
38	39	250	250
39	40	248	248
40	41	244	244
41	42	238	238
42	43	238	238
43	44	155	155

PLAN OF SURVEY OF  
 ALL OF LOT 16,  
 REGISTERED PLAN No. 20  
 GEOGRAPHIC TOWNSHIP OF MONCK  
 TOWNSHIP OF MUSKOKA LAKES  
 DISTRICT MUNICIPALITY OF MUSKOKA  
 COOTE, HILEY, JENNETT LIMITED



DISTANCES SHOWN ON THIS PLAN ARE IN FEET AND CAN BE CONVERTED TO METRES BY MULTIPLYING BY 0.3048.

LEGEND

- MONUMENT PLANTED
- MONUMENT FOUND
- SHORT STANDARD IRON BAR
- IRON ROD
- IRON PIPE
- IRON ROD WITH PLUG
- IRON PIPE WITH PLUG
- FITZMAURICE & BRYER O.L.S.
- REGISTERED PLAN No. 20

SURVEYOR'S CERTIFICATE

I CERTIFY THAT:

- 1 - THIS SURVEY AND PLAN ARE CORRECT AND IN ACCORDANCE WITH THE SURVEY ACT, THE SURVEYORS ACT AND THE REGULATIONS MADE UNDER THEM.
- 2 - THE SURVEY WAS COMPLETED ON THE 20th DAY OF FEBRUARY, 2007.

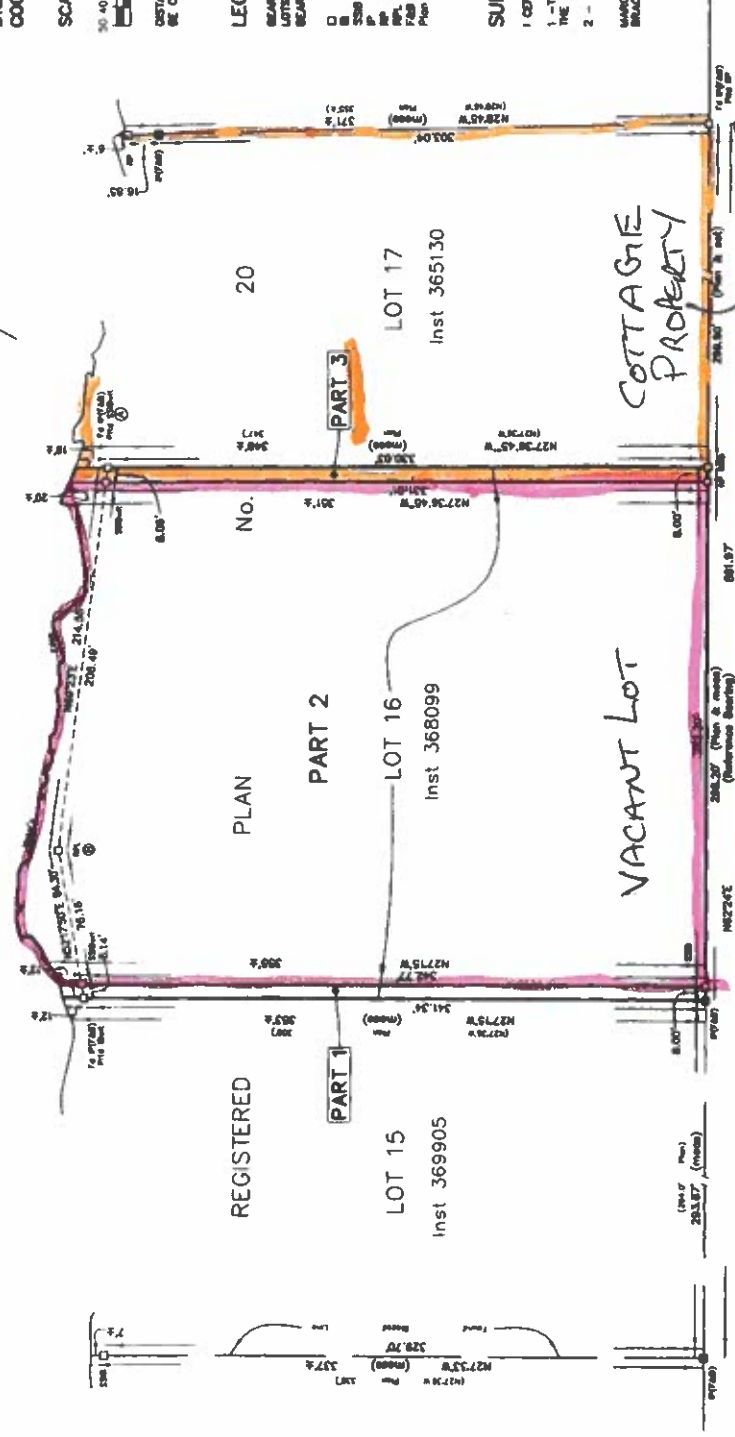
MARCH 15, 2007  
 BRAMPTON, ONTARIO

*John W. Hiley*  
 JOHN W. HILEY  
 ONTARIO LAND SURVEYOR

COOTE, HILEY, JENNETT LIMITED  
 ONTARIO LAND SURVEYORS

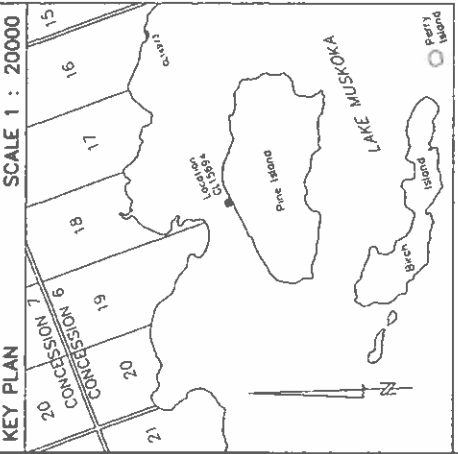
www.hileysurveyors.com e-mail: hiley@hileysurveyors.com  
 8 Dundas Street, Unit 3 Phone: (705) 845-4811  
 Brampton, ON Fax: (800) 464-1443  
 P.O. Box 248 Tel: (705) 845-1945  
 Form by JEC Rev. 2/10 Page 28/28

LAKE MUSKOKA



PINE ISLAND  
 Inst 312350

COTTAGE - BOAT HOUSE LAKE BED



**SCHEDULE**

Part	Lot/Block	Car/Plan	Acres (feet)	Hectares (metres)	Plat/Plan (metres)
1	Part of the Bed of Lake Muskoka in front of Pine Island		0.032 (11023)	0.0102 (10312)	
2	Lot 17, Registered Plan No. 20		0.082 (22204)	0.0332 (12723)	
Total Area			0.114 (31227)	0.0434 (13035)	

Geographic Township of Monck

PLAN 35R-22997

RECEIVED AND DEPOSITED

DATE: January 15th 2010

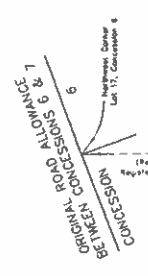
*John W. Hiley*  
DEPUTY LAND REGISTRAR FOR THE LAND TITLES DIVISION OF MUSKOKA

I REQUIRE THIS PLAN TO BE DEPOSITED UNDER THE LAND TITLES ACT.

DATE: AUGUST 12, 2009

*John W. Hiley*  
JOHN W. HILEY O.L.S.

PERMISSION TO DEPOSIT THIS PLAN OF SURVEY OF CROWN LAND WAS GIVEN BY THE SURVEYOR GENERAL OF ONTARIO ON THE 11th DAY OF JANUARY, 2010



PLAN OF SURVEY OF LOCATION CL 15694 BEING PART OF THE BED OF LAKE MUSKOKA IN FRONT OF PINE ISLAND NOW IN FRONT OF LOT 17, REGISTERED PLAN NO. 20 GEOGRAPHIC TOWNSHIP OF MONCK TOWNSHIP OF MUSKOKA LAKES DISTRICT MUNICIPALITY OF MUSKOKA COOTE, HILEY, JEMMETT LIMITED

SCALE 1 : 150

5 4 3 2 1 0 5 metres

DISTANCES SHOWN ON THIS PLAN ARE IN METRES AND CAN BE CONVERTED TO FEET BY DIVIDING BY 0.3048.

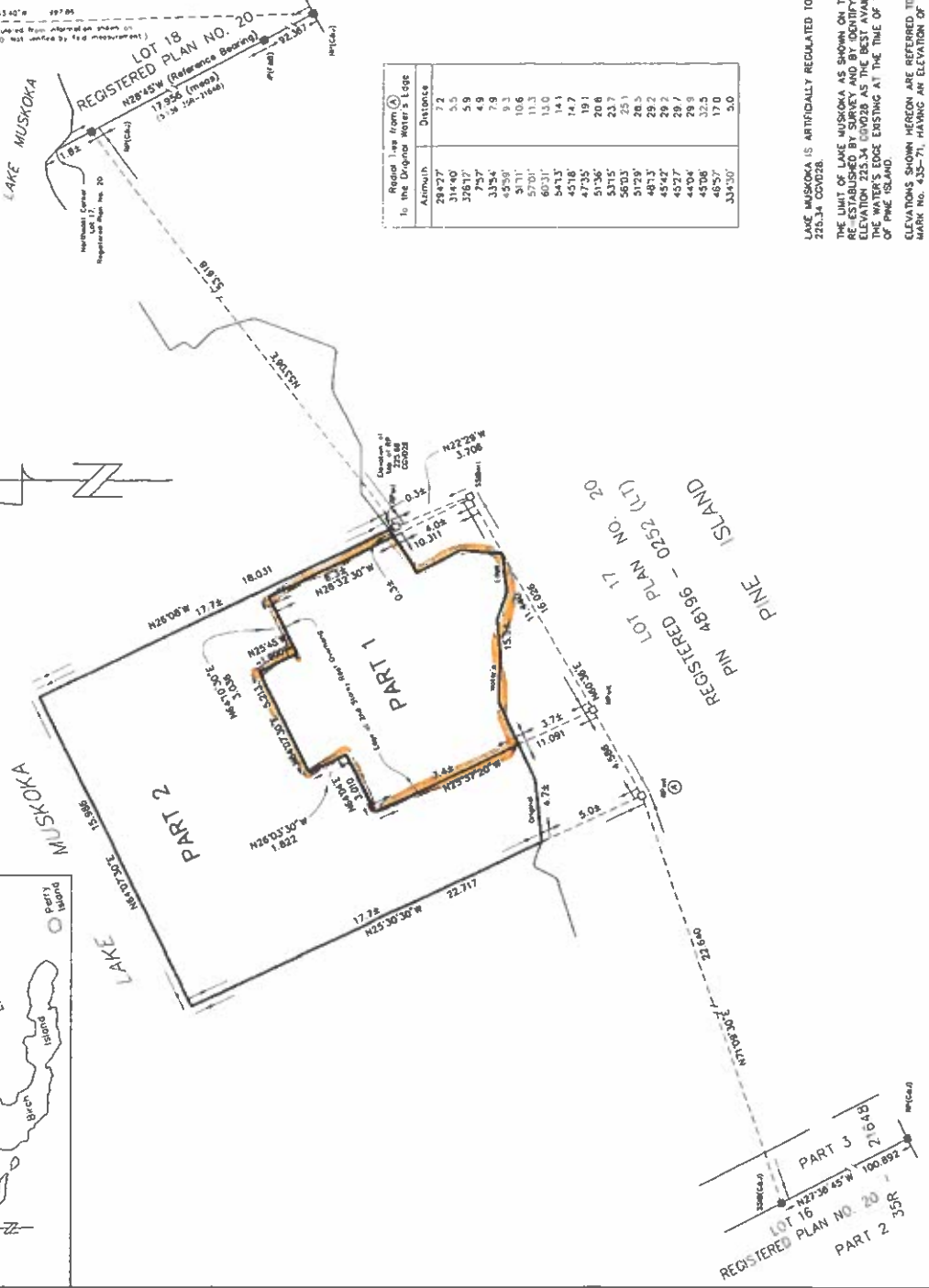
BEARINGS ARE ASTRONOMIC AND ARE REFERRED TO THE EASTERN LIMIT OF LOT 17, REGISTERED PLAN NO. 20 AS SHOWN ON PLAN 35R-21648 HAVING A BEARING OF N28°5'W.

LEGEND

- MONUMENT PLANTED
- SHORT STANDARD IRON BAR
- IRON PIPE
- COOTE, HILEY, JEMMETT LIMITED
- FITZMAURICE & BOTEY O.L.S.
- CANADIAN GEODETIC VERTICAL DATUM 1928
- MINISTRY OF TRANSPORTATION ONTARIO
- WITNESS

Altimuth	Distance
284°27'	7.2
314°40'	5.5
326°17'	5.9
75°37'	4.9
335°4'	7.9
49°31'	10.6
57°01'	11.3
60°31'	12.0
54°13'	14.1
47°35'	14.7
51°36'	19.1
53°15'	20.8
56°03'	23.7
59°59'	25.1
48°13'	29.2
45°42'	29.2
45°27'	29.7
44°04'	29.9
45°06'	32.5
46°57'	17.0
334°30'	3.0

Real Top from (A) to the Original Water's Edge



**SURVEYOR'S CERTIFICATE**

I CERTIFY THAT

- THIS SURVEY AND PLAN ARE CORRECT AND IN ACCORDANCE WITH THE SURVEY ACT AND THE LAND TITLES ACT AND THE REGULATIONS MADE UNDER THEM.
- THE SURVEY WAS COMPLETED ON THE 15th DAY OF APRIL, 2009.
- THIS PLAN AND FIELD NOTES WAS PREPARED FROM AN ACTUAL SURVEY PERFORMED UNDER MY PERSONAL SUPERVISION AND I WAS PRESENT ON THE SITE DURING THE PROGRESS OF THIS SURVEY.

AUGUST 12, 2009  
BRUCEBRIDGE, ONTARIO

*John W. Hiley*  
JOHN W. HILEY  
ONTARIO LAND SURVEYOR

O.L.S. File 22263 (14)

LAKE MUSKOKA IS ARTIFICIALLY REGULATED TO AN ELEVATION OF 225.34 COVD28.

THE LIMIT OF LAKE MUSKOKA AS SHOWN ON THIS PLAN HAS BEEN RE-ESTABLISHED BY SURVEY AND BY IDENTIFYING THE CONTOUR OF ELEVATION 225.34 COVD28 AS THE BEST AVAILABLE EVIDENCE OF THE WATER'S EDGE EXISTING AT THE TIME OF THE ORIGINAL SURVEY OF PINE ISLAND.

ELEVATIONS SHOWN HEREON ARE REFERRED TO MTD PRECISE BENCH MARK NO. 435-71, HAVING AN ELEVATION OF 226.87 COVD28.

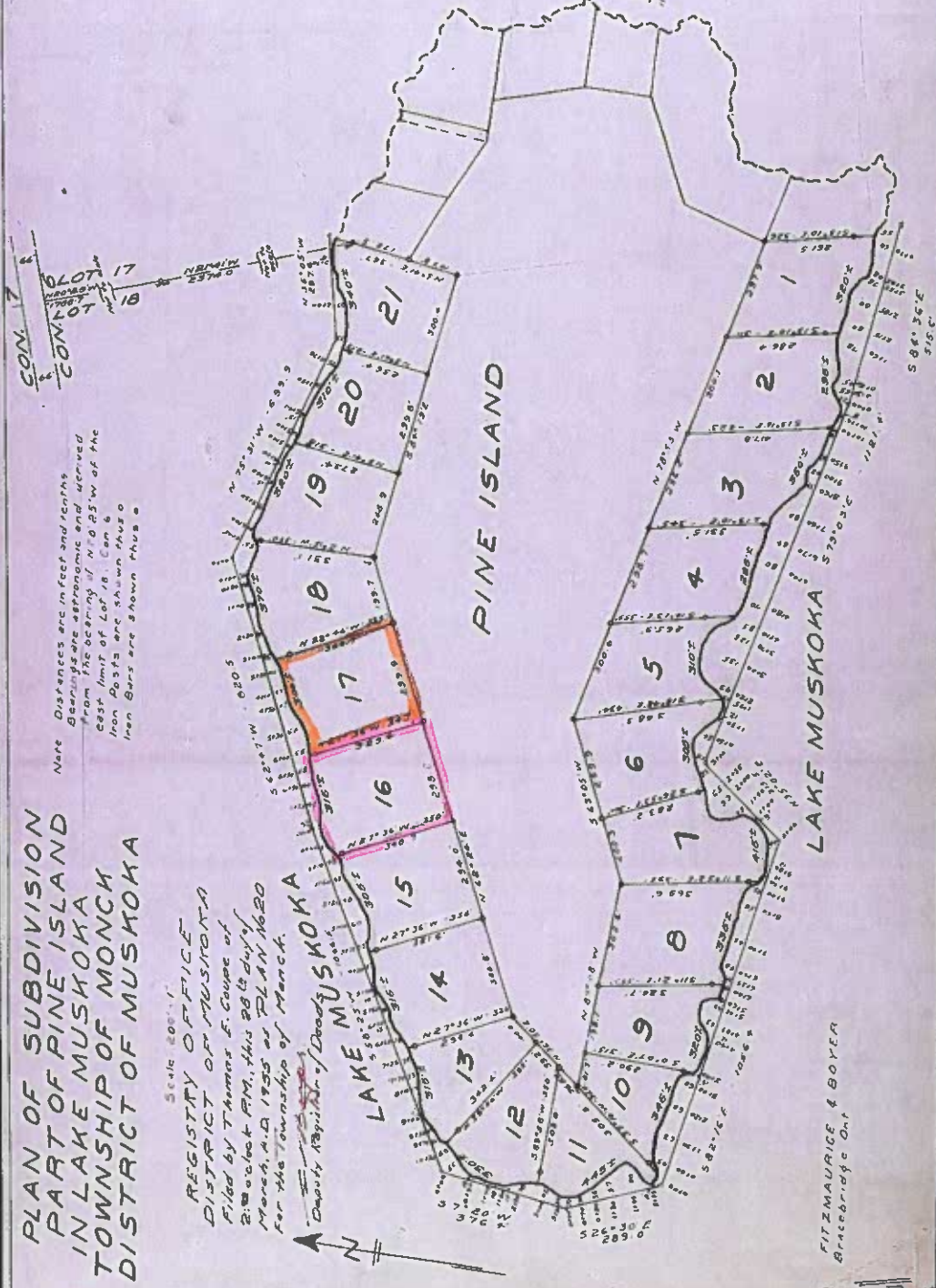
ORIGINAL SURVEY

VACANT LOT  
COTTAGE PROPERTY

PLAN OF SUBDIVISION  
PART OF PINE ISLAND  
IN LAKE MUSKOKA  
TOWNSHIP OF MONCH  
DISTRICT OF MUSKOKA

Scale 200:1  
REGISTRY OFFICE  
DISTRICT OF MUSKOKA  
Filed by Thomas F. Coupe of  
2:30:00 PM, this 28th day of  
March, A.D. 1955 as PLAN No 20  
for the Township of Monch.

Note  
Distances are in feet and tenths  
Bearings are astronomic and derived  
from the bearing of N 70° 03' W of the  
east limit of Lot 16. Com 6  
Iron Posts are shown thus o  
Iron Bars are shown thus —



SUBDIVISIONS CERTIFICATE

I, John A. Hiley, an Ontario Land Surveyor certify that, I was present and did personally superintend the survey represented by this plan.

This plan accurately shows the manner in which the lands in respect hereof have been surveyed and subdivided by me, together with the location of the monument and a monument is placed at the angle of each street intersection shown on the plan, as shown on the plan the position and form of each of the monuments.

The monuments conform in all respects to requirements of Section 12 of the Survey Act.

The survey was made by me between the 1st day of April, 1954, and the 31st day of April, 1954, and

The survey has been accurately made in accordance with the provisions of the Survey Act and the Registry Act relating thereto.

Dated at Bracebridge the 27th day of H. 3. 1955

ONTARIO LAND SURVEYOR  
FILE 2840

OWNERS CERTIFICATE

Lots 1 to 21 inclusive within the boundaries edged in red have been laid out in accordance with the instructions of the Ontario Land Surveyor.

WITNESSES

OWNERS

AFFIDAVIT OF WITNESS

I, [Name], being one of the owners of the lands shown in the plan of subdivision hereon, do hereby certify that I was personally present and did see this plan duly signed by the Ontario Land Surveyor.

That I know the contents of the plan and the instructions in the plan and the instructions in the plan and the instructions in the plan.

Witness my hand and seal this 27th day of March, 1955.

Approved under Section 26 of THE PLANNING ACT  
This 27th day of March, 1955  
WTS ON  
MINISTER OF PLANNING & DEVELOPMENT